

American
Suessen



ACO
Parts
Catalogue

American **Suessen** Corporation

www.americansuessen.com

ASC offers many more parts than those shown in this catalogue. Please visit our webpage and look at our complete parts list. Use CTRL+F to search our inventory by ASC part number, description, or other manufacturers' part numbers.

Telephone: 704/588-2365
Fax: 704/588-3945
E-mail: orders@americansuessen.com

Click on the logo of one of the four companies we represent to get in-depth technical information and the latest news.

For assistance, please call your Sales Representative or our office.

ACO SE-20

| | | | |
|---|---|--|---|
|  |  |  |  |
| <p>2894303 Yarn Guide Lever 161003191</p> | <p>2894292 Locking Lever 161000662</p> | <p>2894293 Locking Lever 161000666</p> | <p>2894317 Cpl. Pneumatic Cylinder 12x80 161006111</p> |
|  |  |  |  |
| <p>2893913 Opener Arm 161007555</p> | <p>2893960 Opener Arm Position 37 161004227</p> | <p>2893801 Pinion Shaft 161004899</p> | <p>2894195 Plastic Scrapper Blade 161008378</p> |
|  |  |  |  |
| <p>2894299 Latch- Left 161002688</p> | <p>2894300 Latch- Right 161002689</p> | <p>2893804 Toothed Wheel 161004898</p> | <p>2880965 O-Ring 16 x 7 836460254</p> |
|  |  |  |  |
| <p>2894291 Worm Bolt 161000071</p> | <p>2894304 Bracket 161003198</p> | <p>2894305 Torsion Spring 161003351</p> | <p>2893803 Opening Assembly Housing 161010983</p> |

ACO SE-20

| | | | |
|---|---|--|---|
|  |  |  |  |
| <p>2894307 Snap Spring 161004176</p> | <p>2894164 Cylinder Cover Cpl. 161009380 161007584</p> | <p>2894309 Spring Strap 161004961</p> | <p>2894310 Cpl. Cleaner 161005123</p> |
|  |  |  |  |
| <p>2894311 Holding Plate LH 161005124</p> | <p>2894312 Holding Plate RH 161005125</p> | <p>2894478 Flap ACO 161001522</p> | <p>2894337 Cleaner Cpl. 161012648</p> |
|  |  |  |  |
| <p>2893961 Sensor B337 161660106</p> | <p>2894316 Torsion Spring 161005836</p> | <p>2894294 Toothed Segment 161000682</p> | <p>2820298 Air Filter 161006321</p> |
|  |  |  |  |
| <p>2894318 Yarn Guide Roller 161006341</p> | <p>2894320 Yarn Guide Roller 161006705</p> | <p>2894319 Pinion Shaft T=27 161006353</p> | <p>2820507 Ceramic Pin 161001918 117034772</p> |

ACO SE-20

| | | | |
|---|---|--|---|
|  |  |  |  |
| <p>2894321 Drive Shaft LH (770 mm length) 161006886</p> | <p>2894322 Drive Shaft RH 161006887</p> | <p>2880997 Shield 161009158 161006342</p> | <p>2882044 Hook 161008012</p> |
|  |  |  |  |
| <p>2885000 Suction Nozzle Belt ACO 161009759</p> | <p>2884194 Bridge Handle 161006670 139003840</p> | <p>2893780 Cradle Shock Absorber cpl. w/magnet 161010118</p> | <p>2893788 Drive Shaft (1288 mm length) 161000400</p> |
|  |  |  |  |
| <p>2893791 Tube Protector RH 161000238</p> | <p>2893792 Tube Protector LH 161000223</p> | <p>2893793 Pressure Spring (435 mm length) 161003029</p> | <p>2893794 Roller (25 mm O.D. x 27.5 mm) 161004553</p> |
|  |  |  |  |
| <p>2893795 Bearing Bolt 161004552</p> | <p>2893796 Bearing Bolt 161010660</p> | <p>2893797 Cylinder Bracket 161010804</p> | <p>2894301 Toothed Belt 60-S2M-320 161002878</p> |

ACO SE-20

| | | | |
|---|---|--|---|
|  |  |  |  |
| <p>2893799 Spur-Toothed Conic Wheel 161001293</p> | <p>2893800 Spur-Toothed Conic Wheel 161001292</p> | <p>2893802 Housing Cover 161004892</p> | <p>2894170 Roller Holder 161005478</p> |
|  |  |  |  |
| <p>2894409 Pneumatic Cylinder Cpl. 20x185 161007622</p> | <p>2893805 Sheet Plate 161003741</p> | <p>2893806 Spacer Bolt 161003294</p> | <p>2893807 Supporting Plate 161004830</p> |
|  |  |  |  |
| <p>2894104 Cylinder D12-H14 161013097</p> | <p>2894183 Fan Wheel D=488 161001716</p> | <p>2894450 Covering Plate Cpl. 161009564 161004331</p> | <p>2893815 Slide 161011048</p> |
|  |  |  |  |
| <p>2893816 Way Valve 3/2 161008247</p> | <p>2894296 Intermediate Piece 161001287</p> | <p>2893818 Bearing Shaft 161006883</p> | <p>2894169 Protecting Cap 161000903</p> |

ACO SE-20

| | | | |
|---|---|---|---|
| <p>2894101 Adapter HO (w/magnet) 161000058</p> | <p>2894102 Adapter RH 161000063</p> | <p>2893811 Adapter Plate Cpl. LH 161000141</p> | <p>2893812 Adapter Plate Cpl. RH 161005229</p> |
| <p>2894330-2 Intake Motor without tip 161008040 161012260</p> | <p>2893828 Pre-Condenser White 161001101</p> | <p>2894313 Leaf Spring 161005601</p> | <p>2894306 Holder 161003956</p> |
| <p>2894447 Spinning Position Cover ACO 161007287 / 161006693</p> | <p>2894451 Flanges Pulley 161006872</p> | <p>2894494 Cover (Black) ACO 161008859</p> | <p>2894448 Cpl. Hood Insert and Cover Yellow 161000777</p> |
| <p>2894308 Protective Cover Black 161004646</p> | <p>2893826 Insert (Yellow) 161000775</p> | <p>2893827 Cover 161000774</p> | <p>2894160 Hood 161000776</p> |

ACO SE-20

| | | | |
|--|---|--|---|
|  |  |  |  |
| <p>2894188 Bolt 161001635</p> | <p>2894411 Hall Sensor B332 161660101</p> | <p>2894298 Toothed Belt 60-S3M-384 161002158</p> | <p>2894218 Cradle Cylinder 161007419 / 161000133 161007236 / 161011515</p> |
|  |  |  | <p>2894234 L-Plug Connection 8mm-4mm 166003834</p> |
| <p>2894219 Take-up Cylinder 161007415 / 161007230 161006976 / 161004750</p> | <p>2894323 Cap 161007295</p> | <p>2894220 Cylinder 161007414 / 161007229 161006819 / 161004766 161003263 / 161001933</p> | |
|  |  |  |  |
| <p>2894325 Leaf Spring 161007457</p> | <p>2894326 Jointed Head 161007468</p> | <p>2894328 Bridge Handle 161007595</p> | <p>2894297 Clamping Bolt 16100128</p> |
|  |  |  |  |
| <p>2894331 Deflection Pulley 161008256</p> | <p>2894332 Roller Holder 161008294</p> | <p>2894333 Wire Sensor 161008777</p> | <p>2894334 Coupling Plate 161009498</p> |

ACO SE-20

| | | | |
|--|---|---|--|
|  <p>2894335 Spinning Position Cover 161009602</p> |  <p>2894336 Seal Only 161012132 139005493</p> |  <p>2894314 Guide Plate 161005680</p> |  <p>2894338 Cradle Shock Absorber w/Magnet cpl. 161012699</p> |
|  <p>2894339 Valve 24...36V 29.3...44mA 100% ED 161013659</p> |  <p>2894359 Hall-Sensor B4 18 161660123</p> |  <p>2894363 Splice Pipe 161011498</p> |  <p>2894387 Toothed Belt 100 S2M 500 161012808 161001092</p> |
|  <p>2894391 Insert Black 161008860</p> |  <p>2894395 Flat Head Screw M8x16 161003925</p> |  <p>2894400 Spring 161000670</p> |  <p>2894401 Angle Plate Pos. 69 161002071</p> |
|  <p>2894402 Sustainer 161008168 161008735</p> |  <p>2894405 Package Carrier 161008738</p> |  <p>2894406 Spacer Plate 161007509</p> |  <p>2894302 Torsion Spring 161002940</p> |

ACO SE-20

| | | | |
|--|--|--|--|
|  <p>2880964 Plug 161006214</p> |  <p>2894259 Leaf Spring 139005275</p> |  <p>2893817 Yarn Preparation 161008554</p> |  <p>2894324 Bearing 16100731</p> |
|  <p>2894138 Pneumatic Tube Red 4x300mm 161340613</p> |  <p>2894136 Pneumatic Tube Green 4x400mm 161340615 3</p> |  <p>2894135 Pneumatic Tube Yellow 4x500mm 161340614</p> |  <p>2894137 Pneumatic Tube Black 4x650mm 161340616</p> |
|  <p>2894327 Draw-off Tube 161007576</p> |  <p>2894501 Ring Profile Cover (plastic) 161007092 / 161003757</p> |  <p>2885019 Yarn Positioner 161013128 / 161012005 161007423</p> | <p>123459 Coming Soon</p> |
| <p>123459 Coming Soon</p> | <p>123459 Coming Soon</p> | <p>123459 Coming Soon</p> | <p>123459 Coming Soon</p> |

ACO SE-20

| 9 Digit Nr. | Description | Other Numbers |
|-------------|-------------------------------|---------------|
| 161-000-058 | Adapter Plate lh. cyl. 42x54 | |
| 161-000-063 | Adapter Plate rh. cyl. 54 | |
| 161-000-071 | Worm bolt | |
| 161-000-097 | Distance Plate 1,0mm | |
| 161-000-141 | Cpl. Adapter Plate lh. | |
| 161-000-223 | Tube Protector LH | |
| 161-000-238 | Tube Protector RH | |
| 161-000-242 | Scissors Blade Steel | |
| 161-000-323 | Guide metal sheet | |
| 161-000-393 | Distance sleeve | |
| 161-000-394 | Distance sleeve | |
| 161-000-400 | Drive Shaft | |
| 161-000-401 | Spacer Tube | |
| 161-000-449 | V-Belt Pulley Z=60 | |
| 161-000-535 | V-Belt Pulley Z=28 | |
| 161-000-563 | Holding plate | |
| 161-000-570 | V-belt pulley Z=60 | |
| 161-000-596 | Spacer bushing | |
| 161-000-597 | Spacer bushing | |
| 161-000-662 | Locking Lever | |
| 161-000-666 | Locking Lever | |
| 161-000-669 | Slide bushing | |
| 161-000-670 | Cylindrical torsion spring | |
| 161-000-679 | Shaft | |
| 161-000-682 | Toothed Segment | |
| 161-000-704 | Scissors Blade Steel | |
| 161-000-771 | Membrane | |
| 161-000-774 | Cover | 161-008-859 |
| 161-000-775 | Insert yellow | |
| 161-000-776 | Hood | |
| 161-000-777 | Cpl. Hood | |
| 161-000-807 | Bll Pivot | |
| 161-000-824 | Sensor bracket | |
| 161-000-831 | Pressure Spring | |
| 161-000-871 | Bolt | |
| 161-000-884 | Cot 19x35x18,3mm J-490-A Gray | |
| 161-000-903 | Protecting Cap | |
| 161-000-904 | Lever | |
| 161-000-913 | Spacer bushing | |
| 161-000-985 | Bracing plate | |

| 9 Digit Nr. | Description | Other Numbers |
|-------------|---------------------------------|---------------|
| 161-001-033 | Bearing | |
| 161-001-092 | Toothed Belt 100 S2M 500 | 161-012-808 |
| 161-001-110 | Track Roller lid | |
| 161-001-126 | Initiator plate | |
| 161-001-128 | Cone/sleeve buffer | |
| 161-001-161 | Cpl. Pneumatic Cylinder 10 x 10 | |
| 161-001-274 | Draw Spring | |
| 161-001-287 | Intermediate piece | |
| 161-001-288 | Clamping bolt | |
| 161-001-292 | Spur-toothed conic wheel | |
| 161-001-293 | Spur-toothed conic wheel | |
| 161-001-294 | Drive shaft | |
| 161-001-296 | Bearing housing | |
| 161-001-299 | Housing Cover | |
| 161-001-303 | Spacer bushing | |
| 161-001-305 | Supporting angle | |
| 161-001-311 | Bearing flange | |
| 161-001-313 | Cpl.Pull Rod | |
| 161-001-324 | Shaft | |
| 161-001-326 | Spur-toothed conic | |
| 161-001-327 | Bearing plate | |
| 161-001-329 | Lever | |
| 161-001-333 | Bolt | |
| 161-001-346 | Centering Bolt | |
| 161-001-363 | Scissors support | |
| 161-001-424 | Clip | |
| 161-001-496 | Track roller axle | |
| 161-001-519 | Holding Plate | |
| 161-001-522 | Cleaner | |
| 161-001-597 | Guide Rod | |
| 161-001-631 | Roller carrier | |
| 161-001-635 | Bolt | |
| 161-001-639 | Belt cover | |
| 161-001-675 | Supporting angle 1 | |
| 161-001-676 | Supporting angle 2 | |
| 161-001-678 | Supporting angle 3 | |
| 161-001-716 | Fan Wheel D=488 | |
| 161-001-770 | Eccentric stop | |
| 161-001-778 | Lubrication strip | |
| 161-001-824 | Lever RH | |

ACO SE-20

| <u>9 Digit Nr.</u> | <u>Description</u> | <u>Other Numbers</u> |
|--------------------|-------------------------|----------------------|
| 161-001-825 | Lever LH | |
| 161-001-889 | Sensor bracket | |
| 161-001-918 | Ceramic Pim | 117-034-772 |
| 161-001-928 | Bolt | |
| 161-001-929 | Bearing bush | |
| 161-001-930 | Adapter | |
| 161-001-932 | Locking bolt | |
| =E2:G45161-001-996 | Fixed Choke 0,5mm | |
| 161-002-016 | Head plate | 161-005-811 |
| 161-002-065 | Magnet holder | |
| 161-002-067 | Rod | |
| 161-002-071 | Plate angle | |
| 161-002-073 | Distance plate | |
| 161-002-074 | Spacer Bushing | |
| 161-002-075 | Hood | |
| 161-002-080 | Sensor plate | |
| 161-002-083 | Sensor bracket | |
| 161-002-084 | Clamping plate | |
| 161-002-091 | Bolt | |
| 161-002-093 | Beam | |
| 161-002-103 | Locking plate | |
| 161-002-106 | Elbow | |
| 161-002-107 | Chain Holder | |
| 161-002-109 | Elbow | |
| 161-002-120 | Spring | |
| 161-002-123 | Spacer Tube | |
| 161-002-124 | Clamp | |
| 161-002-127 | Sensor bracket | |
| 161-002-128 | Sensor bracket | |
| 161-002-131 | Bolt | |
| 161-002-141 | Lever | |
| 161-002-145 | Eccentric bolt | |
| 161-002-156 | Bearing Flange | |
| 161-002-158 | Toothed Belt 60 S3M 384 | |
| 161-002-159 | Bolt 8 | |
| 161-002-160 | Limit stop-bottom | |
| 161-002-162 | Limit Stop Top | |
| 161-002-176 | Bolt 6 | |
| 161-002-180 | Angle plate | |
| 161-002-181 | Lateral bearing flange | |

| <u>9 Digit Nr.</u> | <u>Description</u> | <u>Other Numbers</u> |
|--------------------|----------------------------|----------------------|
| 161-002-182 | Bearing flange | |
| 161-002-216 | Bearing bolt | |
| 161-002-231 | Spacer bushing | |
| 161-002-235 | Bolt | |
| 161-002-236 | Cylindrical torsion spring | |
| 161-002-243 | Draw Spring | |
| 161-002-244 | Bushing | |
| 161-002-265 | Starter shaft | |
| 161-002-266 | Spring bolt | |
| 161-002-279 | Brake Plate | |
| 161-002-281 | Thrust Roller | |
| 161-002-284 | Spacer strap | |
| 161-002-313 | Stop bow | |
| 161-002-316 | Cover Drive | |
| 161-002-318 | Bolt | |
| 161-002-361 | Plug Angle | |
| 161-002-364 | Cover | |
| 161-002-375 | Flat steel | |
| 161-002-376 | Holding plate | |
| 161-002-379 | Intermediate Lever | |
| 161-002-386 | Spacer bushing | |
| 161-002-396 | Cylindrical torsion spring | |
| 161-002-471 | Spindle | |
| 161-002-473 | Yarn Guide Wire | |
| 161-002-475 | Bearing bolt | |
| 161-002-476 | Spacer bolt | |
| 161-002-477 | Gear Plate | |
| 161-002-478 | Distribution tube | |
| 161-002-481 | Special screw | |
| 161-002-482 | Mounting flange | |
| 161-002-483 | Toothed Wheel Z=30 | |
| 161-002-485 | Axle | |
| 161-002-490 | Spur roller bolt | |
| 161-002-492 | Elbow | |
| 161-002-495 | Distance ring | |
| 161-002-497 | Intermediate Wheel | |
| 161-002-512 | Bearing Bush | |
| 161-002-538 | Bearing Housing | |
| 161-002-540 | V-belt pulley 60 150 S5M | |
| 161-002-541 | V-belt pulley 60 150 S5M | |

ACO SE-20

| 9 Digit Nr. | Description | Other Numbers |
|-------------|---------------------------|---------------|
| 161-002-544 | Shaft | |
| 161-002-575 | Shaft | |
| 161-002-606 | Stop bracket | |
| 161-002-688 | Latch LH | |
| 161-002-689 | Latch RH | |
| 161-002-740 | Bearing Profile | |
| 161-010-261 | Cover | |
| 161-010-624 | Bolt | 161-002-747 |
| 161-010-660 | Bearing Bolt | |
| 161-002-749 | Bearing Flange | |
| 161-002-750 | Spring bolt | |
| 161-002-752 | Limit stop | |
| 161-002-766 | Hooked strip | |
| 161-002-786 | Stabilizer | |
| 161-002-791 | Package depositor shaft | |
| 161-002-797 | Cylindrical roller | |
| 161-002-798 | Large taper roller | |
| 161-002-799 | Small taper roller | |
| 161-002-805 | Sliding Film | |
| 161-002-841 | Brake Shoe | |
| 161-002-843 | Pressure Spring | |
| 161-002-869 | Stop bush | |
| 161-002-870 | Spiral Hose lenght: 540mm | |
| 161-002-871 | Hose Clip | |
| 161-002-878 | Toothed Belt 60 S2M 320 | |
| 161-002-885 | Limit Stop, RH | |
| 161-002-887 | Limit Stop, LH | |
| 161-002-889 | Spring bushing | |
| 161-002-897 | Axle 6 | |
| 161-002-898 | Sensor bracket | |
| 161-002-900 | Axle 6 | |
| 161-002-913 | Eccentric bolt | |
| 161-002-919 | Spacer bolt | |
| 161-002-921 | Axle | |
| 161-002-928 | Bolt | |
| 161-002-931 | Axle | |
| 161-002-933 | Clamping block | |
| 161-002-940 | Torsion Spring | |
| 161-002-989 | Reversal Plate 2 | |
| 161-002-990 | Reversal Plate | |

| 9 Digit Nr. | Description | Other Numbers |
|-------------|-----------------------------|-------------------------|
| 161-002-994 | Gas Spring | |
| 161-003-020 | Sensor Bracket | |
| 161-003-028 | Bearing bolt | |
| 161-003-029 | Pressure Spring | |
| 161-003-030 | Deflection pulley | |
| 161-003-032 | Bearing shaft | |
| 161-003-033 | Guiding element | |
| 161-003-034 | Bracket bottom | |
| 161-003-035 | Strap | |
| 161-003-037 | Eccentric bolt | |
| 161-003-038 | Washer 2mm | |
| 161-003-039 | Clamping piece | |
| 161-003-041 | Covering plate | |
| 161-003-044 | Spacer block | |
| 161-003-047 | Spacer block | |
| 161-003-063 | Cleaning Window Top | 161-002-165 |
| 161-003-064 | Cleaning Window Bottom | 161-002-164 |
| 161-003-106 | Washer | |
| 161-003-110 | Bearing bolt | |
| 161-003-111 | Bearing bush | |
| 161-003-118 | Brake Plate | |
| 161-003-119 | Spherical washer | |
| 161-003-123 | Spur roller bolt | |
| 161-003-129 | Cover | |
| 161-003-191 | Yarn Guide Lever | |
| 161-003-198 | Bracket | 161-011-006/161-011-007 |
| 161-003-203 | Adapter Plate lh. cyl. | |
| 161-003-204 | Cpl. Adapter Plate lh. cyl. | |
| 161-003-220 | Cover | |
| 161-003-221 | Cover | |
| 161-003-258 | Ball pivot | |
| 161-003-276 | Bolt Cylinder | |
| 161-003-279 | Drive Wheel Body | |
| 161-003-280 | Toothed Wheel Z=87 | |
| 161-003-281 | Pressure Flange | |
| 161-003-294 | Spacer bolt | |
| 161-003-299 | Pneumatic Cylinder 32x100 | |
| 161-003-302 | Roller | |
| 161-003-342 | Holding Plate | |
| 161-003-343 | Bracket | |

ACO SE-20

| 9 Digit Nr. | Description | Other Numbers |
|-------------|---------------------------------|---------------|
| 161-003-351 | Torsion Spring | |
| 161-003-358 | Cylinder bracket | |
| 161-003-360 | Sensor plate | |
| 161-003-362 | Swivelling lever | |
| 161-003-368 | Pulley | |
| 161-003-430 | Bracing LH | |
| 161-003-431 | Bracing RH | |
| 161-003-490 | Spacer block | |
| 161-003-506 | Holding plate | |
| 161-003-509 | Bearing | |
| 161-003-513 | Cylindrical torsion spring | |
| 161-003-514 | Axle | |
| 161-003-535 | Sensor bracket | |
| 161-003-586 | Flange 44 | |
| 161-003-607 | Deflection Roller | |
| 161-003-608 | Bushing | |
| 161-003-671 | Cpl. Pneumatic Cylinder 12 x 10 | |
| 161-003-677 | Swivelling fastening | 161-003-341 |
| 161-003-704 | Spacer tube | |
| 161-003-705 | Supporting angle | |
| 161-003-719 | V-Belt Pulley | 139-003-917 |
| 161-003-730 | Bolt M4-M4 | |
| 161-003-741 | Sheet plate | |
| 161-003-744 | Funnel | 161-001-763 |
| 161-003-746 | Quick-venting valve | |
| 161-003-793 | Purger | |
| 161-003-831 | Limit stop | |
| 161-003-925 | Flat Head Screw M8x16 | |
| 161-003-934 | Starting Disc | 161-003-205 |
| 161-003-942 | Tension Spring | |
| 161-003-951 | Bearing screw | |
| 161-003-956 | Holder | 161-002-186 |
| 161-003-969 | Cleaning window-top | 161-002-165 |
| 161-003-980 | Cradle stop | |
| 161-003-984 | Limit Stop | |
| 161-004-018 | Slide | |
| 161-004-022 | Tube 400mm | |
| 161-004-031 | Fastening angle | |
| 161-004-032 | Fastening angle | |
| 161-004-053 | Laufrolle | 161-012-784 |

| 9 Digit Nr. | Description | Other Numbers |
|-------------|--------------------------------|---------------|
| 161-004-054 | Spur roller bolt | |
| 161-004-055 | Spur roller bolt | |
| 161-004-065 | Cradle stop | |
| 161-004-095 | Bushing | |
| 161-004-097 | Stop bolt | |
| 161-004-123 | Yarn Support Wire | |
| 161-004-152 | Guide Wire | |
| 161-004-165 | Cross Brace | |
| 161-004-167 | Casterroll | |
| 161-004-176 | Snap spring | |
| 161-004-216 | Lever | 161-002-769 |
| 161-004-219 | Switch Lever | |
| 161-004-227 | Opener arm | 161-004-028 |
| 161-004-230 | Opener shaft | 161-002-146 |
| 161-004-244 | Lever | 161-001-695 |
| 161-004-255 | Yarn Guide Roller w/o Bearing | 161-000-019 |
| 161-004-257 | Threaded Connection | |
| 161-004-287 | Flap | 161-003-512 |
| 161-004-315 | Seal | |
| 161-004-316 | Nozzle Ring | |
| 161-004-327 | Nozzle Ring 0,3mm | |
| 161-004-330 | Cpl. Pneumatic Cylinder 16x100 | |
| 161-004-397 | Carrier plate | |
| 161-004-400 | Sensor bracket | |
| 161-004-406 | Clamping piece | |
| 161-004-407 | Sheet plate | |
| 161-004-423 | Nozzle Ring 1,2 | |
| 161-004-424 | Cpl. Pneumatic Cylinder 32x100 | 161-003-298 |
| 161-004-478 | Cover | 161-004-177 |
| 161-004-499 | Take-up bracket | |
| 161-004-519 | Pivot strap | |
| 161-004-552 | Bearing bolt | |
| 161-004-553 | Roller | |
| 161-004-646 | Protective Cover black | |
| 161-004-718 | Holding plate | |
| 161-004-719 | Buttom part | |
| 161-004-767 | Pipe | |
| 161-004-770 | Fastening angle | |
| 161-004-791 | Rotor Chamber | |
| 161-004-818 | Bushing 6mm | 161-003-031 |

ACO SE-20

| 9 Digit Nr. | Description | Other Numbers |
|-------------|--------------------------------|---|
| 161-004-830 | Supporting plate | |
| 161-004-882 | Housing | 161-001-322 |
| 161-004-885 | Lever | 161-001-330 |
| 161-004-887 | Washer | |
| 161-004-892 | Housing Cover | 161-001-289 |
| 161-004-896 | Shaft | 161-001-283 |
| 161-004-897 | Spacer bushing | 161-000-913 |
| 161-004-898 | Toothed Wheel | 161-001-285 |
| 161-004-899 | Pinion Shaft | 161-001-286 |
| 161-004-900 | Toothed Wheel | 161-001-284 |
| 161-004-901 | Support Arm | 161-001-341 |
| 161-004-906 | Strut | 161-002-424 |
| 161-004-908 | Covering plate | 161-001-347 |
| 161-004-909 | Shield | 161-001-174 |
| 161-004-913 | Spacer bushing | |
| 161-004-942 | Switching Plate | 161-002-269 |
| 161-004-957 | Depositor arm LH | 161-001-266 |
| 161-004-959 | Depositor arm RH | 161-001-263 |
| 161-004-961 | Spring Strap | |
| 161-004-964 | Opener roll | 161-002-819 |
| 161-005-000 | Cradle bearing axle | |
| 161-005-039 | Lowering lever | 161-002-746 |
| 161-005-041 | Bolt | 161-001-226 |
| 161-005-104 | Cleaning window | |
| 161-005-123 | Cpl. Cleaner | |
| 161-005-124 | Holding Plate | 161-001-519 |
| 161-005-125 | Holding Plate | 161-001-520 |
| 161-005-148 | Cylinder D12-H14 | 161-006-795/161-007-422/161-011-516/161-007-253/161-013-097 |
| 161-005-229 | Cpl. Adapter Plate rh. cyl. 54 | 161-000-140 |
| 161-005-255 | Damper axle | 161-000-111 |
| 161-005-257 | Retainer | 161-004-002 |
| 161-005-319 | Compansating lever | 161-004-999 |

| 9 Digit Nr. | Description | Other Numbers |
|-------------|------------------------|-------------------------------------|
| 161-005-405 | Pneumatic Clutch F | |
| 161-005-406 | Pneumatic Clutch M | |
| 161-005-437 | Retainer Lever | 161-002-947 |
| 161-005-478 | Roller Holder | |
| 161-005-530 | Slide Plate LH | 161-001-212 |
| 161-005-532 | Slide Plate RH | 161-001-210 |
| 161-005-533 | Axle | |
| 161-005-534 | Torsion Spring | 161-002-890 |
| 161-005-552 | Clamping Lever | |
| 161-005-563 | Flap | 161-002-888 |
| 161-005-580 | Strut | |
| 161-005-601 | Leaf Spring | 161-002-000 |
| 161-005-651 | Spherical Disc | |
| 161-005-652 | Gripper Prism | 161-002-771 |
| 161-005-680 | Guide Plate | |
| 161-005-701 | Fixed Choke dia. 0,1mm | |
| 161-005-707 | Leaf Spring 0,4mm | |
| 161-005-714 | Locking Lever | 161-001-434 |
| 161-005-715 | Cover | |
| 161-005-716 | Stay Bolt | |
| 161-005-728 | Tension Pulley | |
| 161-005-749 | Cleaning Brush | |
| 161-005-761 | Brake Lever | 161-002-939 |
| 161-005-764 | Guide Plate | 161-002-867 |
| 161-005-787 | Opener Arm | 161-002-868/161-007-437/188-002-129 |
| 161-005-793 | Sliding Piece | 161-004-769 |
| 161-005-836 | Torsion Spring | 161-003-296 |
| 161-005-944 | Cover | 161-004-820 |
| 161-005-954 | Guide Rail TLC18-290 | |
| 161-005-955 | Guide Rail ULC18-1120 | |
| 161-005-956 | Guide Rail TLC18-1200 | |
| 161-005-988 | Brush Shaft | 161-004-626 |

ACO SE-20

| 9 Digit Nr. | Description | Other Numbers |
|-------------|---|-------------------------|
| 161-005-997 | Tension Short | |
| 161-006-050 | Deflection Pulley | 161-005-205 |
| 161-006-103 | Foot | |
| 161-006-111 | Cpl. Pneumatic Cylinder 12x80 | |
| 161-006-131 | Limit Stop | 139-010-994/139-003-831 |
| 161-006-152 | Cpl. Stripping Roller 19x35x18,3mm J-490-A Gray | 161-012-041/161-001-959 |
| 161-006-162 | Sensor Bracket | 161-003-018 |
| 161-006-164 | Sliding Piece | |
| 161-006-196 | Short-Stroke Cylinder 6x15 | |
| 161-006-259 | Slide RH | |
| 161-006-261 | Slide LH | |
| 161-006-286 | Roll-Off Plate | 161-005-527/161-001-216 |
| 161-006-307 | Bearing Bolt | 161-004-549 |
| 161-006-308 | Roller Holder | 161-004-550 |
| 161-006-314 | Distance sleeve | |
| 161-006-321 | Air Filter | |
| 161-006-341 | Yarn Guide Roller | 161-004-254/161-000-896 |
| 161-006-353 | Pinion Shaft T=27 | 161-000-680/161-000-681 |
| 161-006-361 | Mounting strap | |
| 161-006-385 | Cross-bar | |
| 161-006-390 | Cutter Guide | |
| 161-006-406 | Auxiliary Yarn Guide Stepper Motor | |
| 161-006-433 | Bearing Shaft | |
| 161-006-435 | Bearing Support | |
| 161-006-422 | Swivelling Lever | |

| 9 Digit Nr. | Description | Other Numbers |
|-------------|-------------------------|-------------------------------------|
| 161-006-449 | Lever | 161-005-791/161-000-671 |
| 161-006-500 | Fixed Throttle Ø 0,1mm | |
| 161-006-508 | Pressure Control Device | 161-005-025 |
| 161-006-532 | Cylinder 12x25 | |
| 161-006-550 | Cpl. Swivelling Lever | |
| 161-006-559 | Lever | 161-002-466 |
| 161-006-561 | Bushing | 161-002-806 |
| 161-006-562 | Cyl. Torsion Spring | 161-002-264 |
| 161-006-565 | Craddle Opener Carrier | 161-004-027/161-001-017 |
| 161-006-567 | Axialhebel | 161-002-811 |
| 161-006-657 | Toothed Belt Wheel Z=41 | 161-005-995/117-027-579 |
| 161-006-705 | Yarn Guide Roller | 161-006-336/161-005-751 |
| 161-006-777 | Bracket | 161-004-404 |
| 161-006-804 | Adapter Plate lh. | |
| 161-006-806 | Cpl. Adapter Plate lh. | |
| 161-006-857 | Butterfly valve | 161-003-600 |
| 161-006-865 | Motor Plate | 161-005-713/161-004-849 |
| 161-006-874 | Shield | 161-006-845, 161-006-534 |
| 161-006-883 | Bearing Shaft | 161-005-993 |
| 161-006-885 | Toothed Belt Wheel Z=41 | 161-005-992 |
| 161-006-886 | Drive Shaft lh. | 161-005-848/161-004-861/161-001-573 |
| 161-006-887 | Drive Shaft rh. | |
| 161-006-942 | Stop bush | |
| 161-006-946 | Bolzen | 161-000-823 |
| 161-007-019 | Gripper finger | 161-004-212/161-002-154 |

ACO SE-20

| 9 Digit Nr. | Description | Other Numbers |
|-------------|-------------------------------|-------------------------------------|
| 161-007-081 | Shield | 161-007-021/161-005-456 |
| 161-007-022 | Bearing Bolt | 161-005-756 |
| 161-007-028 | Swivelling Bolt | |
| 161-007-032 | Spacer Ring Cyl. | |
| 161-007-092 | Bracer Ring Bracket | 161-003-757 |
| 161-007-097 | Lever RH | 161-007-079/161-006-250/161-001-758 |
| 161-007-098 | Lever LH | 161-007-080/161-006-251/161-001-797 |
| 161-007-144 | Pressure Pad | 161-002-549 |
| 161-007-150 | Bracket | 161-002-545 |
| 161-007-162 | V-Belt Pulley | 161-002-557 |
| 161-007-167 | Shaft | 161-002-539 |
| 161-007-198 | Mounting angle Storage nozzle | 161-003-485 |
| 161-007-292 | Signal Lamp | |

| 9 Digit Nr. | Description | Other Numbers |
|-------------|--------------------------|---|
| 161-007-295 | Cap | 161-001-920 |
| 161-007-309 | Bearing Flange | 161-000-677 |
| 161-007-311 | Bearing | 161-000-688 |
| 161-007-440 | Bearing Shaft | 161-006-853 |
| 161-007-414 | Take-Up Cylinder | 161-007-229/161-006-819/161-004-766/161-003-263/161-001-933/161-011-511/161-013-091 |
| 161-007-415 | Cylinder Ø15 | 161-007-230/161-006-976/161-006-036/161-004-750/161-011-513/161-013-092 |
| 161-007-419 | Cradle Cylinder | 161-007-236/161-006-736/161-000-133/161-009-617/161-011-515/161-010-916/161-013-094 |
| 161-007-420 | Cylinder 25 x 50 HUB | 161-007-233/161-006-826/161-003-121 |
| 161-007-428 | Cylinder 25 x 25 HUB | 161-007-240/161-006-797/161-003-164 |
| 161-007-439 | Opener Arm | 161-005-796/161-004-163/161-005-797 |
| 161-007-453 | Guide Roller - centric | 161-003-124 |
| 161-007-454 | Guide Roller - eccentric | 161-003-125 |
| 161-007-456 | Bearing Bolt | |

ACO SE-20

| 9 Digit Nr. | Description | Other Numbers |
|-------------|-------------------------------|-------------------------------------|
| 161-007-457 | Leaf Spring | 161-007-024/161-005-708 |
| 161-007-468 | Joint head | |
| 161-007-469 | Piston Rod | |
| 161-007-555 | Cpl. Opener Arm | 161-005-788/161-005-275/161-003-985 |
| 161-007-556 | Opener Arm | 161-005-789/161-005-276/161-003-986 |
| 161-007-576 | Draw-off Tube | |
| 161-007-584 | Cylinder Cover | |
| 161-007-595 | Bridge Handle | 161-006-670/139-003-840 |
| 161-007-596 | Handle | 161-006-672/166-007-702 |
| 161-007-609 | Clip | 161-005-486 |
| 161-007-622 | Cpl. Pneumaticcylinder 20x185 | 161-004-804 |
| 161-007-660 | Fibre Channel Seal | |
| 161-007-677 | Winding Drum Drive | |
| 161-007-803 | Holder | 161-003-271 |
| 161-007-812 | Hinge bolt | 161-002-992 |
| 161-007-813 | Spacer bolt | 161-002-993 |
| 161-007-840 | Motor Plate | |
| 161-007-841 | Stay Bolt | |
| 161-007-842 | Bushing | |
| 161-007-843 | Depositor Arm LH | |
| 161-007-848 | Stabilizer | |
| 161-007-849 | Package Depositor Shaft | |
| 161-007-852 | Bearing | |
| 161-007-874 | Guiding element lh. | |
| 161-007-875 | Guiding element rh. | |
| 161-007-877 | Chain holder | 161-001-253 |
| 161-007-888 | Connecting plate | 161-007-372/161-006-505/161-004-935 |

| 9 Digit Nr. | Description | Other Numbers |
|-------------|------------------------------------|---|
| 161-007-901 | Flat steel | 161-001-766 |
| 161-007-941 | End Angle | |
| 161-007-962 | Bearing Cap | 161-004-654 |
| 161-008-026 | Distributor | 161-007-914 |
| 161-008-040 | Intake Motor | 161-004-001 / 161-001-163 / 161-012-403 / 161-012-260 |
| 161-008-060 | Cover only | 161-007-464 |
| 161-008-157 | Oil Container | |
| 161-008-162 | Flat Belt 10 x 420 mm | |
| 161-008-168 | Sustainer | 161-008-735/161-002-033 |
| 161-008-254 | Auxiliary Yarn Guide Stepper Motor | |
| 161-008-256 | Deflection Pulley | 161-005-731 |
| 161-008-268 | Precondenser 12 White | 161-001-101 |
| 161-008-275 | Clip | 161-006-128 |
| 161-008-294 | Roller Holder | |
| 161-008-296 | Leaf Spring | |
| 161-008-319 | Centering angle | 161-004-114 |
| 161-008-377 | Yarn Guide Roller | 161-008-218 |
| 161-008-532 | Precondenser 8 Blue | 161-004-166 |
| 161-008-554 | Yarn Preparation | 161-008-027 |
| 161-008-662 | Bearing Screw | 161-006-225 |
| 161-008-637 | Cylinder 25 x 50 HUB | 161-013-093/161-011-514 |
| 161-008-777 | Wire Sensor | |
| 161-008-846 | Ring | |
| 161-008-860 | Insert black | |
| 161-008-866 | Cpl. Brush | 161-008-865 |
| 161-009-158 | Cpl. Platine | 161-006-342 |
| 161-009-205 | Limit Stop | |

ACO SE-20

| 9 Digit Nr. | Description | Other Numbers |
|-------------|---------------------------------------|-------------------------------------|
| 161-009-380 | Cylinder Cover | |
| 161-009-464 | Drive Gear | |
| 161-009-498 | Coupling plate | 161-003-962/161-004-270 |
| 161-009-563 | Covering Plate | 161-005-687/161-002-971/161-001-412 |
| 161-009-564 | Cpl. Covering Plate | 161-005-717/161-004-331 |
| 161-009-565 | Cpl. Covering Plate | 161-006-129 |
| 161-009-602 | Spinning Position Cover | 161-007-286/161-006-371/161-004-233 |
| 161-009-603 | Spinning Position Cover | 161-007-287/161-006-693 |
| 161-009-605 | Bearing bolt | 161-001-906 |
| 161-009-670 | Clamping Lever | 161-003-975/161-002-755 |
| 161-009-674 | Spacer Ring 1°50 | |
| 161-009-769 | Bolt | 161-003-105 |
| 161-009-787 | Posicomm bracket LH | 161-002-901 |
| 161-009-850 | Feeder arm | 161-002-139/161-004-206 |
| 161-009-991 | Fastening Element | |
| 161-010-060 | Protective Plate | |
| 161-010-062 | Posicomm bracket RH | 161-002-899 |
| 161-010-117 | Craddle Shock Absorber without Magnet | 161-009-381 |
| 161-010-302 | Reserve filter | 161-003-230 |
| 161-010-303 | Filter | 161-003-232 |
| 161-010-304 | Filter | 161-003-234 |
| 161-010-315 | Opener bolt | 161-004-644/161-001-355 |

| 9 Digit Nr. | Description | Other Numbers |
|-------------|----------------------------|-----------------------------|
| 161-010-395 | Wire Bow | 161-002-010 |
| 161-010-449 | Cylindrical Torsion Spring | 161-003-351 |
| 161-010-722 | Bearing | 161-002-968 |
| 161-010-723 | Thrust bearing | 161-002-965 |
| 161-010-804 | Cylinder bracket | 161-006-404/ 161-004-546 |
| 161-010-822 | Supporting Arm | 161-005-440 |
| 161-010-859 | Opening Lever | |
| 161-010-870 | Holding Plate | 161-006-382 |
| 161-010-889 | Sensor Bracket | 161-006-224 |
| 161-010-983 | Opening assembly housing | 161-004-889/161-001-278 |
| 161-011-037 | Holding Plate | 161-006-775/161-0004-402 |
| 161-011-048 | Slide | 161-004-169 |
| 161-011-309 | Sensor bracket | 161-004-563 |
| 161-011-343 | Catch Pocket | 161-001-119 |
| 161-011-498 | Splicer Pipe | 161-002-959/ 161-000-706 |
| 161-011-564 | Depositor Arm LH | |
| 161-011-914 | Swivelling Lever | 161-010-162, 161-007-030 |
| 161-012-004 | Cpl. Shield 1°50 | 161-011-977, 161-009-792 |
| 161-012-018 | Yarn Shears | 161-004-711 |
| 161-012-132 | Seal | 161-007-594/161-007-432 |
| 161-012-260 | Intake Motor | |
| 161-012-318 | Starter arm | 161-002-926 |

ACO SE-20

| <u>9 Digit Nr.</u> | <u>Description</u> | <u>Other Numbers</u> |
|--------------------|--|---|
| 161-012-319 | Motor | 161-006-279 |
| 161-012-322 | Motor | 161-006-282/161-000-556 |
| 161-012-380 | Lever | |
| 161-012-485 | Valve Unit | 161-012-233, 161-011-167, 161-009-172, 161-007-513, 161-005-140 |
| 161-012-486 | Valve Unit | 161-012-234, 161-011-447, 161-011-168, 161-009-173, 161-007-512, 161-004-089 |
| 161-012-487 | Valve Unit | 161-012-235, 161-011-169, 161-010-203, 161-009-338, 161-008-908 |
| 161-012-488 | Valve Unit | 161-012-236, 161-011-448, 161-008-906, 161-008-716 |
| 161-012-648 | Cpl. Cleaner | 161-011-299 |
| 161-012-649 | Retainer Plate RE | 161-011-300 |
| 161-012-650 | Retainer Plate LH | 161-011-301 |
| 161-012-651 | Cleaner | 161-011-302 |
| 161-012-699 | Cpl. Cradle Shock Absorber with Magnet | 161-010-118, 161-008-231, 161-007-717, 161-007-497, 161-006-513, 161-006-239, 161-003-476, 161-008-663 |
| 161-013-112 | Cpl. Shield Cyl. | 161-011-991, 161-011-912, 161-008-295, 161-007-802, 161-007-231, 161-007-082 |

| <u>9 Digit Nr.</u> | <u>Description</u> | <u>Other Numbers</u> |
|--------------------|--|-------------------------|
| 161-013-397 | 3/2 Way Valve | 161-008-248 |
| 161-013-420 | Mounting Angle | |
| 161-013-597 | Spring Strap | |
| 161-013-659 | Valve | 161-008-230/161-007-470 |
| 161-340-308 | Tube Conveyor Belt 30 x 47.870mm 192Spl. | |
| 161-340-309 | Tube Conveyor Belt 30 x 53.447mm 216Spl. | |
| 161-340-310 | Tube Conveyor Belt 30 x 59.023mm 240Spl. | |
| 161-340-311 | Tube Conveyor Belt 30 x 64.600mm 264Spl. | |
| 161-340-312 | Tube Conveyor Belt 30 x 70.176mm 288Spl. | |
| 161-340-313 | Tube Conveyor Belt 30 x 75.753mm 312Spl. | |
| 161-340-314 | Tube Conveyor Belt 30 x 81.330mm 336Spl. | |
| 161-340-315 | Tube Conveyor Belt 30 x 86.906mm 360Spl. | |
| 161-340-316 | Tibe Conveyor Belt 30 x 92.483mm 384Spl. | |

ACO SE-20

| 9 Digit Nr. | Description | Other Numbers |
|-------------|---|---------------|
| 161-340-317 | Tube Conveyor Belt 30 x 98.059mm 408Spl. | |
| 161-340-318 | Tube Conveyor Belt 30 x 103.636mm 432Spl. | |
| 161-340-319 | Tube Conveyor Belt 30 x 109.213mm 456Spl. | |
| 161-340-320 | Tube Conveyor Belt 30 x 114.789mm 480Spl. | |
| 161-340-321 | Tube Conveyor Belt 30 x 120x366mm 504Spl. | |
| 161-340-322 | Tube Conveyor Belt 30 x 125.942mm 528Spl. | |
| 161-340-323 | Tube Conveyor Belt 30 x 131.519mm 552Spl. | |
| 161-340-324 | Tube Conveyor Belt 30 x 137.096mm 576Spl. | |
| 161-340-325 | Tube Conveyor Belt 30 x 142.672mm 600Spl. | |
| 161-340-330 | Tube Conveyor Belt 30 x 170.555mm 720Spl. | |
| 161-340-331 | Tube Conveyor Belt 30 x 176.132 mm | |
| 161-340-332 | Tube Conveyor Belt 30 x 181.708 mm | |
| 161-340-600 | Pneumatic Tube Ø 4 mm | |
| 161-340-601 | Pneumatic Tube black Ø 4 x 380 mm | |
| 161-340-602 | Pneumatic Tube yellow Ø 4 x 450 mm | |
| 161-340-603 | Pneumatic Tube blue Ø 4 x 450 mm | |
| 161-340-604 | Pneumatic Tube yellow Ø 4 x 750 mm | |
| 161-340-605 | Pneumatic Tube black Ø 4 x 50 mm | |
| 161-340-606 | Pneumatic Tube black Ø 4 x 500 mm | |
| 161-340-607 | Pneumatic Tube yellow Ø 4 x 350 mm | |
| 161-340-608 | Pneumatic Tube black Ø 4 x 180 mm | |
| 161-340-609 | Pneumatic Tube yellow Ø 4 x 410 mm | |
| 161-340-612 | Pneumatic Tube blue Ø 4 x 350 mm | |
| 161-340-613 | Pneumatic Tube red Ø 4 x 300 mm | |
| 161-340-614 | Pneumatic Tube yellow Ø 4 x 500 mm | |
| 161-340-615 | Pneumatic Tube green Ø 4 x 400 mm | |

| 9 Digit Nr. | Description | Other Numbers |
|-------------|--|---------------|
| 161-340-616 | Pneumatic Tube black Ø 4 x 650 mm | |
| 161-340-617 | Pneumatic Tube black Ø 4 x 1.000 mm | |
| 161-340-619 | Pneumatic Tube black Ø 4 x 850 mm | |
| 161-340-620 | Pneumatic Tube blue Ø 4 x 210 mm | |
| 161-340-621 | Pneumatic Tube red Ø 4 x 160 mm | |
| 161-340-622 | Pneumatic Tube yellow Ø 4 x 970 mm | |
| 161-340-623 | Pneumatic Tube black Ø 4 x 720 mm | |
| 161-340-624 | Pneumatic Tube blue Ø 4 x 570 mm | |
| 161-340-625 | Pneumatic Tube black Ø 4 x 1.220 mm | |
| 161-340-626 | Pneumatic Tube blue Ø 4 x 290 mm | |
| 161-340-627 | Pneumatic Tube red Ø 4 x 200 mm | |
| 161-340-700 | Pneumatic Tube Ø 6 mm | |
| 161-340-701 | Pneumatic Tube black Ø 6 x 600 mm | |
| 161-340-702 | Pneumatic Tube blue Ø 6 x 750 mm | |
| 161-340-703 | Pneumatic Tube black Ø 6 x 400 mm | |
| 161-340-704 | Pneumatic Tube black Ø 6 x 60 mm | |
| 161-340-705 | Pneumatic Tube black Ø 6 x 35 mm | |
| 161-340-706 | Pneumatic Tube blue Ø 6 x 500 mm | |
| 161-340-707 | Pneumatic Tube black Ø 6 x 500 mm | |
| 161-340-800 | Pneumatic Tube black Ø 8 mm | |
| 161-340-801 | Pneumatic Tube black Ø 8 x 700 mm | |
| 161-340-808 | Pneumatic Tube black Ø 8 x 750 mm | |
| 161-341-801 | Doffer Conveyor Belt 124 x 13.284mm 24Spl. | |
| 161-341-802 | Doffer Conveyor Belt 124 x 18.857mm 48Spl. | |
| 161-341-803 | Doffer Conveyor Belt 124 x 24.431mm 72Spl. | |
| 161-341-804 | Doffer Conveyor Belt 124 x 30.004mm 96Spl. | |

ACO SE-20

| 9 Digit Nr. | Description | Other Numbers |
|-------------|--|---------------|
| 161-341-805 | Doffer Conveyor Belt 124 x 35.577mm 120Spl. | |
| 161-341-806 | Doffer Conveyor Belt 124 x 41.151mm 144Spl. | |
| 161-341-807 | Doffer Conveyor Belt 124 x 46.724mm 168Spl. | |
| 161-341-808 | Doffer Conveyor Belt 124 x 52.298mm 192Spl. | |
| 161-341-809 | Doffer Conveyor Belt 124 x 57.871mm 216Spl. | |
| 161-341-810 | Doffer Conveyor Belt 124 x 63.444mm 240Spl. | |
| 161-341-811 | Doffer Conveyor Belt 124 x 69.018mm 264Spl. | |
| 161-341-812 | Doffer Conveyor Belt 124 x 74.591mm 288Spl. | |
| 161-341-813 | Doffer Conveyor Belt 124 x 80.164mm 312Spl. | |
| 161-341-814 | Doffer Conveyor Belt 124 x 85.738mm 336Spl. | |
| 161-341-815 | Doffer Conveyor Belt 124 x 91.311mm 360Spl. | |
| 161-341-816 | Doffer Conveyor Belt 124 x 96.885mm 384Spl. | |
| 161-341-817 | Doffer Conveyor Belt 124 x 102.458mm 408Spl. | |
| 161-341-818 | Doffer Conveyor Belt 124 x 108.031mm 432Spl. | |
| 161-341-819 | Doffer Conveyor Belt 124 x 113.605mm 456Spl. | |
| 161-341-820 | Doffer Conveyor Belt 124 x 119.178mm 480Spl. | |
| 161-342-408 | Trash Conveyor Belt 100 x 47.076mm 192Spl. | 161-341-508 |
| 161-342-409 | Trash Conveyor Belt 100 x 52.664mm 216Spl. | 161-341-509 |
| 161-342-410 | Trash Conveyor Belt 100 x 58.251mm 240Spl. | 161-341-510 |
| 161-342-411 | Trash Conveyor Belt 100 x 63.839mm 264Spl. | 161-341-511 |
| 161-342-412 | Trash Conveyor Belt 100 x 69.427mm 288Spl. | 161-341-512 |
| 161-342-413 | Trash Conveyor Belt 100 x 75.014mm 312Spl. | 161-341-513 |
| 161-342-414 | Trash Conveyor Belt 100 x 80.602mm 336Spl. | 161-341-514 |
| 161-342-415 | Trash Conveyor Belt 100 x 86.190mm 360Spl. | 161-341-515 |
| 161-342-416 | Trash Conveyor Belt 100 x 91.777mm 384Spl. | 161-341-516 |
| 161-342-417 | Trash Conveyor Belt 100 x 97.365mm 408Spl. | 161-341-517 |

| 9 Digit Nr. | Description | Other Numbers |
|-------------|---|---------------|
| 161-342-418 | Trash Conveyor Belt 100 x 102.953mm 432Spl. | |
| 161-342-419 | Trash Conveyor Belt 100 x 108.540mm 456Spl. | |
| 161-342-420 | Trash Conveyor Belt 100 x 114.128mm 480Spl. | |
| 161-343-121 | Trash Conveyor belt 100 x 119.478mm | |
| 161-343-123 | Trash Conveyor Belt 100 x 130.632 mm | |
| 161-343-701 | Doffer Conveyor Belt 124 x 13.597mm | 161-342-801 |
| 161-343-702 | Doffer Conveyor Belt 124 x 19.170mm | 161-342-802 |
| 161-343-703 | Doffer Conveyor Belt 124 x 24.744mm | 161-342-803 |
| 161-343-704 | Doffer Conveyor Belt 124 x 30.317mm | 161-342-804 |
| 161-343-705 | Doffer Conveyor Belt 124 x 35.891mm | 161-342-805 |
| 161-343-706 | Doffer Conveyor Belt 124 x 41.464mm | 161-342-806 |
| 161-343-707 | Doffer Conveyor Belt 124 x 47.037mm | 161-342-807 |
| 161-343-708 | Doffer Conveyor Belt 124 x 52.611mm | 161-342-808 |
| 161-343-709 | Doffer Conveyor Belt 124 x 58.184mm | 161-342-809 |
| 161-343-710 | Doffer Conveyor Belt 124 x 63.757mm | 161-342-810 |
| 161-343-711 | Doffer Conveyor Belt 124 x 69.331mm | 161-342-811 |
| 161-343-712 | Doffer Conveyor Belt 124 x 74.904mm | 161-342-812 |
| 161-343-713 | Doffer Conveyor Belt 124 x 80.478mm | 161-342-813 |
| 161-343-714 | Doffer Conveyor Belt 124 x 86.051mm | 161-342-814 |
| 161-343-715 | Doffer Conveyor Belt 124 x 91.624mm | 161-342-815 |
| 161-343-716 | Doffer Conveyor Belt 124 x 97.198mm | 161-342-816 |
| 161-343-717 | Doffer Conveyor Belt 124 x 102.771mm | 161-342-817 |
| 161-343-718 | Doffer Conveyor Belt 124 x 108.345mm | 161-342-818 |
| 161-343-719 | Doffer Conveyor Belt 124 x 113.918mm | 161-342-819 |
| 161-343-720 | Doffer Conveyor Belt 124 x 119.491mm | 161-342-820 |
| 161-343-721 | Doffer Conveyor Belt 124 x 125.065mm | 161-342-821 |

ACO SE-20

| 9 Digit Nr. | Description | Other Numbers |
|-------------|--------------------------------------|---------------|
| 161-343-722 | Doffer Conveyor Belt 124 x 130.638mm | 161-342-822 |
| 161-343-723 | Doffer Conveyor Belt 124 x 136.211mm | 161-342-823 |
| 161-343-724 | Doffer Conveyor Belt 124 x 141.785mm | 161-342-824 |
| 161-343-725 | Doffer Conveyor Belt 124 x 147.358mm | 161-342-825 |
| 161-343-726 | Doffer Conveyor Belt 124 x 152.932mm | 161-342-826 |
| 161-343-727 | Doffer Conveyor Belt 124 x 158.505mm | 161-342-827 |
| 161-343-728 | Doffer Conveyor Belt 124 x 164.078mm | 161-342-828 |
| 161-343-729 | Doffer Conveyor Belt 124 x 169.652mm | 161-342-829 |
| 161-343-730 | Doffer Conveyor Belt 124 x 175.225mm | 161-342-830 |
| 161-343-801 | Trash Conveyor Belt 100 x 7.962mm | |
| 161-343-802 | Trash Conveyor Belt 100 x 13.550mm | |
| 161-343-803 | Trash Conveyor Belt 100 x 19.138mm | |
| 161-343-804 | Trash Conveyor Belt 100 x 24.725mm | |
| 161-343-805 | Trash Conveyor Belt 100 x 30.313mm | |
| 161-343-806 | Trash Conveyor Belt 100 x 35.901mm | |
| 161-343-807 | Trash Conveyor Belt 100 x 41.488mm | |
| 161-343-808 | Trash Conveyor Belt 100 x 47.076mm | |
| 161-343-809 | Trash Conveyor Belt 100 x 52.664mm | |
| 161-343-810 | Trash Conveyor Belt 100 x 58.251mm | |
| 161-343-811 | Trash Conveyor Belt 100 x 63.839mm | |
| 161-343-812 | Trash Conveyor Belt 100 x 69.427mm | |
| 161-343-813 | Trash Conveyor Belt 100 x 75.014mm | |
| 161-343-814 | Trash Conveyor Belt 100 x 80.602mm | |
| 161-343-815 | Trash Conveyor Belt 100 x 86.190mm | |
| 161-343-816 | Trash Conveyor Belt 100 x 91.595mm | |
| 161-343-817 | Trash Conveyor Belt 100 x 97.172mm | |

| 9 Digit Nr. | Description | Other Numbers |
|-------------|-------------------------------------|---------------|
| 161-343-818 | Trash Conveyor Belt 100 x 102.749mm | |
| 161-343-819 | Trash Conveyor Belt 100 x 108.325mm | |
| 161-343-820 | Trash Conveyor Belt 100 x 113.902mm | 161-343-120 |
| 161-343-821 | Trash Conveyor Belt 100 x 119.478mm | |
| 161-343-822 | Trash Conveyor Belt 100 x 125.055mm | |
| 161-343-823 | Trash Conveyor Belt 100 x 130.632mm | |
| 161-343-824 | Trash Conveyor Belt 100 x 136.208mm | |
| 161-343-825 | Trash Conveyor Belt 100 x 141.785mm | |
| 161-343-826 | Trash Conveyor Belt 100 x 147.361mm | |
| 161-343-827 | Trash Conveyor Belt 100 x 152.938mm | |
| 161-343-828 | Trash Conveyor Belt 100 x 158.515mm | |
| 161-343-829 | Trash Conveyor Belt 100 x 164.091mm | |
| 161-343-830 | Trash Conveyor Belt 100 x 169.668mm | |
| 161-344-207 | Trash Conveyor belt 95 x 41.488mm | |
| 161-344-208 | Trash Conveyor belt 95 x 47.076mm | |
| 161-344-209 | Trash Conveyor belt 95 x 52.664mm | |
| 161-344-210 | Trash Conveyor belt 95 x 58.251mm | |
| 161-344-211 | Trash Conveyor belt 95 x 63.839mm | |
| 161-344-212 | Trash Conveyor belt 95 x 69.427mm | |
| 161-344-213 | Trash Conveyor belt 95 x 75.014mm | |
| 161-344-214 | Trash Conveyor belt 95 x 80.602mm | |
| 161-344-215 | Trash Conveyor belt 95 x 86.190mm | 161-347-015 |
| 161-344-216 | Trash Conveyor belt 95 x 91.595mm | |
| 161-344-217 | Trash Conveyor belt 95 x 97.172mm | |
| 161-344-218 | Trash Conveyor belt 95 x 102.749mm | |
| 161-344-219 | Trash Conveyor belt 95 x 108.325mm | |

ACO SE-20

| 9 Digit Nr. | Description | Other Numbers |
|-------------|---|---------------|
| 161-344-220 | Trash Conveyor belt 95 x 113.902mm | |
| 161-344-221 | Trash Conveyor belt 95 x 119.478mm | |
| 161-344-222 | Trash Conveyor belt 95 x 125.055mm | 161-346-322 |
| 161-344-223 | Trash Conveyor belt 95 x 130.632mm | |
| 161-344-319 | Doffer Conveyor belt 124 x 115.916mm | |
| 161-344-720 | Doffer Conveyor belt 124 x 119.632mm | |
| 161-344-722 | Doffer Conveyor Belt 124 x 130.779 mm | |
| 161-344-723 | Doffer Conveyor belt 124 x 136.352mm | 161-344-323 |
| 161-344-724 | Doffer Conveyor belt 124 x 141.926mm | |
| 161-344-830 | Doffer Conveyor Belt 124 x 177.370mm., 720 Spl. | |
| 161-345-710 | Doffer Conveyor Belt 124 x 63.898 mm | |
| 161-345-711 | Doffer Conveyor Belt 124 x 69.427mm | |
| 161-345-712 | Doffer Conveyor Belt 124 x 75.045mm | |
| 161-345-713 | Doffer Conveyor Belt 124 x 80.618mm | |
| 161-345-714 | Doffer Conveyor Belt 124 x 86.192mm, 336 Spl. | |
| 161-345-715 | Doffer Conveyor Belt 124 x 91.765 mm, 360 Spl. | |
| 161-345-716 | Doffer Conveyor Belt 124 x 97.338 mm, 384 Spl. | |
| 161-345-719 | Doffer Conveyor Belt 124 x 114.059mm, 456 Spl. | |
| 161-345-720 | Doffer Conveyor Belt 124 x 119.362 mm, 480 Spl. | |
| 161-345-721 | Doffer Conveyor Belt 124 x 125.205mm | |
| 161-345-722 | Doffer Conveyor Belt 124 x 130.779mm | |
| 161-345-723 | Doffer Conveyor Belt 124 x 136.352mm | |
| 161-345-724 | Doffer Conveyor Belt 124 x 141.926mm | |
| 161-345-828 | Doffer Conveyor Belt 124 x 166.223 mm, 672 Spl. | |
| 161-345-830 | Doffer Conveyor Belt 124 x 177.370mm, 720 Spl. | |
| 161-345-831 | Doffer Conveyor Belt 124 x 182.944 mm | |

| 9 Digit Nr. | Description | Other Numbers |
|-------------|---|-------------------------|
| 161-345-832 | Doffer Conveyor Belt 124 x 188.517 mm | |
| 161-346-312 | Trash Conveyor Belt 95 x 69.427 mm | |
| 161-346-313 | Trash Conveyor Belt 95 x 75.014 mm | |
| 161-346-318 | Trash Conveyor Belt 95x102.749 mm, 432 Spl. | |
| 161-346-319 | Trash Conveyor Belt 95x108.325 mm, 456 Spl. | |
| 161-346-320 | Trash Conveyor Belt 95x113.902 mm, 480 Spl. | |
| 161-346-323 | Trash Conveyor Belt 95x130.632 mm, 552 Spl. | |
| 161-346-330 | Trash Conveyor Belt 95 x 169.668 mm, 720 Spl. | 161-344-230 siehe Notiz |
| 161-346-614 | Trash Conveyor Belt 95 x 80.602mm | |
| 161-346-615 | Trash Conveyor belt 95 x 86.190 mm, 360 Spl. | |
| 161-346-620 | Trash Conveyor Belt 95 x 113.902 mm | |
| 161-346-626 | Trash Conveyor Belt 95 x 147.361 mm, 624 Spl. | |
| 161-346-632 | Trash Conveyor Belt 95 x 180.821 mm | 161-347-032 |
| 161-347-016 | Trash Conveyor Belt 95 x 91.595 mm | |
| 161-347-019 | Trash Conveyor Belt 95 x 108.325 mm | |
| 161-347-030 | Trash Conveyor Belt 95 x 169.668 mm | |
| 161-347-031 | Trash Conveyor Belt 95 x 175.244 mm | |
| 161-350-612 | Pneumatic Tube blue Ø 4 x 800 mm | |
| 161-655-072 | Ec-Motor CAN | |
| 161-655-587 | Adapter Lead | |
| 161-660-101 | Hall-Sensor B332 | |
| 161-660-102 | Hall-Sensor B333 | |
| 161-660-103 | Hall-Sensor B334 | |
| 161-660-104 | Hall-Sensor B335 | |
| 161-660-105 | Hall-Sensor B336 | |
| 161-660-106 | Hall-Sensor B337 | |

American **Suessen** Corporation

ACO SE-20

| <u>9 Digit Nr.</u> | <u>Description</u> | <u>Other Numbers</u> |
|--------------------|--------------------|----------------------|
| 161-660-108 | Hall-Sensor B339 | |
| 161-660-109 | Hall-Sensor B352 | |
| 161-660-110 | Hall-Sensor B353 | |
| 161-660-111 | Hall-Sensor B354 | |
| 161-660-112 | Hall-Sensor B355 | |
| 161-660-113 | Hall-Sensor B356 | |
| 161-660-114 | Hall-Sensor B357 | |
| 161-660-116 | Hall-Sensor B359 | |
| 161-660-117 | Hall-Sensor B412 | |
| 161-660-118 | Hall-Sensor B413 | |

| <u>9 Digit Nr.</u> | <u>Description</u> | <u>Other Numbers</u> |
|--------------------|--------------------|----------------------|
| 161-660-119 | Hall-Sensor B414 | |
| 161-660-121 | Hall-Sensor B416 | |
| 161-660-122 | Hall-Sensor B417 | |
| 161-660-123 | Hall-Sensor B418 | |
| 161-660-124 | Hall-Sensor B419 | |
| 161-660-125 | Hall-Sensor B374 | |
| 161-660-126 | Hall-Sensor B375 | |
| 161-660-127 | Hall-Sensor B376 | |
| 161-660-128 | Hall-Sensor B377 | |
| 161-660-129 | Hall-Sensor B338 | |

Rotors SE-20 (direct drive)



| Type | Part No. | Type | Part No. | Type | Part No. |
|------------|-----------------|-----------|-----------------|----------|-----------------|
| T 633 BD** | 11204149 | G 628 BD | 11204051 | K 631 | 11204048 |
| T 634 BD** | 11238003 | G 630 BD | 11203934 | | |
| T 636 BD | 11204295 | G 631 BD | 11257227 | U 640 BD | 11205095 |
| T 640 BD | 11204463 | G 6633 BD | 11210484 | U 646 BD | 11205132 |
| T 646 BD | 11204529 | G 633 B | 11284403 | | |
| T 646 B | 11288706 | G 636 BD | 11200860 | S 652 DN | 11247684 |
| | | G 636 B | 11248852 | | |
| TT 636 BD | 11246695 | G 640 BD | 11203851 | | |
| TT 640 BD | 11247404 | | | | |
| TT646 BD | 11247294 | GL 628 BD | 11246841 | | |
| | | GL 631 BD | 11247142 | | |
| | | | | | |
| | | | | | |

**Requires 1.5 mm washer

Please contact your Sales Representative for other specialty types.

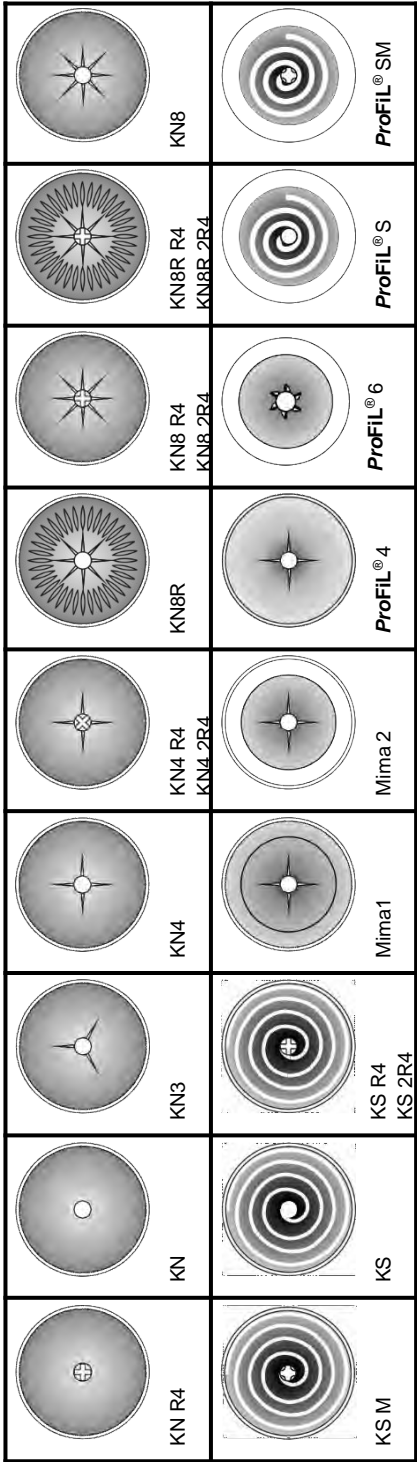
Solindrings



| Type | Part Number | Type | Part Number |
|--------------|-------------|-------------|-------------|
| B 174 N | 9583894 | S 21 N | 9579299 |
| B 174 DN | 9583895 | S 21 DN | 9579485 |
| B 174 CR | 10232544 | S 21 DN- FG | 9586806 |
| B 174 DN-FG | 9586802 | S 22 P | 9579481 |
| B 174-4.8 N | 9581044 | S 25 DN | 9595748 |
| B 174-4.8 DN | 9581046 | S 43-3.6 N | 10414980 |
| B 187 DN | 9586803 | S 43-3.6 DN | 10231503 |
| B 20 N | 9586804 | | |
| B 20 DN | 9585010 | | |
| B 20 CR | 10523556 | | |

Navels

| Type | Part No. (Magnet) SE-10/11/12/20 |
|------------------|-------------------------------------|
| KN | 10231648 |
| KN R4 | 10231716 |
| KN 4 | 10659948 |
| <i>ProFil</i> 4 | 10231719 |
| KN3 | 10231717 |
| KN 4 R4 | 10671550 |
| KN 4 2R4 | 10670765 |
| <i>ProFil</i> 6 | 10494908 |
| KN 8 | 10231720 |
| KN 8R | 10231726 |
| KN 8 R4 | 10231723 |
| KN 8R R4 | 10231727 |
| KN 8 2R4 | 10231724 |
| KN 8R 2R4 | 10231731 |
| KS | 10231732 |
| <i>ProFil</i> S | 10433628 |
| KS R4 | 10231733 |
| KS M | 10231745 |
| KS 2R4 | 10231735 |
| <i>ProFil</i> SM | 10507842 |
| KSK6 | 1134905 |
| MIMA 2 | 10739203 |



10400808
Aluminum
Washer for
Magnetic Navel
1.5mm



9576246
Washer for
Magnetic
Navel 1.5mm



9591393
Washer for
Navel
16 x 10.3 x 1



2220029
Washer for
Navel
16 x 10.3 x 0.5

Trash & Doffer Belts



| Conveyor (Doffer) Belt SE-20 ACO 8/9 | Suessen Part Number | Conveyor (Doffer) Belt SE-20 ACO 8/9 | Suessen Part Number |
|---------------------------------------|---------------------|---------------------------------------|---------------------|
| Doffer Belt 124mm x 91624mm 360 pos. | 2894223 | Doffer Belt 124mm x 102912mm 408 pos | 2894380 |
| Doffer Belt 124mm x 113918mm 456 pos. | 2894386 | Doffer Belt 124mm x 149503mm 600 pos. | 2894379 |
| | | | |
| Trash Belts SE-20 ACO 8/9 | Suessen Part Number | Trash Belts SE-20 ACO 8/9 | Suessen Part Number |
| Trash Belt 100mm x 41488mm 168 pos. | 2820600 | Trash Belt 100mm x 97365mm 408 pos. | 10980297 |
| Trash Belt 100mm x 75014mm 312 pos. | 2820606 | Trash Belt 100mm x 114128mm 480 pos. | 10980298 |
| Trash Belt 100mm x 80602mm 336 pos. | 2820607 | Trash Belt 100mm x 147361mm 624 pos. | 2820610 |
| Trash Belt 100mm x 86190mm 360 pos. | 2820608 | Trash Belt 95mm x 141785mm 600 pos. | 2820613 |

Please check belt length before ordering.

NOTE: All sizes of Doffer Belts, Trash Belts, and Tube Conveyor Belts are listed on pages A-18 through A-21.

Bräcker Rolsprint

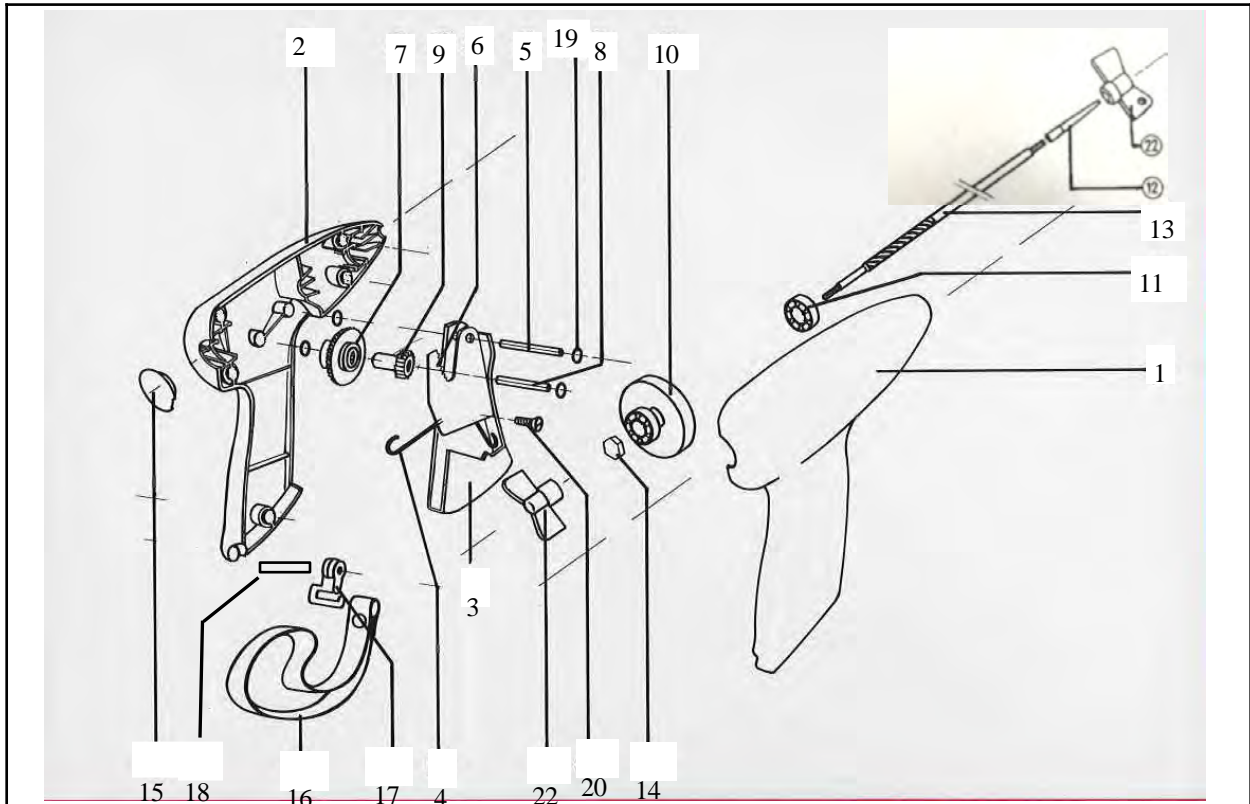
Rolsprints Complete

| Type | Spindle Length | ASC Part Number |
|---------------------------|----------------|-----------------|
| Rolsprint WITH spindle | 200 mm | 0682604 |
| | 315 mm | 0682606 |
| | 400 mm | 0682608 |
| | 500 mm | 0682610 |
| | 800 mm | 0682611 |
| Rolsprint WITHOUT spindle | N/A | 0682602 |

NOTE: Please use "0" when inputting ASC part number.



Bräcker Rolsprint



| Position | Description | ASC Part Number | Position | Description | ASC Part Number |
|----------|--------------------------|-----------------|----------|-------------------------|-----------------|
| 1 | Housing right | 0682620 | 13 | Spindle 400 mm | 0682638 |
| 2 | Housing left | 0682621 | 13 | Spindle 500 mm | 0682639 |
| 3 | Trigger | 0682622 | 13 | Spindle 800 mm | 0682651 |
| 4 | Spring | 0682630 | 14 | Nut | 0682640 |
| 5 | Axle | 0682631 | 15 | Plug | 0682625 |
| 6 | Sector Gear | 0682632 | 16 | Loop incl. clips | 0682641 |
| 7 | Geared Wheel Assembly | 0682623 | 17 | Loop clips only | |
| 8 | Free Wheel Axle | 0682633 | 18 | Bolt | 0682642 |
| 9 | Driving Gear | 0682634 | 19 | Spring Washer | 0682643 |
| 10 | Fly wheel w/ball-bearing | 0682624 | 20 | Screw | 0682644 |
| 11 | Ball Bearing | 0682635 | 21 | Self tapping screw | 0682554 |
| 12 | Interchangeable Tip | 0682521 | 22 | Spanner | 0682627 |
| 13 | Spindle 200 mm | 0682636 | 23 | Lockwasher (1,000 pcs.) | 0682648 |
| 13 | Spindle 315 mm | 0682637 | | | |

NOTE: Please use "0" when inputting ASC part number.

Grease



| Description | Suessen Part Number | Description | Suessen Part Number |
|---|---------------------|---|---------------------|
| Staburags NBU 12/300 KP Grease (1kg container) | 1730001 | Isoflex Topas L 152 Grease (1kg container) | 1730017 |
| Staburags NBU 12/300 KP Grease (400g cartridge) | 1730002 | Isoflex Topas L 152 Grease (370g cartridge) | 1730012 |
| Isoflex NBU 15 Grease (1kg container) | 1730006 | Staburags NBU 4 Grease (1kg container) | 1730021 |
| Isoflex NBU 15 Grease (400g cartridge) | 1730007 | Staburags NBU 8 EP Grease (1kg container) | 1730022 |
| Isoflex LDS18 SPECIAL A Grease (1kg container) | 1730010 | Klueberquiet BQH 72-102 Grease (1kg container) | 1730005 |
| Isoflex Grease LDS18 SPECIAL A (400g cartridge) | 1730013 | Klueberquiet BQH 72-102 Grease (400g cartridge) | 1730009 |
| <p>Other Klüber greases available upon request. Greases are also available in cartridges. Please inquire to your Sales Representative.</p> | | | |

Electrical & Pneumatic

German Made Hand Tools



Please visit www.wiha.com to find any tool you are needing.
Wiha prices are ASC prices.



Shipping Address:

**American Suessen Corporation
11600 Goodrich Drive
Charlotte, NC 28273**

Tel: 704/588-2365

Fax: 704/588-3945

: orders@americansuessen.com

Hours: Mon.-Fri. 8:30am to 5:00pm

www.americansuessen.com