

American
Suessen



ACO
Parts
Catalogue

American **SUESSEN** Corporation

www.americansuessen.com

ASC offers many more parts than those shown in this catalogue. Please visit our webpage and look at our complete parts list. Use CTRL+F to search our inventory by ASC part number, description, or other manufacturers' part numbers.

Telephone: 704/588-2365
Fax: 704/588-3945
E-mail: orders@americansuessen.com

SUESSEN BRACKER NOVIBRA IFGI/Asota Fibers

Click on the logo of one of the four companies we represent to get in-depth technical information and the latest news.

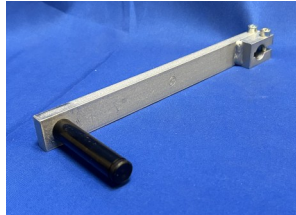
For assistance, please call your Sales Representative or our office.

American **Suessen** Corporation

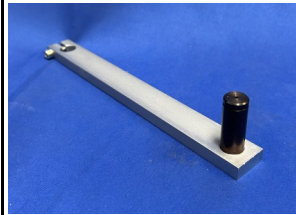
ACO SE-20



2894303
Yarn Guide Lever
161003191



2894292
Locking Lever
161000662



2894293
Locking Lever
161000666



2894317
Cpl. Pneumatic
Cylinder 12x80
161006111



2893813
Opener Arm
161007555



2893960
Opener Arm
Position 37
161004227



2893801
Pinion Shaft
161004899



2894195
Plastic Scraper Blade
161008378



2894299
Latch -Left-
161002688



2894300
Latch -Right-
161002689



2893804
Toothed Wheel
161004898



2880965
O-Ring 16 x 7
836460254



2894291
Worm Bolt
161000071



2894304
Bracket
161003198




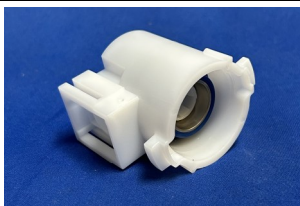














2894305
Torsion Spring
161003351



2893803
Opening Assembly
Housing
161010983

American **Suessen** Corporation

ACO SE-20

 <p>2894307 Snap Spring 161004176</p>	 <p>2894164 Cylinder Cover Cpl. 161009380 161007584</p>	 <p>2894309 Spring Strap 161004961</p>	 <p>2894310 Cpl. Cleaner 161005123</p>
 <p>2894311 Holding Plate LH 161005124</p>	 <p>2894312 Holding Plate RH 161005125</p>	 <p>2894478 Flap ACO 161001522</p>	 <p>2894337 Cleaner Cpl. 161012648</p>
 <p>2893961 Sensor B337 161660106</p>	 <p>2894316 Torsion Spring 161005836</p>	 <p>2894294 Toothed Segment 161000682</p>	 <p>2820298 Air Filter 161006321</p>
 <p>2894318 Yarn Guide Roller 161006341</p>	 <p>2894319 Pinion Shaft T=27 161006353</p>	 <p>2894320 Yarn Guide Roller 161006705</p>	 <p>2820507 Ceramic Pin 161001918 117034772</p>

American **Suessen** Corporation

ACO SE-20

			
<p>2894321 Drive Shaft LH (770 mm length) 161006886</p>	<p>2894322 Drive Shaft RH 161006887</p>	<p>2880997 Shield 161009158 161006342</p>	<p>2882044 Hook 161008012</p>
			
<p>2885000 Suction Nozzle Belt ACO 161009759</p>	<p>2884194 Bridge Handle 161006670 139003840</p>	<p>2893780 Cradle Shock Absorber cpl. w/magnet 161010118</p>	<p>2893788 Drive Shaft (1288 mm long) 161000400</p>
			
<p>2893791 Tube Protector RH 161000238</p>	<p>2893792 Tube Protector LH 161000223</p>	<p>2893793 Pressure Spring (435 mm long) 161003029</p>	<p>2893794 Roller (25 mm O.D. x 27.5 mm) 161004553</p>
			
<p>2893795 Bearing Bolt 161004552</p>	<p>2893796 Bearing Bolt 161010660</p>	<p>2893797 Cylinder Bracket 161010804</p>	<p>2894301 Toothed Belt 60-S2M-320 161002878</p>

American **Suessen** Corporation

ACO SE-20

 <p>2893799 Spur-Toothed Conic Wheel 161001293</p>	 <p>2893800 Spur-Toothed Conic Wheel 161001292</p>	 <p>2893802 Housing Cover 161004892</p>	 <p>2894170 Roller Holder 161005478</p>
 <p>2894409 Pneumatic Cylinder Cpl. 20x185 161007622</p>	 <p>2893805 Sheet Plate 161003741</p>	 <p>2893806 Spacer Bolt 161003294</p>	 <p>2893807 Supporting Plate 161004830</p>
 <p>2894104 Cylinder D12-H14 161013097</p>	 <p>2894183 Fan Wheel D=488 161001716</p>	 <p>2894295 Toothed Belt 100-S2M-500 161001092</p>	 <p>2893815 Slide 161011048</p>
 <p>2893816 Way Valve 3/2 161008247</p>	 <p>2894296 Intermediate Piece 161001287</p>	 <p>2893818 Bearing Shaft 161006883</p>	 <p>2894169 Protecting Cap 161000903</p>

American **Suessen** Corporation

ACO SE-20

A white plastic adapter with a central hole and a small magnet on the back, shown from two angles.	A white plastic adapter with a central hole, shown from two angles.	A white plastic adapter plate with a central hole and a metal component on the back, shown from two angles.	A white plastic adapter plate with a central hole and a metal component on the back, shown from two angles.
2894101 Adapter HO (w/magnet) 161000058	2894102 Adapter RH 161000063	2893811 Adapter Plate Cpl. LH 161000141	2893812 Adapter Plate RH Cpl. 161005229
A small electronic component with two wires (one blue, one yellow) attached to a white plastic base.	A white plastic component with a curved, hook-like shape.	A metal leaf spring with a white plastic component attached to one end.	A white plastic component with a central hole and a small protrusion.
2893817 Yarn Preparation 161008554	2893828 Pre-Condenser White 161001101	2894313 Leaf Spring 161005601	2894306 Holder 161003956
A red pneumatic tube with a curved shape and a small protrusion at one end.	A yellow pneumatic tube with a curved shape and a small protrusion at one end.	A green pneumatic tube with a curved shape and a small protrusion at one end.	A black pneumatic tube with a curved shape and a small protrusion at one end.
2894138 Pneumatic Tube Red 4x300mm 161340613	2894135 Pneumatic Tube Yellow 4x500mm 161340614	2894136 Pneumatic Tube Green 4x400mm 161340615	2894137 Pneumatic Tube Black 4x650mm 161340616
A black protective cover with a curved shape and a small protrusion.	A yellow insert with a curved shape and a small protrusion.	A yellow cover with a curved shape and a small protrusion.	A white hood with a curved shape and a small protrusion.
2894308 Protective Cover Black 161004646	2893826 Insert (yellow) 161000775	2893827 Cover 161000774	2894160 Hood 161000776

American **Suessen** Corporation

ACO SE-20

 <p>2894188 Bolt 161001635</p>	 <p>2894411 Hall Sensor B332 161660101</p>	 <p>2894298 Toothed Belt 60-S3M-384 161002158</p>	 <p>2894218 Cradle Cylinder 161007419/161000133 161007236/161011515</p>
 <p>2894219 Take-up Cylinder 161007415/161007230 161006976/161004750</p>	 <p>2894323 Cap 161007295</p>	 <p>2894220 Cylinder 161007414/161007229 161006819/161004766 161003263/161001933</p>	 <p>2894234 L-Plug Connection 8mm-4mm 166003834</p>
 <p>2894325 Leaf Spring 161007457</p>	 <p>2894326 Jointed Head 161007468</p>	 <p>2894328 Bridge Handle 161007595</p>	 <p>2894297 Clamping Bolt 161001288</p>
 <p>2894331 Deflection Pulley 161008256</p>	 <p>2894332 Roller Holder 161008294</p>	 <p>2894333 Wire Sensor 161008777</p>	 <p>2894334 Coupling Plate 161009498</p>

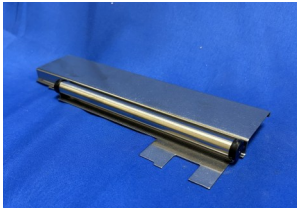
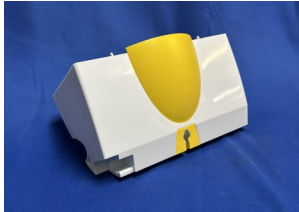
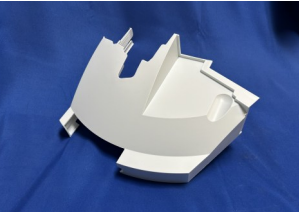
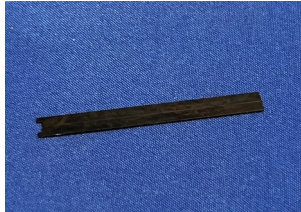
American **Suessen** Corporation

ACO SE-20

 <p>2894335 Spinning Position Cover 161009602</p>	 <p>2894336 Seal only 161012132 139005493</p>	 <p>2894314 Guide Plate 161005680</p>	 <p>2894338 Cradle Shock Absorber w/Magnet cpl. 161012699</p>
 <p>2894339 Valve 24...36V 29.3...44mA 100% ED 161013659</p>	 <p>2894359 Hall-Sensor B4 18 161660123</p>	 <p>2894363 Splice Pipe 161011498</p>	 <p>2894387 Toothed Belt 100 S2M 500 161012808 161001092</p>
 <p>2894391 Insert Black 161008860</p>	 <p>2894395 Flat Head Screw M8x16 161003925</p>	 <p>2894400 Spring 161000670</p>	 <p>2894401 Angle Plate Pos. 69 161002071</p>
 <p>2894402 Sustainer 161008168 161008735</p>	 <p>2894405 Package Carrier 161008738</p>	 <p>2894406 Spacer Plate 161007509</p>	 <p>2894302 Torsion Spring 161002940</p>

American **Suessen** Corporation

ACO SE-20

 <p>2880964 Plug 161006214</p>	 <p>2894494 Cover (Black) ACO 161008859</p>	 <p>2894451 Flanges Pulley 161006872</p>	 <p>2894450 Covering Plate Cpl. 161009564 161004331</p>
 <p>2894448 Cpl. Hood Insert and Cover Yellow 161000777</p>	 <p>2894447 Spinning Position Cover ACO 161007287 161006693</p>	 <p>2894259 Leaf Spring 139005275</p>	 <p>2894324 Bearing 161007311</p>
 <p>2894327 Draw-off Tube 161007576</p>	 <p>2894330-2 Intake Motor without tip 161008040 161012260</p>	<p>2894449 Cover ACO 161010261</p>	

American **Suessen** Corporation

ACO SE-20

<u>9 Digit Nr.</u>	<u>Description</u>	<u>Other Numbers</u>
161-000-058	Adapter Plate lh. cyl. 42x54	
161-000-063	Adapter Plate rh. cyl. 54	
161-000-071	Worm bolt	
161-000-097	Distance Plate 1,0mm	
161-000-141	Cpl. Adapter Plate lh.	
161-000-223	Tube Protector LH	
161-000-238	Tube Protector RH	
161-000-242	Scissors Blade Steel	
161-000-323	Guide metal sheet	
161-000-393	Distance sleeve	
161-000-394	Distance sleeve	
161-000-400	Drive Shaft	
161-000-401	Spacer Tube	
161-000-449	V-Belt Pulley Z=60	
161-000-535	V-Belt Pulley Z=28	
161-000-563	Holding plate	
161-000-570	V-belt pulley Z=60	
161-000-596	Spacer bushing	
161-000-597	Spacer bushing	
161-000-662	Locking Lever	
161-000-666	Locking Lever	
161-000-669	Slide bushing	
161-000-670	Cylindrical torsion spring	
161-000-679	Shaft	
161-000-682	Toothed Segment	
161-000-704	Scissors Blade Steel	
161-000-771	Membrane	
161-000-774	Cover	161-008-859
161-000-775	Insert yellow	
161-000-776	Hood	
161-000-777	Cpl. Hood	
161-000-807	Bll Pivot	
161-000-824	Sensor bracket	
161-000-831	Pressure Spring	
161-000-871	Bolt	
161-000-884	Cot 19x35x18,3mm J-490-A Gray	
161-000-903	Protecting Cap	
161-000-904	Lever	
161-000-913	Spacer bushing	
161-000-985	Bracing plate	

<u>9 Digit Nr.</u>	<u>Description</u>	<u>Other Numbers</u>
161-001-033	Bearing	
161-001-092	Toothed Belt 100 S2M 500	161-012-808
161-001-110	Track Roller lid	
161-001-126	Initiator plate	
161-001-128	Cone/sleeve buffer	
161-001-161	Cpl. Pneumatic Cylinder 10 x 10	
161-001-274	Draw Spring	
161-001-287	Intermediate piece	
161-001-288	Clamping bolt	
161-001-292	Spur-toothed conic wheel	
161-001-293	Spur-toothed conic wheel	
161-001-294	Drive shaft	
161-001-296	Bearing housing	
161-001-299	Housing Cover	
161-001-303	Spacer bushing	
161-001-305	Supporting angle	
161-001-311	Bearing flange	
161-001-313	Cpl.Pull Rod	
161-001-324	Shaft	
161-001-326	Spur-toothed conic	
161-001-327	Bearing plate	
161-001-329	Lever	
161-001-333	Bolt	
161-001-346	Centering Bolt	
161-001-363	Scissors support	
161-001-424	Clip	
161-001-496	Track roller axle	
161-001-519	Holding Plate	
161-001-522	Cleaner	
161-001-597	Guide Rod	
161-001-631	Roller carrier	
161-001-635	Bolt	
161-001-639	Belt cover	
161-001-675	Supporting angle 1	
161-001-676	Supporting angle 2	
161-001-678	Supporting angle 3	
161-001-716	Fan Wheel D=488	
161-001-770	Eccentric stop	
161-001-778	Lubrication strip	
161-001-824	Lever RH	

American **Suessen** Corporation

ACO SE-20

<u>9 Digit Nr.</u>	<u>Description</u>	<u>Other Numbers</u>
161-001-825	Lever LH	
161-001-889	Sensor bracket	
161-001-918	Ceramic Pim	117-034-772
161-001-928	Bolt	
161-001-929	Bearing bush	
161-001-930	Adapter	
161-001-932	Locking bolt	
=E2:G45161-001-996	Fixed Choke 0,5mm	
161-002-016	Head plate	161-005-811
161-002-065	Magnet holder	
161-002-067	Rod	
161-002-071	Plate angle	
161-002-073	Distance plate	
161-002-074	Spacer Bushing	
161-002-075	Hood	
161-002-080	Sensor plate	
161-002-083	Sensor bracket	
161-002-084	Clamping plate	
161-002-091	Bolt	
161-002-093	Beam	
161-002-103	Locking plate	
161-002-106	Elbow	
161-002-107	Chain Holder	
161-002-109	Elbow	
161-002-120	Spring	
161-002-123	Spacer Tube	
161-002-124	Clamp	
161-002-127	Sensor bracket	
161-002-128	Sensor bracket	
161-002-131	Bolt	
161-002-141	Lever	
161-002-145	Eccentric bolt	
161-002-156	Bearing Flange	
161-002-158	Toothed Belt 60 S3M 384	
161-002-159	Bolt 8	
161-002-160	Limit stop-bottom	
161-002-162	Limit Stop Top	
161-002-176	Bolt 6	
161-002-180	Angle plate	
161-002-181	Lateral bearing flange	

<u>9 Digit Nr.</u>	<u>Description</u>	<u>Other Numbers</u>
161-002-182	Bearing flange	
161-002-216	Bearing bolt	
161-002-231	Spacer bushing	
161-002-235	Bolt	
161-002-236	Cylindrical torsion spring	
161-002-243	Draw Spring	
161-002-244	Bushing	
161-002-265	Starter shaft	
161-002-266	Spring bolt	
161-002-279	Brake Plate	
161-002-281	Thrust Roller	
161-002-284	Spacer strap	
161-002-313	Stop bow	
161-002-316	Cover Drive	
161-002-318	Bolt	
161-002-361	Plug Angle	
161-002-364	Cover	
161-002-375	Flat steel	
161-002-376	Holding plate	
161-002-379	Intermediate Lever	
161-002-386	Spacer bushing	
161-002-396	Cylindrical torsion spring	
161-002-471	Spindle	
161-002-473	Yarn Guide Wire	
161-002-475	Bearing bolt	
161-002-476	Spacer bolt	
161-002-477	Gear Plate	
161-002-478	Distribution tube	
161-002-481	Special screw	
161-002-482	Mounting flange	
161-002-483	Toothed Wheel Z=30	
161-002-485	Axle	
161-002-490	Spur roller bolt	
161-002-492	Elbow	
161-002-495	Distance ring	
161-002-497	Intermediate Wheel	
161-002-512	Bearing Bush	
161-002-538	Bearing Housing	
161-002-540	V-belt pulley 60 150 S5M	
161-002-541	V-belt pulley 60 150 S5M	

American **Suessen** Corporation

ACO SE-20

<u>9 Digit Nr.</u>	<u>Description</u>	<u>Other Numbers</u>
161-002-544	Shaft	
161-002-575	Shaft	
161-002-606	Stop bracket	
161-002-688	Latch LH	
161-002-689	Latch RH	
161-002-740	Bearing Profile	
161-010-261	Cover	
161-010-624	Bolt	161-002-747
161-010-660	Bearing Bolt	
161-002-749	Bearing Flange	
161-002-750	Spring bolt	
161-002-752	Limit stop	
161-002-766	Hooked strip	
161-002-786	Stabilizer	
161-002-791	Package depositor shaft	
161-002-797	Cylindrical roller	
161-002-798	Large taper roller	
161-002-799	Small taper roller	
161-002-805	Sliding Film	
161-002-841	Brake Shoe	
161-002-843	Pressure Spring	
161-002-869	Stop bush	
161-002-870	Spiral Hose lenght: 540mm	
161-002-871	Hose Clip	
161-002-878	Toothed Belt 60 S2M 320	
161-002-885	Limit Stop, RH	
161-002-887	Limit Stop, LH	
161-002-889	Spring bushing	
161-002-897	Axle 6	
161-002-898	Sensor bracket	
161-002-900	Axle 6	
161-002-913	Eccentric bolt	
161-002-919	Spacer bolt	
161-002-921	Axle	
161-002-928	Bolt	
161-002-931	Axle	
161-002-933	Clamping block	
161-002-940	Torsion Spring	
161-002-989	Reversal Plate 2	
161-002-990	Reversal Plate	

<u>9 Digit Nr.</u>	<u>Description</u>	<u>Other Numbers</u>
161-002-994	Gas Spring	
161-003-020	Sensor Bracket	
161-003-028	Bearing bolt	
161-003-029	Pressure Spring	
161-003-030	Deflection pulley	
161-003-032	Bearing shaft	
161-003-033	Guiding element	
161-003-034	Bracket bottom	
161-003-035	Strap	
161-003-037	Eccentric bolt	
161-003-038	Washer 2mm	
161-003-039	Clamping piece	
161-003-041	Covering plate	
161-003-044	Spacer block	
161-003-047	Spacer block	
161-003-063	Cleaning Window Top	161-002-165
161-003-064	Cleaning Window Bottom	161-002-164
161-003-106	Washer	
161-003-110	Bearing bolt	
161-003-111	Bearing bush	
161-003-118	Brake Plate	
161-003-119	Spherical washer	
161-003-123	Spur roller bolt	
161-003-129	Cover	
161-003-191	Yarn Guide Lever	
161-003-198	Bracket	161-011-006/161-011-007
161-003-203	Adapter Plate lh. cyl.	
161-003-204	Cpl. Adapter Plate lh. cyl.	
161-003-220	Cover	
161-003-221	Cover	
161-003-258	Ball pivot	
161-003-276	Bolt Cylinder	
161-003-279	Drive Wheel Body	
161-003-280	Toothed Wheel Z=87	
161-003-281	Pressure Flange	
161-003-294	Spacer bolt	
161-003-299	Pneumatic Cylinder 32x100	
161-003-302	Roller	
161-003-342	Holding Plate	
161-003-343	Bracket	

American **Suessen** Corporation

ACO SE-20

<u>9 Digit Nr.</u>	<u>Description</u>	<u>Other Numbers</u>
161-003-351	Torsion Spring	
161-003-358	Cylinder bracket	
161-003-360	Sensor plate	
161-003-362	Swivelling lever	
161-003-368	Pulley	
161-003-430	Bracing LH	
161-003-431	Bracing RH	
161-003-490	Spacer block	
161-003-506	Holding plate	
161-003-509	Bearing	
161-003-513	Cylindrical torsion spring	
161-003-514	Axle	
161-003-535	Sensor bracket	
161-003-586	Flange 44	
161-003-607	Deflection Roller	
161-003-608	Bushing	
161-003-671	Cpl. Pneumatic Cylinder 12 x 10	
161-003-677	Swivelling fastening	161-003-341
161-003-704	Spacer tube	
161-003-705	Supporting angle	
161-003-719	V-Belt Pulley	139-003-917
161-003-730	Bolt M4-M4	
161-003-741	Sheet plate	
161-003-744	Funnel	161-001-763
161-003-746	Quick-venting valve	
161-003-793	Purger	
161-003-831	Limit stop	
161-003-925	Flat Head Screw M8x16	
161-003-934	Starting Disc	161-003-205
161-003-942	Tension Spring	
161-003-951	Bearing screw	
161-003-956	Holder	161-002-186
161-003-969	Cleaning window-top	161-002-165
161-003-980	Cradle stop	
161-003-984	Limit Stop	
161-004-018	Slide	
161-004-022	Tube 400mm	
161-004-031	Fastening angle	
161-004-032	Fastening angle	
161-004-053	Laufrolle	161-012-784

<u>9 Digit Nr.</u>	<u>Description</u>	<u>Other Numbers</u>
161-004-054	Spur roller bolt	
161-004-055	Spur roller bolt	
161-004-065	Cradle stop	
161-004-095	Bushing	
161-004-097	Stop bolt	
161-004-123	Yarn Support Wire	
161-004-152	Guide Wire	
161-004-165	Cross Brace	
161-004-167	Casterroll	
161-004-176	Snap spring	
161-004-216	Lever	161-002-769
161-004-219	Switch Lever	
161-004-227	Opener arm	161-004-028
161-004-230	Opener shaft	161-002-146
161-004-244	Lever	161-001-695
161-004-255	Yarn Guide Roller w/o Bearing	161-000-019
161-004-257	Threaded Connection	
161-004-287	Flap	161-003-512
161-004-315	Seal	
161-004-316	Nozzle Ring	
161-004-327	Nozzle Ring 0,3mm	
161-004-330	Cpl. Pneumatic Cylinder 16x100	
161-004-397	Carrier plate	
161-004-400	Sensor bracket	
161-004-406	Clamping piece	
161-004-407	Sheet plate	
161-004-423	Nozzle Ring 1,2	
161-004-424	Cpl. Pneumatic Cylinder 32x100	161-003-298
161-004-478	Cover	161-004-177
161-004-499	Take-up bracket	
161-004-519	Pivot strap	
161-004-552	Bearing bolt	
161-004-553	Roller	
161-004-646	Protective Cover black	
161-004-718	Holding plate	
161-004-719	Buttom part	
161-004-767	Pipe	
161-004-770	Fastening angle	
161-004-791	Rotor Chamber	
161-004-818	Bushing 6mm	161-003-031

American **Suessen** Corporation

ACO SE-20

<u>9 Digit Nr.</u>	<u>Description</u>	<u>Other Numbers</u>
161-004-830	Supporting plate	
161-004-882	Housing	161-001-322
161-004-885	Lever	161-001-330
161-004-887	Washer	
161-004-892	Housing Cover	161-001-289
161-004-896	Shaft	161-001-283
161-004-897	Spacer bushing	161-000-913
161-004-898	Toothed Wheel	161-001-285
161-004-899	Pinion Shaft	161-001-286
161-004-900	Toothed Wheel	161-001-284
161-004-901	Support Arm	161-001-341
161-004-906	Strut	161-002-424
161-004-908	Covering plate	161-001-347
161-004-909	Shield	161-001-174
161-004-913	Spacer bushing	
161-004-942	Switching Plate	161-002-269
161-004-957	Depositor arm LH	161-001-266
161-004-959	Depositor arm RH	161-001-263
161-004-961	Spring Strap	
161-004-964	Opener roll	161-002-819
161-005-000	Cradle bearing axle	
161-005-039	Lowering lever	161-002-746
161-005-041	Bolt	161-001-226
161-005-104	Cleaning window	
161-005-123	Cpl. Cleaner	
161-005-124	Holding Plate	161-001-519
161-005-125	Holding Plate	161-001-520
161-005-148	Cylinder D12-H14	161-006-795/161-007-422/161-011-516/161-007-253/161-013-097
161-005-229	Cpl. Adapter Plate rh. cyl. 54	161-000-140
161-005-255	Damper axle	161-000-111
161-005-257	Retainer	161-004-002
161-005-319	Compansating lever	161-004-999

<u>9 Digit Nr.</u>	<u>Description</u>	<u>Other Numbers</u>
161-005-405	Pneumatic Clutch F	
161-005-406	Pneumatic Clutch M	
161-005-437	Retainer Lever	161-002-947
161-005-478	Roller Holder	
161-005-530	Slide Plate LH	161-001-212
161-005-532	Slide Plate RH	161-001-210
161-005-533	Axle	
161-005-534	Torsion Spring	161-002-890
161-005-552	Clamping Lever	
161-005-563	Flap	161-002-888
161-005-580	Strut	
161-005-601	Leaf Spring	161-002-000
161-005-651	Spherical Disc	
161-005-652	Gripper Prism	161-002-771
161-005-680	Guide Plate	
161-005-701	Fixed Choke dia. 0,1mm	
161-005-707	Leaf Spring 0,4mm	
161-005-714	Locking Lever	161-001-434
161-005-715	Cover	
161-005-716	Stay Bolt	
161-005-728	Tension Pulley	
161-005-749	Cleaning Brush	
161-005-761	Brake Lever	161-002-939
161-005-764	Guide Plate	161-002-867
161-005-787	Opener Arm	161-002-868/161-007-437/188-002-129
161-005-793	Sliding Piece	161-004-769
161-005-836	Torsion Spring	161-003-296
161-005-944	Cover	161-004-820
161-005-954	Guide Rail TLC18-290	
161-005-955	Guide Rail ULC18-1120	
161-005-956	Guide Rail TLC18-1200	
161-005-988	Brush Shaft	161-004-626

American **Suessen** Corporation

ACO SE-20

<u>9 Digit Nr.</u>	<u>Description</u>	<u>Other Numbers</u>
161-005-997	Tension Short	
161-006-050	Deflection Pulley	161-005-205
161-006-103	Foot	
161-006-111	Cpl. Pneumatic Cylinder 12x80	
161-006-131	Limit Stop	139-010-994/139-003-831
161-006-152	Cpl. Stripping Roller 19x35x18,3mm J-490-A Gray	161-012-041/161-001-959
161-006-162	Sensor Bracket	161-003-018
161-006-164	Sliding Piece	
161-006-196	Short-Stroke Cylinder 6x15	
161-006-259	Slide RH	
161-006-261	Slide LH	
161-006-286	Roll-Off Plate	161-005-527/161-001-216
161-006-307	Bearing Bolt	161-004-549
161-006-308	Roller Holder	161-004-550
161-006-314	Distance sleeve	
161-006-321	Air Filter	
161-006-341	Yarn Guide Roller	161-004-254/161-000-896
161-006-353	Pinion Shaft T=27	161-000-680/161-000-681
161-006-361	Mounting strap	
161-006-385	Cross-bar	
161-006-390	Cutter Guide	
161-006-406	Auxiliary Yarn Guide Stepper Motor	
161-006-433	Bearing Shaft	
161-006-435	Bearing Support	
161-006-422	Swivelling Lever	

<u>9 Digit Nr.</u>	<u>Description</u>	<u>Other Numbers</u>
161-006-449	Lever	161-005-791/161-000-671
161-006-500	Fixed Throttle Ø 0,1mm	
161-006-508	Pressure Control Device	161-005-025
161-006-532	Cylinder 12x25	
161-006-550	Cpl. Swivelling Lever	
161-006-559	Lever	161-002-466
161-006-561	Bushing	161-002-806
161-006-562	Cyl. Torsion Spring	161-002-264
161-006-565	Craddle Opener Carrier	161-004-027/161-001-017
161-006-567	Axialhebel	161-002-811
161-006-657	Toothed Belt Wheel Z=41	161-005-995/117-027-579
161-006-705	Yarn Guide Roller	161-006-336/161-005-751
161-006-777	Bracket	161-004-404
161-006-804	Adapter Plate lh.	
161-006-806	Cpl. Adapter Plate lh.	
161-006-857	Butterfly valve	161-003-600
161-006-865	Motor Plate	161-005-713/161-004-849
161-006-874	Shield	161-006-845, 161-006-534
161-006-883	Bearing Shaft	161-005-993
161-006-885	Toothed Belt Wheel Z=41	161-005-992
161-006-886	Drive Shaft lh.	161-005-848/161-004-861/161-001-573
161-006-887	Drive Shaft rh.	
161-006-942	Stop bush	
161-006-946	Bolzen	161-000-823
161-007-019	Gripper finger	161-004-212/161-002-154

American **Suessen** Corporation

ACO SE-20

<u>9 Digit Nr.</u>	<u>Description</u>	<u>Other Numbers</u>
161-007-081	Shield	161-007-021/161-005-456
161-007-022	Bearing Bolt	161-005-756
161-007-028	Swivelling Bolt	
161-007-032	Spacer Ring Cyl.	
161-007-092	Bracer Ring Bracket	161-003-757
161-007-097	Lever RH	161-007-079/161-006-250/161-001-758
161-007-098	Lever LH	161-007-080/161-006-251/161-001-797
161-007-144	Pressure Pad	161-002-549
161-007-150	Bracket	161-002-545
161-007-162	V-Belt Pulley	161-002-557
161-007-167	Shaft	161-002-539
161-007-198	Mounting angle Storage nozzle	161-003-485
161-007-292	Signal Lamp	

<u>9 Digit Nr.</u>	<u>Description</u>	<u>Other Numbers</u>
161-007-295	Cap	161-001-920
161-007-309	Bearing Flange	161-000-677
161-007-311	Bearing	161-000-688
161-007-440	Bearing Shaft	161-006-853
161-007-414	Take-Up Cylinder	161-007-229/161-006-819/161-004-766/161-003-263/161-001-933/161-011-511/161-013-091
161-007-415	Cylinder Ø15	161-007-230/161-006-976/161-006-036/161-004-750/161-011-513/161-013-092
161-007-419	Cradle Cylinder	161-007-236/161-006-736/161-000-133/161-009-617/161-011-515/161-010-916/161-013-094
161-007-420	Cylinder 25 x 50 HUB	161-007-233/161-006-826/161-003-121
161-007-428	Cylinder 25 x 25 HUB	161-007-240/161-006-797/161-003-164
161-007-439	Opener Arm	161-005-796/161-004-163/161-005-797
161-007-453	Guide Roller - centric	161-003-124
161-007-454	Guide Roller - eccentric	161-003-125
161-007-456	Bearing Bolt	

American **Suessen** Corporation

ACO SE-20

<u>9 Digit Nr.</u>	<u>Description</u>	<u>Other Numbers</u>
161-007-457	Leaf Spring	161-007-024/161-005-708
161-007-468	Joint head	
161-007-469	Piston Rod	
161-007-555	Cpl. Opener Arm	161-005-788/161-005-275/161-003-985
161-007-556	Opener Arm	161-005-789/161-005-276/161-003-986
161-007-576	Draw-off Tube	
161-007-584	Cylinder Cover	
161-007-595	Bridge Handle	161-006-670/139-003-840
161-007-596	Handle	161-006-672/166-007-702
161-007-609	Clip	161-005-486
161-007-622	Cpl. Pneumaticcylinder 20x185	161-004-804
161-007-660	Fibre Channel Seal	
161-007-677	Winding Drum Drive	
161-007-803	Holder	161-003-271
161-007-812	Hinge bolt	161-002-992
161-007-813	Spacer bolt	161-002-993
161-007-840	Motor Plate	
161-007-841	Stay Bolt	
161-007-842	Bushing	
161-007-843	Depositor Arm LH	
161-007-848	Stabilizer	
161-007-849	Package Depositor Shaft	
161-007-852	Bearing	
161-007-874	Guideing element lh.	
161-007-875	Guiding element rh.	
161-007-877	Chain holder	161-001-253
161-007-888	Connecting plate	161-007-372/161-006-505/161-004-935

<u>9 Digit Nr.</u>	<u>Description</u>	<u>Other Numbers</u>
161-007-901	Flat steel	161-001-766
161-007-941	End Angle	
161-007-962	Bearing Cap	161-004-654
161-008-026	Distributor	161-007-914
161-008-040	Intake Motor	161-004-001 / 161-001-163 / 161-012-403 / 161-012-260
161-008-060	Cover only	161-007-464
161-008-157	Oil Container	
161-008-162	Flat Belt 10 x 420 mm	
161-008-168	Sustainer	161-008-735/161-002-033
161-008-254	Auxiliary Yarn Guide Stepper Motor	
161-008-256	Deflection Pulley	161-005-731
161-008-268	Precondenser 12 White	161-001-101
161-008-275	Clip	161-006-128
161-008-294	Roller Holder	
161-008-296	Leaf Spring	
161-008-319	Centering angle	161-004-114
161-008-377	Yarn Guide Roller	161-008-218
161-008-532	Precondenser 8 Blue	161-004-166
161-008-554	Yarn Preparation	161-008-027
161-008-662	Bearing Screw	161-006-225
161-008-637	Cylinder 25 x 50 HUB	161-013-093/161-011-514
161-008-777	Wire Sensor	
161-008-846	Ring	
161-008-860	Insert black	
161-008-866	Cpl. Brush	161-008-865
161-009-158	Cpl. Platine	161-006-342
161-009-205	Limit Stop	

American **Suessen** Corporation

ACO SE-20

<u>9 Digit Nr.</u>	<u>Description</u>	<u>Other Numbers</u>
161-009-380	Cylinder Cover	
161-009-464	Drive Gear	
161-009-498	Coupling plate	161-003-962/161-004-270
161-009-563	Covering Plate	161-005-687/161-002-971/161-001-412
161-009-564	Cpl.Covering Plate	161-005-717/161-004-331
161-009-565	Cpl.Covering Plate	161-006-129
161-009-602	Spinning Position Cover	161-007-286/161-006-371/161-004-233
161-009-603	Spinning Position Cover	161-007-287/161-006-693
161-009-605	Bearing bolt	161-001-906
161-009-670	Clamping Lever	161-003-975/161-002-755
161-009-674	Spacer Ring 1°50	
161-009-769	Bolt	161-003-105
161-009-787	Posicomm bracket LH	161-002-901
161-009-850	Feeder arm	161-002-139/161-004-206
161-009-991	Fastening Element	
161-010-060	Protective Plate	
161-010-062	Posicomm bracket RH	161-002-899
161-010-117	Craddle Shock Absorber without Magnet	161-009-381
161-010-302	Reserve filter	161-003-230
161-010-303	Filter	161-003-232
161-010-304	Filter	161-003-234
161-010-315	Opener bolt	161-004-644/161-001-355

<u>9 Digit Nr.</u>	<u>Description</u>	<u>Other Numbers</u>
161-010-395	Wire Bow	161-002-010
161-010-449	Cylindrical Torsion Spring	161-003-351
161-010-722	Bearing	161-002-968
161-010-723	Thrust bearing	161-002-965
161-010-804	Cylinder bracket	161-006-404/ 161-004-546
161-010-822	Supporting Arm	161-005-440
161-010-859	Opening Lever	
161-010-870	Holding Plate	161-006-382
161-010-889	Sensor Bracket	161-006-224
161-010-983	Opening assembly housing	161-004-889/161-001-278
161-011-037	Holding Plate	161-006-775/161-0004-402
161-011-048	Slide	161-004-169
161-011-309	Sensor bracket	161-004-563
161-011-343	Catch Pocket	161-001-119
161-011-498	Splicer Pipe	161-002-959/ 161-000-706
161-011-564	Depositor Arm LH	
161-011-914	Swivelling Lever	161-010-162, 161-007-030
161-012-004	Cpl. Shield 1°50	161-011-977, 161-009-792
161-012-018	Yarn Shears	161-004-711
161-012-132	Seal	161-007-594/161-007-432
161-012-260	Intake Motor	
161-012-318	Starter arm	161-002-926

American **Suessen** Corporation

ACO SE-20

<u>9 Digit Nr.</u>	<u>Description</u>	<u>Other Numbers</u>
161-012-319	Motor	161-006-279
161-012-322	Motor	161-006-282/161-000-556
161-012-380	Lever	
161-012-485	Valve Unit	161-012-233, 161-011-167, 161-009-172, 161-007-513, 161-005-140
161-012-486	Valve Unit	161-012-234, 161-011-447, 161-011-168, 161-009-173, 161-007-512, 161-004-089
161-012-487	Valve Unit	161-012-235, 161-011-169, 161-010-203, 161-009-338, 161-008-908
161-012-488	Valve Unit	161-012-236, 161-011-448, 161-008-906, 161-008-716
161-012-648	Cpl. Cleaner	161-011-299
161-012-649	Retainer Plate RE	161-011-300
161-012-650	Retainer Plate LH	161-011-301
161-012-651	Cleaner	161-011-302
161-012-699	Cpl. Cradle Shock Absorber with Magnet	161-010-118, 161-008-231, 161-007-717, 161-007-497, 161-006-513, 161-006-239, 161-003-476, 161-008-663
161-013-112	Cpl. Shield Cyl.	161-011-991, 161-011-912, 161-008-295, 161-007-802, 161-007-231, 161-007-082

<u>9 Digit Nr.</u>	<u>Description</u>	<u>Other Numbers</u>
161-013-397	3/2 Way Valve	161-008-248
161-013-420	Mounting Angle	
161-013-597	Spring Strap	
161-013-659	Valve	161-008-230/161-007-470
161-340-308	Tube Conveyor Belt 30 x 47.870mm 192Spl.	
161-340-309	Tube Conveyor Belt 30 x 53.447mm 216Spl.	
161-340-310	Tube Conveyor Belt 30 x 59.023mm 240Spl.	
161-340-311	Tube Conveyor Belt 30 x 64.600mm 264Spl.	
161-340-312	Tube Conveyor Belt 30 x 70.176mm 288Spl.	
161-340-313	Tube Conveyor Belt 30 x 75.753mm 312Spl.	
161-340-314	Tube Conveyor Belt 30 x 81.330mm 336Spl.	
161-340-315	Tube Conveyor Belt 30 x 86.906mm 360Spl.	
161-340-316	Tibe Conveyor Belt 30 x 92.483mm 384Spl.	

American **Suessen** Corporation

ACO SE-20

<u>9 Digit Nr.</u>	<u>Description</u>	<u>Other Numbers</u>
161-340-317	Tube Conveyor Belt 30 x 98.059mm 408Spl.	
161-340-318	Tube Conveyor Belt 30 x 103.636mm 432Spl.	
161-340-319	Tube Conveyor Belt 30 x 109.213mm 456Spl.	
161-340-320	Tube Conveyor Belt 30 x 114.789mm 480Spl.	
161-340-321	Tube Conveyor Belt 30 x 120x366mm 504Spl.	
161-340-322	Tube Conveyor Belt 30 x 125.942mm 528Spl.	
161-340-323	Tube Conveyor Belt 30 x 131.519mm 552Spl.	
161-340-324	Tube Conveyor Belt 30 x 137.096mm 576Spl.	
161-340-325	Tube Conveyor Belt 30 x 142.672mm 600Spl.	
161-340-330	Tube Conveyor Belt 30 x 170.555mm 720Spl.	
161-340-331	Tube Conveyor Belt 30 x 176.132 mm	
161-340-332	Tube Conveyor Belt 30 x 181.708 mm	
161-340-600	Pneumatic Tube Ø 4 mm	
161-340-601	Pneumatic Tube black Ø 4 x 380 mm	
161-340-602	Pneumatic Tube yellow Ø 4 x 450 mm	
161-340-603	Pneumatic Tube blue Ø 4 x 450 mm	
161-340-604	Pneumatic Tube yellow Ø 4 x 750 mm	
161-340-605	Pneumatic Tube black Ø 4 x 50 mm	
161-340-606	Pneumatic Tube black Ø 4 x 500 mm	
161-340-607	Pneumatic Tube yellow Ø 4 x 350 mm	
161-340-608	Pneumatic Tube black Ø 4 x 180 mm	
161-340-609	Pneumatic Tube yellow Ø 4 x 410 mm	
161-340-612	Pneumatic Tube blue Ø 4 x 350 mm	
161-340-613	Pneumatic Tube red Ø 4 x 300 mm	
161-340-614	Pneumatic Tube yellow Ø 4 x 500 mm	
161-340-615	Pneumatic Tube green Ø 4 x 400 mm	

<u>9 Digit Nr.</u>	<u>Description</u>	<u>Other Numbers</u>
161-340-616	Pneumatic Tube black Ø 4 x 650 mm	
161-340-617	Pneumatic Tube black Ø 4 x 1.000 mm	
161-340-619	Pneumatic Tube black Ø 4 x 850 mm	
161-340-620	Pneumatic Tube blue Ø 4 x 210 mm	
161-340-621	Pneumatic Tube red Ø 4 x 160 mm	
161-340-622	Pneumatic Tube yellow Ø 4 x 970 mm	
161-340-623	Pneumatic Tube black Ø 4 x 720 mm	
161-340-624	Pneumatic Tube blue Ø 4 x 570 mm	
161-340-625	Pneumatic Tube black Ø 4 x 1.220 mm	
161-340-626	Pneumatic Tube blue Ø 4 x 290 mm	
161-340-627	Pneumatic Tube red Ø 4 x 200 mm	
161-340-700	Pneumatic Tube Ø 6 mm	
161-340-701	Pneumatic Tube black Ø 6 x 600 mm	
161-340-702	Pneumatic Tube blue Ø 6 x 750 mm	
161-340-703	Pneumatic Tube black Ø 6 x 400 mm	
161-340-704	Pneumatic Tube black Ø 6 x 60 mm	
161-340-705	Pneumatic Tube black Ø 6 x 35 mm	
161-340-706	Pneumatic Tube blue Ø 6 x 500 mm	
161-340-707	Pneumatic Tube black Ø 6 x 500 mm	
161-340-800	Pneumatic Tube black Ø 8 mm	
161-340-801	Pneumatic Tube black Ø 8 x 700 mm	
161-340-808	Pneumatic Tube black Ø 8 x 750 mm	
161-341-801	Doffer Conveyor Belt 124 x 13.284mm 24Spl.	
161-341-802	Doffer Conveyor Belt 124 x 18.857mm 48Spl.	
161-341-803	Doffer Conveyor Belt 124 x 24.431mm 72Spl.	
161-341-804	Doffer Conveyor Belt 124 x 30.004mm 96Spl.	

American **Suessen** Corporation

ACO SE-20

<u>9 Digit Nr.</u>	<u>Description</u>	<u>Other Numbers</u>
161-341-805	Doffer Conveyor Belt 124 x 35.577mm 120Spl.	
161-341-806	Doffer Conveyor Belt 124 x 41.151mm 144Spl.	
161-341-807	Doffer Conveyor Belt 124 x 46.724mm 168Spl.	
161-341-808	Doffer Conveyor Belt 124 x 52.298mm 192Spl.	
161-341-809	Doffer Conveyor Belt 124 x 57.871mm 216Spl.	
161-341-810	Doffer Conveyor Belt 124 x 63.444mm 240Spl.	
161-341-811	Doffer Conveyor Belt 124 x 69.018mm 264Spl.	
161-341-812	Doffer Conveyor Belt 124 x 74.591mm 288Spl.	
161-341-813	Doffer Conveyor Belt 124 x 80.164mm 312Spl.	
161-341-814	Doffer Conveyor Belt 124 x 85.738mm 336Spl.	
161-341-815	Doffer Conveyor Belt 124 x 91.311mm 360Spl.	
161-341-816	Doffer Conveyor Belt 124 x 96.885mm 384Spl.	
161-341-817	Doffer Conveyor Belt 124 x 102.458mm 408Spl.	
161-341-818	Doffer Conveyor Belt 124 x 108.031mm 432Spl.	
161-341-819	Doffer Conveyor Belt 124 x 113.605mm 456Spl.	
161-341-820	Doffer Conveyor Belt 124 x 119.178mm 480Spl.	
161-342-408	Trash Conveyor Belt 100 x 47.076mm 192Spl.	161-341-508
161-342-409	Trash Conveyor Belt 100 x 52.664mm 216Spl.	161-341-509
161-342-410	Trash Conveyor Belt 100 x 58.251mm 240Spl.	161-341-510
161-342-411	Trash Conveyor Belt 100 x 63.839mm 264Spl.	161-341-511
161-342-412	Trash Conveyor Belt 100 x 69.427mm 288Spl.	161-341-512
161-342-413	Trash Conveyor Belt 100 x 75.014mm 312Spl.	161-341-513
161-342-414	Trash Conveyor Belt 100 x 80.602mm 336Spl.	161-341-514
161-342-415	Trash Conveyor Belt 100 x 86.190mm 360Spl.	161-341-515
161-342-416	Trash Conveyor Belt 100 x 91.777mm 384Spl.	161-341-516
161-342-417	Trash Conveyor Belt 100 x 97.365mm 408Spl.	161-341-517

<u>9 Digit Nr.</u>	<u>Description</u>	<u>Other Numbers</u>
161-342-418	Trash Conveyor Belt 100 x 102.953mm 432Spl.	
161-342-419	Trash Conveyor Belt 100 x 108.540mm 456Spl.	
161-342-420	Trash Conveyor Belt 100 x 114.128mm 480Spl.	
161-343-121	Trash Conveyor belt 100 x 119.478mm	
161-343-123	Trash Conveyor Belt 100 x 130.632 mm	
161-343-701	Doffer Conveyor Belt 124 x 13.597mm	161-342-801
161-343-702	Doffer Conveyor Belt 124 x 19.170mm	161-342-802
161-343-703	Doffer Conveyor Belt 124 x 24.744mm	161-342-803
161-343-704	Doffer Conveyor Belt 124 x 30.317mm	161-342-804
161-343-705	Doffer Conveyor Belt 124 x 35.891mm	161-342-805
161-343-706	Doffer Conveyor Belt 124 x 41.464mm	161-342-806
161-343-707	Doffer Conveyor Belt 124 x 47.037mm	161-342-807
161-343-708	Doffer Conveyor Belt 124 x 52.611mm	161-342-808
161-343-709	Doffer Conveyor Belt 124 x 58.184mm	161-342-809
161-343-710	Doffer Conveyor Belt 124 x 63.757mm	161-342-810
161-343-711	Doffer Conveyor Belt 124 x 69.331mm	161-342-811
161-343-712	Doffer Conveyor Belt 124 x 74.904mm	161-342-812
161-343-713	Doffer Conveyor Belt 124 x 80.478mm	161-342-813
161-343-714	Doffer Conveyor Belt 124 x 86.051mm	161-342-814
161-343-715	Doffer Conveyor Belt 124 x 91.624mm	161-342-815
161-343-716	Doffer Conveyor Belt 124 x 97.198mm	161-342-816
161-343-717	Doffer Conveyor Belt 124 x 102.771mm	161-342-817
161-343-718	Doffer Conveyor Belt 124 x 108.345mm	161-342-818
161-343-719	Doffer Conveyor Belt 124 x 113.918mm	161-342-819
161-343-720	Doffer Conveyor Belt 124 x 119.491mm	161-342-820
161-343-721	Doffer Conveyor Belt 124 x 125.065mm	161-342-821

American **Suessen** Corporation

ACO SE-20

<u>9 Digit Nr.</u>	<u>Description</u>	<u>Other Numbers</u>
161-343-722	Doffer Conveyor Belt 124 x 130.638mm	161-342-822
161-343-723	Doffer Conveyor Belt 124 x 136.211mm	161-342-823
161-343-724	Doffer Conveyor Belt 124 x 141.785mm	161-342-824
161-343-725	Doffer Conveyor Belt 124 x 147.358mm	161-342-825
161-343-726	Doffer Conveyor Belt 124 x 152.932mm	161-342-826
161-343-727	Doffer Conveyor Belt 124 x 158.505mm	161-342-827
161-343-728	Doffer Conveyor Belt 124 x 164.078mm	161-342-828
161-343-729	Doffer Conveyor Belt 124 x 169.652mm	161-342-829
161-343-730	Doffer Conveyor Belt 124 x 175.225mm	161-342-830
161-343-801	Trash Conveyor Belt 100 x 7.962mm	
161-343-802	Trash Conveyor Belt 100 x 13.550mm	
161-343-803	Trash Conveyor Belt 100 x 19.138mm	
161-343-804	Trash Conveyor Belt 100 x 24.725mm	
161-343-805	Trash Conveyor Belt 100 x 30.313mm	
161-343-806	Trash Conveyor Belt 100 x 35.901mm	
161-343-807	Trash Conveyor Belt 100 x 41.488mm	
161-343-808	Trash Conveyor Belt 100 x 47.076mm	
161-343-809	Trash Conveyor Belt 100 x 52.664mm	
161-343-810	Trash Conveyor Belt 100 x 58.251mm	
161-343-811	Trash Conveyor Belt 100 x 63.839mm	
161-343-812	Trash Conveyor Belt 100 x 69.427mm	
161-343-813	Trash Conveyor Belt 100 x 75.014mm	
161-343-814	Trash Conveyor Belt 100 x 80.602mm	
161-343-815	Trash Conveyor Belt 100 x 86.190mm	
161-343-816	Trash Conveyor Belt 100 x 91.595mm	
161-343-817	Trash Conveyor Belt 100 x 97.172mm	

<u>9 Digit Nr.</u>	<u>Description</u>	<u>Other Numbers</u>
161-343-818	Trash Conveyor Belt 100 x 102.749mm	
161-343-819	Trash Conveyor Belt 100 x 108.325mm	
161-343-820	Trash Conveyor Belt 100 x 113.902mm	161-343-120
161-343-821	Trash Conveyor Belt 100 x 119.478mm	
161-343-822	Trash Conveyor Belt 100 x 125.055mm	
161-343-823	Trash Conveyor Belt 100 x 130.632mm	
161-343-824	Trash Conveyor Belt 100 x 136.208mm	
161-343-825	Trash Conveyor Belt 100 x 141.785mm	
161-343-826	Trash Conveyor Belt 100 x 147.361mm	
161-343-827	Trash Conveyor Belt 100 x 152.938mm	
161-343-828	Trash Conveyor Belt 100 x 158.515mm	
161-343-829	Trash Conveyor Belt 100 x 164.091mm	
161-343-830	Trash Conveyor Belt 100 x 169.668mm	
161-344-207	Trash Conveyor belt 95 x 41.488mm	
161-344-208	Trash Conveyor belt 95 x 47.076mm	
161-344-209	Trash Conveyor belt 95 x 52.664mm	
161-344-210	Trash Conveyor belt 95 x 58.251mm	
161-344-211	Trash Conveyor belt 95 x 63.839mm	
161-344-212	Trash Conveyor belt 95 x 69.427mm	
161-344-213	Trash Conveyor belt 95 x 75.014mm	
161-344-214	Trash Conveyor belt 95 x 80.602mm	
161-344-215	Trash Conveyor belt 95 x 86.190mm	161-347-015
161-344-216	Trash Conveyor belt 95 x 91.595mm	
161-344-217	Trash Conveyor belt 95 x 97.172mm	
161-344-218	Trash Conveyor belt 95 x 102.749mm	
161-344-219	Trash Conveyor belt 95 x 108.325mm	

American **Suessen** Corporation

ACO SE-20

<u>9 Digit Nr.</u>	<u>Description</u>	<u>Other Numbers</u>
161-344-220	Trash Conveyor belt 95 x 113.902mm	
161-344-221	Trash Conveyor belt 95 x 119.478mm	
161-344-222	Trash Conveyor belt 95 x 125.055mm	161-346-322
161-344-223	Trash Conveyor belt 95 x 130.632mm	
161-344-319	Doffer Conveyor belt 124 x 115.916mm	
161-344-720	Doffer Conveyor belt 124 x 119.632mm	
161-344-722	Doffer Conveyor Belt 124 x 130.779 mm	
161-344-723	Doffer Conveyor belt 124 x 136.352mm	161-344-323
161-344-724	Doffer Conveyor belt 124 x 141.926mm	
161-344-830	Doffer Conveyor Belt 124 x 177.370mm., 720 Spl.	
161-345-710	Doffer Conveyor Belt 124 x 63.898 mm	
161-345-711	Doffer Conveyor Belt 124 x 69.427mm	
161-345-712	Doffer Conveyor Belt 124 x 75.045mm	
161-345-713	Doffer Conveyor Belt 124 x 80.618mm	
161-345-714	Doffer Conveyor Belt 124 x 86.192mm, 336 Spl.	
161-345-715	Doffer Conveyor Belt 124 x 91.765 mm, 360 Spl.	
161-345-716	Doffer Conveyor Belt 124 x 97.338 mm, 384 Spl.	
161-345-719	Doffer Conveyor Belt 124 x 114.059mm, 456 Spl.	
161-345-720	Doffer Conveyor Belt 124 x 119.362 mm, 480 Spl.	
161-345-721	Doffer Conveyor Belt 124 x 125.205mm	
161-345-722	Doffer Conveyor Belt 124 x 130.779mm	
161-345-723	Doffer Conveyor Belt 124 x 136.352mm	
161-345-724	Doffer Conveyor Belt 124 x 141.926mm	
161-345-828	Doffer Conveyor Belt 124 x 166.223 mm, 672 Spl.	
161-345-830	Doffer Conveyor Belt 124 x 177.370mm, 720 Spl.	
161-345-831	Doffer Conveyor Belt 124 x 182.944 mm	

<u>9 Digit Nr.</u>	<u>Description</u>	<u>Other Numbers</u>
161-345-832	Doffer Conveyor Belt 124 x 188.517 mm	
161-346-312	Trash Conveyor Belt 95 x 69.427 mm	
161-346-313	Trash Conveyor Belt 95 x 75.014 mm	
161-346-318	Trash Conveyor Belt 95x102.749 mm, 432 Spl.	
161-346-319	Trash Conveyor Belt 95x108.325 mm, 456 Spl.	
161-346-320	Trash Conveyor Belt 95x113.902 mm, 480 Spl.	
161-346-323	Trash Conveyor Belt 95x130.632 mm, 552 Spl.	
161-346-330	Trash Conveyor Belt 95 x 169.668 mm, 720 Spl.	161-344-230 siehe Notiz
161-346-614	Trash Conveyor Belt 95 x 80.602mm	
161-346-615	Trash Conveyor belt 95 x 86.190 mm, 360 Spl.	
161-346-620	Trash Conveyor Belt 95 x 113.902 mm	
161-346-626	Trash Conveyor Belt 95 x 147.361 mm, 624 Spl.	
161-346-632	Trash Conveyor Belt 95 x 180.821 mm	161-347-032
161-347-016	Trash Conveyor Belt 95 x 91.595 mm	
161-347-019	Trash Conveyor Belt 95 x 108.325 mm	
161-347-030	Trash Conveyor Belt 95 x 169.668 mm	
161-347-031	Trash Conveyor Belt 95 x 175.244 mm	
161-350-612	Pneumatic Tube blue Ø 4 x 800 mm	
161-655-072	Ec-Motor CAN	
161-655-587	Adapter Lead	
161-660-101	Hall-Sensor B332	
161-660-102	Hall-Sensor B333	
161-660-103	Hall-Sensor B334	
161-660-104	Hall-Sensor B335	
161-660-105	Hall-Sensor B336	
161-660-106	Hall-Sensor B337	

American **Suessen** Corporation

ACO SE-20

<u>9 Digit Nr.</u>	<u>Description</u>	<u>Other Numbers</u>
161-660-108	Hall-Sensor B339	
161-660-109	Hall-Sensor B352	
161-660-110	Hall-Sensor B353	
161-660-111	Hall-Sensor B354	
161-660-112	Hall-Sensor B355	
161-660-113	Hall-Sensor B356	
161-660-114	Hall-Sensor B357	
161-660-116	Hall-Sensor B359	
161-660-117	Hall-Sensor B412	
161-660-118	Hall-Sensor B413	

<u>9 Digit Nr.</u>	<u>Description</u>	<u>Other Numbers</u>
161-660-119	Hall-Sensor B414	
161-660-121	Hall-Sensor B416	
161-660-122	Hall-Sensor B417	
161-660-123	Hall-Sensor B418	
161-660-124	Hall-Sensor B419	
161-660-125	Hall-Sensor B374	
161-660-126	Hall-Sensor B375	
161-660-127	Hall-Sensor B376	
161-660-128	Hall-Sensor B377	
161-660-129	Hall-Sensor B338	

American **Suessen** Corporation

Rotors SE-20 (direct drive)



Type	Part No.	Type	Part No.	Type	Part No.
T 633 BD**	11204149	G 628 BD	11204051	K 631	11204048
T 634 BD**	11238003	G 630 BD	11203934		
T 636 BD	11204295	G 631 BD	11257227	U 640 BD	11205095
T 640 BD	11204463	G 6633 BD	11210484	U 646 BD	11205132
T 646 BD	11204529	G 633 B	11284403		
T 646 B	11288706	G 636 BD	11200860	S 652 DN	11247684
		G 636 B	11248852		
TT 636 BD	11246695	G 640 BD	11203851		
TT 640 BD	11247404				
TT646 BD	11247294	GL 628 BD	11246841		
		GL 631 BD	11247142		

**Requires 1.5 mm washer

Please contact your Sales Representative for other specialty types.

American **Suessen** Corporation

Solindrings

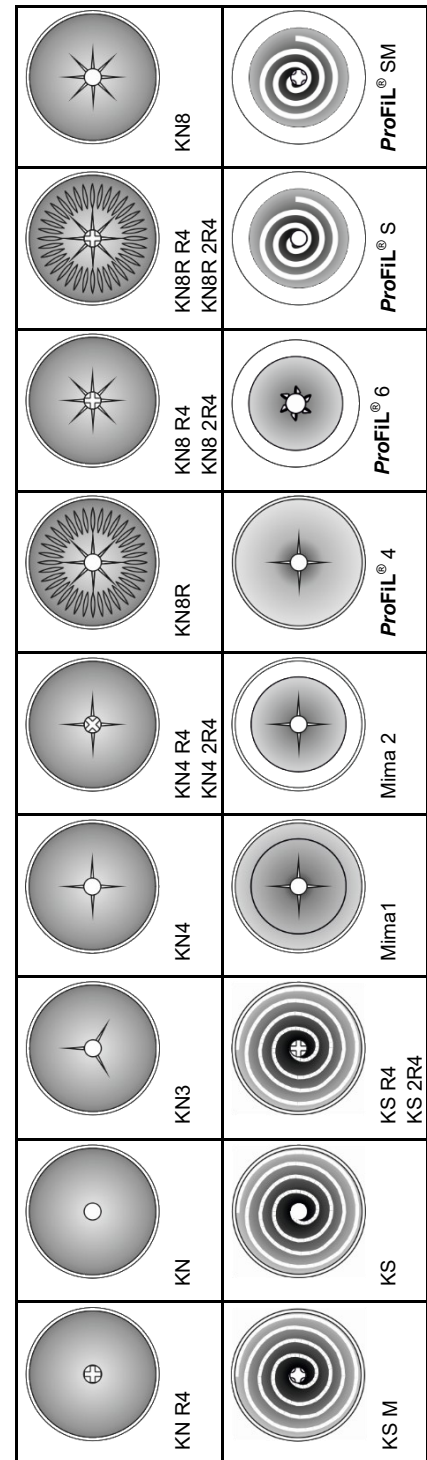


Type	Part Number	Type	Part Number
B 174 N	9583894	S 21 N	9579299
B 174 DN	9583895	S 21 DN	9579485
B 174 CR	10232544	S 21 DN- FG	9586806
B 174 DN-FG	9586802	S 22 P	9579481
B 174-4.8 N	9581044	S 25 DN	9595748
B 174-4.8 DN	9581046	S 43-3.6 N	10414980
B 187 DN	9586803	S 43-3.6 DN	10231503
B 20 N	9586804		
B 20 DN	9585010		
B 20 CR	10523556		

American **Suessen** Corporation

Navels

Type	Part No. (Magnet) SE-10/11/12/20
KN	10231648
KN R4	10231716
KN 4	10659948
<i>ProFil 4</i>	10231719
KN3	10231717
KN 4 R4	10671550
KN 4 2R4	10670765
<i>ProFil 6</i>	10494908
KN 8	10231720
KN 8R	10231726
KN 8 R4	10231723
KN 8R R4	10231727
KN 8 2R4	10231724
KN 8R 2R4	10231731
KS	10231732
<i>ProFil S</i>	10433628
KS R4	10231733
KS M	10231745
KS 2R4	10231735
<i>ProFil SM</i>	10507842
KSK6	1134905
MIMA 2	10739203



10400808
Aluminum
Washer for
Magnetic Navel
1.5mm



9576246
Washer for
Magnetic
Navel 1.5mm



9591393
Washer for
Navel
16 x 10.3 x 1



2220029
Washer for
Navel
16 x 10.3 x 0.5

American **Suessen** Corporation

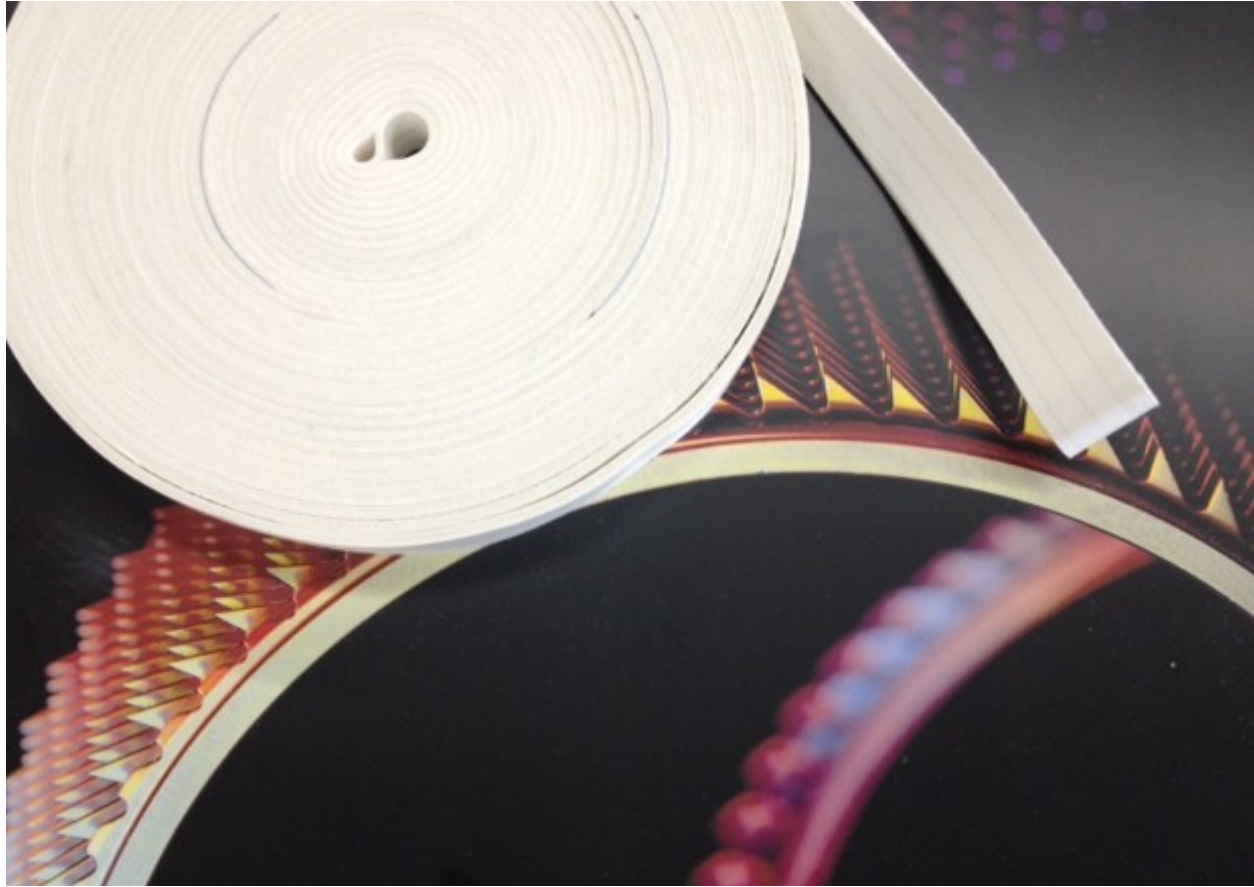
Grease



Description	Suessen Part Number	Description	Suessen Part Number
Staburags NBU 12/300 KP Grease (1kg container)	1730001	Isoflex Topas L 152 Grease (1kg container)	1730017
Staburags NBU 12/300 KP Grease (400g cartridge)	1730002	Isoflex Topas L 152 Grease (370g cartridge)	1730012
Isoflex NBU 15 Grease (1kg container)	1730006	Staburags NBU 4 Grease (1kg container)	1730021
Isoflex NBU 15 Grease (400g cartridge)	1730007	Staburags NBU 8 EP Grease (1kg container)	1730022
Isoflex LDS18 SPECIAL A Grease (1kg container)	1730010	Klueberquiet BQH 72-102 Grease (1kg container)	1730005
Isoflex Grease LDS18 SPECIAL A (400g cartridge)	1730013	Klueberquiet BQH 72-102 Grease (400g cartridge)	1730009
<p>Other Klüber greases available upon request. Greases are also available in cartridges. Please inquire to your Sales Representative.</p>			

American **Suessen** Corporation

Trash & Doffer Belts



Conveyor (Doffer) Belt SE-20 ACO 8/9	Suessen Part Number	Conveyor (Doffer) Belt SE-20 ACO 8/9	Suessen Part Number
Doffer Belt 124mm x 91624mm 360 pos.	2894223	Doffer Belt 124mm x 102912mm 408 pos	2894380
Doffer Belt 124mm x 113918mm 456 pos.	2894386	Doffer Belt 124mm x 149503mm 600 pos.	2894379
Trash Belts SE-20 ACO 8/9	Suessen Part Number	Trash Belts SE-20 ACO 8/9	Suessen Part Number
Trash Belt 100mm x 41488mm 168 pos.	2820600	Trash Belt 100mm x 97365mm 408 pos.	10980297
Trash Belt 100mm x 75014mm 312 pos.	2820606	Trash Belt 100mm x 114128mm 480 pos.	10980298
Trash Belt 100mm x 80602mm 336 pos.	2820607	Trash Belt 100mm x 147361mm 624 pos.	2820610
Trash Belt 100mm x 86190mm 360 pos.	2820608	Trash Belt 95mm x 141785mm 600 pos.	2820613
<p>Please check belt length before ordering.</p> <p>NOTE: All sizes of Doffer Belts, Trash Belts, and Tube Conveyor Belts are listed on pages A-18 through A-21.</p>			

Bräcker Rolsprint

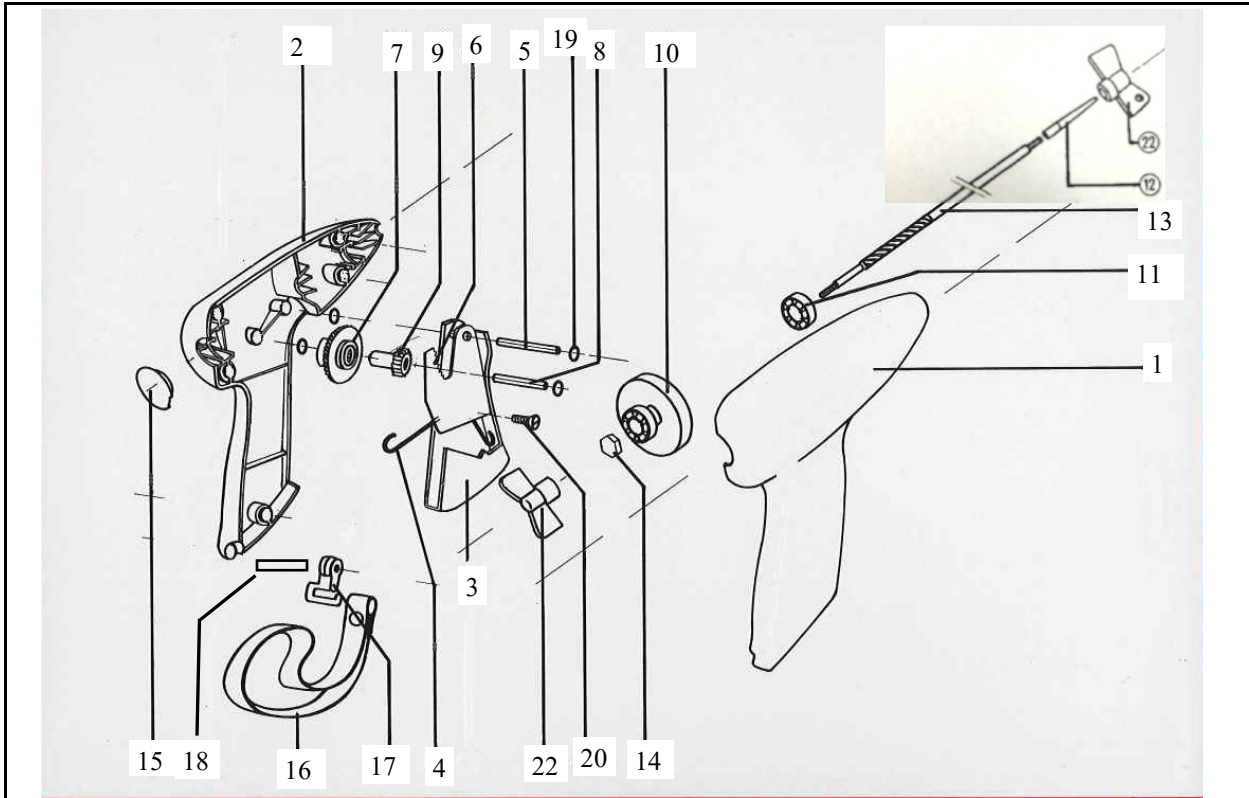
Rolsprints Complete

Type	Spindle Length	ASC Part Number
Rolsprint WITH spindle	200 mm	0682604
	315 mm	0682606
	400 mm	0682608
	500 mm	0682610
	800 mm	0682611
Rolsprint WITHOUT spindle	N/A	0682602

NOTE: Please use "0" when inputting ASC part number.



Bräcker Rolsprint



Position	Description	ASC Part Number	Position	Description	ASC Part Number
1	Housing right	0682620	13	Spindle 400 mm	0682638
2	Housing left	0682621	13	Spindle 500 mm	0682639
3	Trigger	0682622	13	Spindle 800 mm	0682651
4	Spring	0682630	14	Nut	0682640
5	Axle	0682631	15	Plug	0682625
6	Sector Gear	0682632	16	Loop incl. clips	0682641
7	Geared Wheel Assembly	0682623	17	Loop clips only	
8	Free Wheel Axle	0682633	18	Bolt	0682642
9	Driving Gear	0682634	19	Spring Washer	0682643
10	Fly wheel w/ball-bearing	0682624	20	Screw	0682644
11	Ball Bearing	0682635	21	Self tapping screw	0682554
12	Interchangeable Tip	0682521	22	Spanner	0682627
13	Spindle 200 mm	0682636	23	Lockwasher (1,000 pcs.)	0682648
13	Spindle 315 mm	0682637			

NOTE: Please use "0" when inputting ASC part number.

American **Suessen** Corporation

Electrical & Pneumatic

German Made Hand Tools



*Please visit www.wiha.com to find any tool you are needing.
Wiha prices are ASC prices.*



American **Suessen** Corporation

Electrical & Pneumatic

Mechanical Manual Valves & Accessories

Rexroth
Bosch Group

FESTO

SMC



AVENTICS

AUTOMATIC VALVE

CAMOZZI

Position Sensors and Object Recognition



Micro Detectors

DATASENSOR
value through detection

Baumer electric

SICK
Sensor Intelligence.

BANNER

Incremental Absolute Encoders

ELTRA

Leuze lumiflex, Inc.

Shocks / Dampers

FESTO

Weforma

STABILIS

Gear Boxes and Motors

ROSSI GEARMOTORS

**NERI
MOTORI**

BONFIGLIOLI
Power & Control Solutions

TRAMEC

Power Transmission Products

BRECO flex

Gates

REXNORD

MEGADYNE

American **Suessen** Corporation

Shipping Address:

**American Suessen Corporation
11600 Goodrich Drive
Charlotte, NC 28273**

Tel: 704/588-2365

Fax: 704/588-3945

: **orders@americansuessen.com**

Hours: Mon.-Fri. 8:30am to 5:00pm

www.americansuessen.com