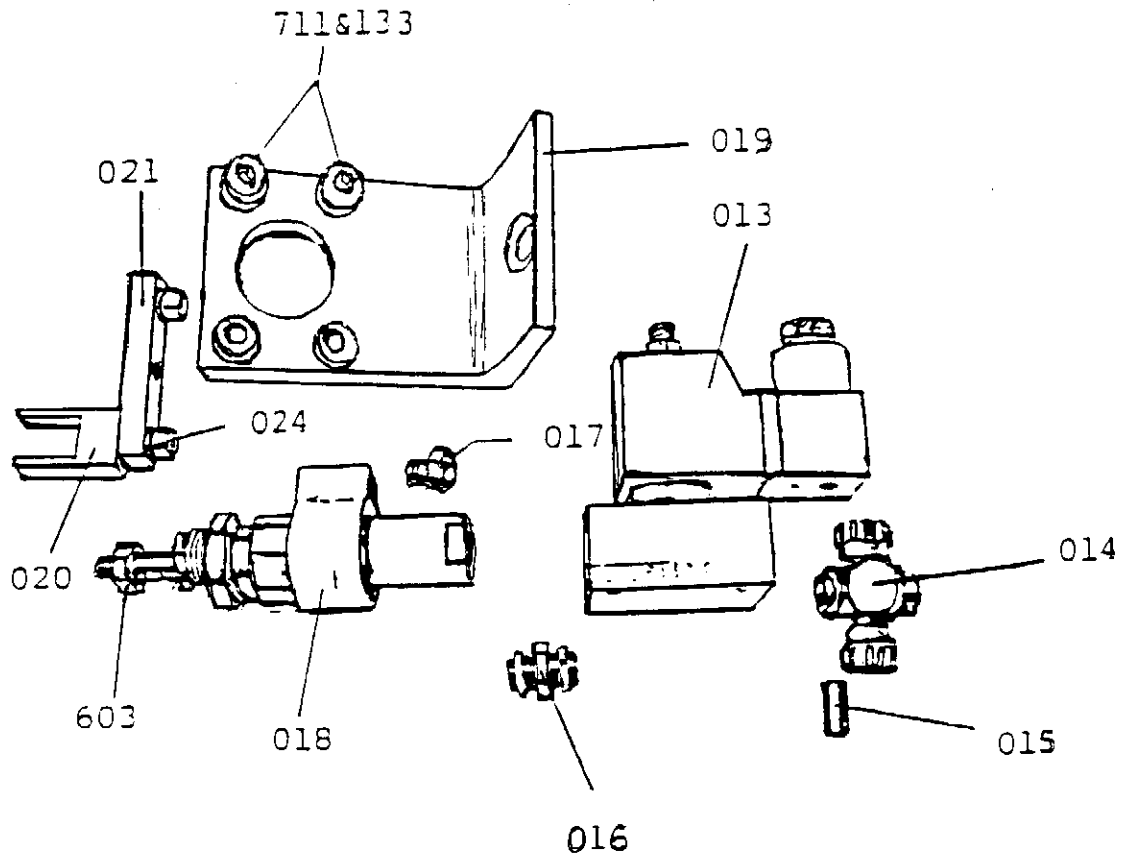


COMPENSATOR ARM
FOR GILBOS WINDER

PENDELARM FUER
GILBOS SPULMASCHINE

| <u>Part No.</u> | <u>Part Name</u> | <u>Benennung</u> |
|-----------------|--------------------------------|------------------------------------|
| 001 | Bearing Housing | Lagergehaeuse |
| 002 | Mounting Bar | Montagetraeger |
| 003 | Compensator Arm | Pendelarm |
| 004 | Ball Brg. Pulley | Leitrolle |
| 005 | KU-Brg. with Clamp | Lagerzapfen mit Klemmstueck |
| 006 | Coupling | Kupplung |
| 007 | Potentiometer | Potentiometer |
| 008 | Potentiometer Housing | Potentiometergehaeuse |
| 009 | Set Screw M6x10 | Gewindestift M6x10 |
| 010 | Flat Washer 3/8" | Scheibe 3/8" |
| 011 | Back Cover Plate | Rueckenplatte |
| 012 | Slotted Machine Screw M6x10 | Zyl.-Schraube mit Schlitz M6x10 |
| 132 | Washer 6.4 | Scheibe 6,4 |
| 142 | Hex. Hd. Screw M6x20 | 6kt.-Schraube M6x20 |
| 319 | Socket Hd. Screw M6x25 | Zylinderschraube M6x25 |

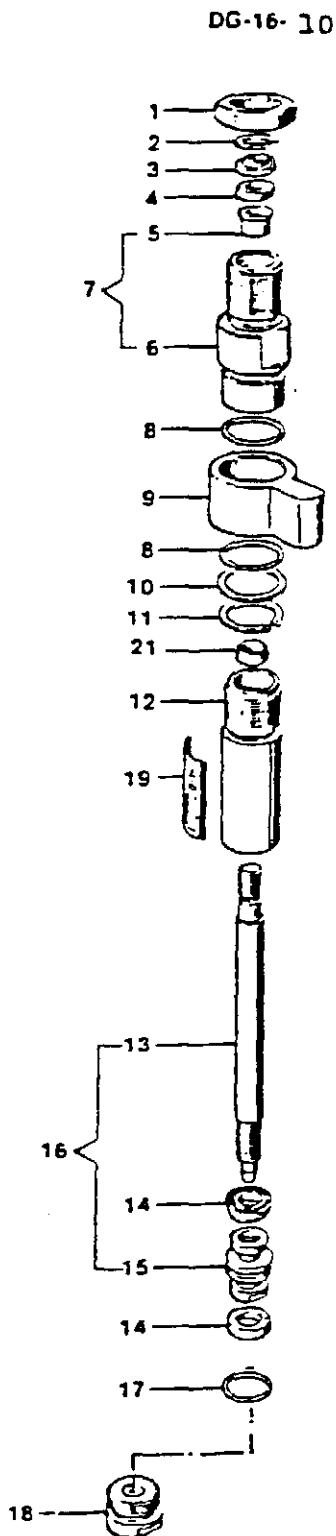


COMPENSATOR ARM
FOR GILBOS WINDER

PENDELARM FUER
GILBOS SPULMASCHINE

| <u>Part No.</u> | <u>Part Name</u> | <u>Benennung</u> |
|-----------------|---|------------------------------------|
| 013 | Solenoid Valve MC-3-1/8" complete | Magnetventil MC-3-1/8" komplett |
| 014 | Tee-Connector TCK 1/8" PK6 | T-Stueck TCK 1/8" PK6 |
| 015 | End Cap CB-PK-6B | Endstopfen CB-PK-6B |
| 016 | Nipple E-1/8" - 1/8" | Zwischenstueck E-1/8" - 1/8" |
| 017 | Breather Vent ASP-1-BV | Schalldaempfer ASP-1-BV |
| 018 | Solenoid Cylinder DG-16-10, complete | Luftzylinder DG-16-10 komplett |
| 019 | Solenoid Bracket | Haltewinkel |
| 020 | Plastic Fork CH 110-9 | Plastik Fuehrung CH 110-9 |
| 021 | Plate CH 110-8 | Platte CH 110-7 |
| 024 | Hex. Hd. Screw M6x16 M6x50 | 6kt.-Schraube M6x16 M6x50 |
| 133 | Lock Washer A8 | Ring A8 |
| 603 | Hex. Nut M8 | 6kt.-Mutter M8 |
| 711 | Socket Hd. Screw M8x20 | Zylinderschraube M8x20 |

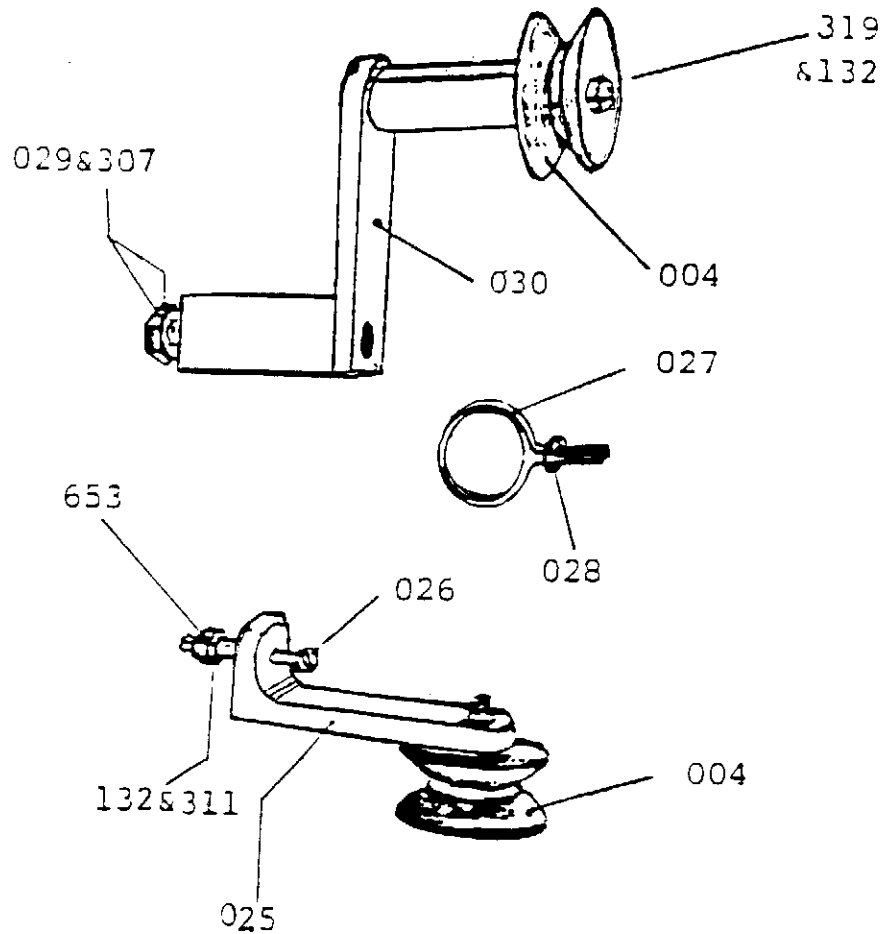
PART NO. 018 SOLENOID CYLINDER DG 16-10
 TEIL NR. 018 LUFTZYLINDER DG 16-10



| Item | Order/Symbols |
|------|---------------|
| 1 | 204 596 |
| 2 | 200 541 |
| 3 | 100 242 ◇ |
| 4 | 200 883 ◇ |
| 5 | 201 324 |
| 6 | + |
| 7 | 100 306 □ |
| 8 | 200 208 ◇ |
| 9 | 201 835 |
| 10 | 201 091 |
| 11 | 200 352 |
| 12 | 205 328 ↓ 10 |
| 13 | 205 329 ↓ 10 |
| 14 | 203 988 ◇ |
| 15 | 201 834 |
| 16 | 101 408 ↓ 10 |
| 17 | 200 934 |
| 18 | 201 833 ◇ |
| 19 | 205 181 ↓ 10 |
| 20 | 100 538 ◆ |

- Symbols: ◇ Wearing parts - Verschleissteile
 ◆ Wearing part kit - Verschleisstellsatz
 + Parts not available separately - *
 □ Subassembly - Teilgruppe
 ↓ Stroke in mm - Hub in mm
 - *Nicht erhaeltlich als Einzelteil

Note: For disassembly of air cylinder DG 16-10 unscrew with 17 mm open-end wrench part No. 18, hold with 22 mm at part No. 6. When unscrewed, piston rod assembly No. 16 can be removed.



COMPENSATOR ARM
FOR GILBOS WINDER

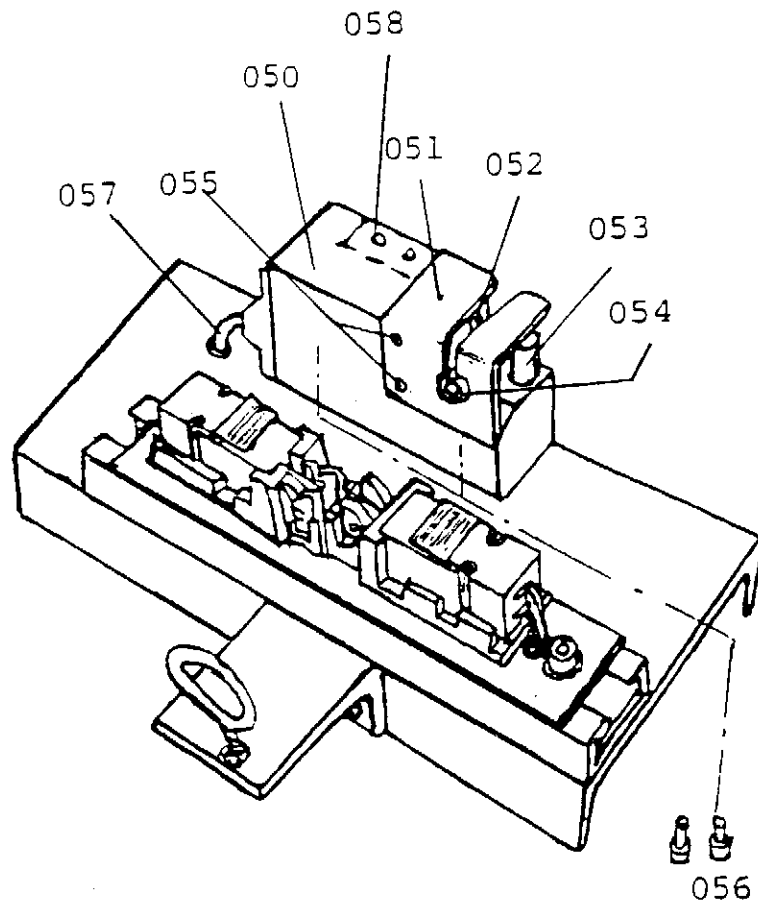
PENDELARM FUER
GILBOS SPULMASCHINE

Part No. Part Name

| | |
|-----|--------------------------------|
| 004 | Ball Brg. Pulley |
| 025 | Angle Holder |
| 026 | Slotted Machine Screw M6x50 |
| 027 | Eye Bolt |
| 028 | Hex Nut 1/4" - 28 |
| 029 | Hex. Hd. Screw M10x25 |
| 030 | Guide Roll Bracket Assembly |
| 132 | Flat Washer 6.4 |
| 307 | Lock Washer A10 |
| 311 | Lock Washer A6 |
| 319 | Socket Hd. Screw M6x25 |
| 653 | Hex. Nut M6 |

Benennung

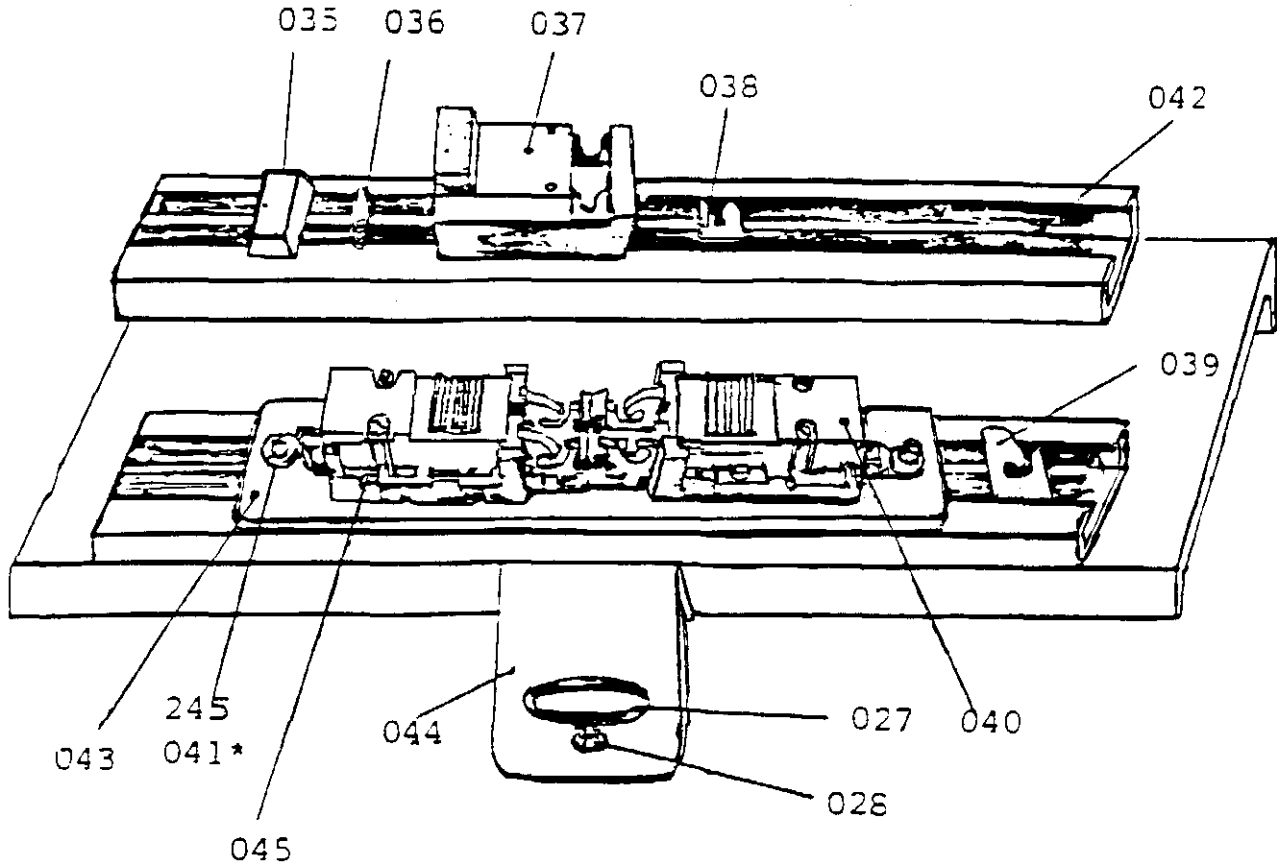
| |
|------------------------------------|
| Leitrolle mit Kugellager |
| Haltewinkel |
| Zyl.-Schraube mit Schlitz M6x50 |
| Fadenoese |
| 6kt.-Mutter 1/4" - 28 |
| 6kt.-Schraube M10x25 |
| Fuehrungsrollenhalter |
| Scheibe 6,4 |
| Federring A10 |
| Federring A6 |
| Zylinderschraube M8x25 |
| 6kt.-Mutter M6 |



COMPENSATOR ARM
FOR GILBOS WINDER

PENDELARM FUER
GILBOS SPULMASCHINE

| <u>Part No.</u> | <u>Part Name</u> | <u>Benennung</u> |
|-----------------|-------------------------------|-----------------------------|
| 050 | Cutter (Optional Replacement) | Garnschneider (Alternative) |
| 051 | Guide Cover | Fuehrungsabdeckung |
| 052 | Replacement Knife | Ersatzmesser |
| 053 | Anvil Roll complete | Amboss komplett |
| 054 | Slotted Eyelet | Fadenoese mit Schlitz |
| 055 | Socket Hd. Screw M4x10 | Zylinderschraube M4x10 |
| 056 | Socket Hd. Screw M5x12 | Zylinderschraube M5x12 |
| 057 | Cable with Connector | Kabel mit Stecker |
| 058 | Magnet for Cutter | Magnet fuer Garnschneider |

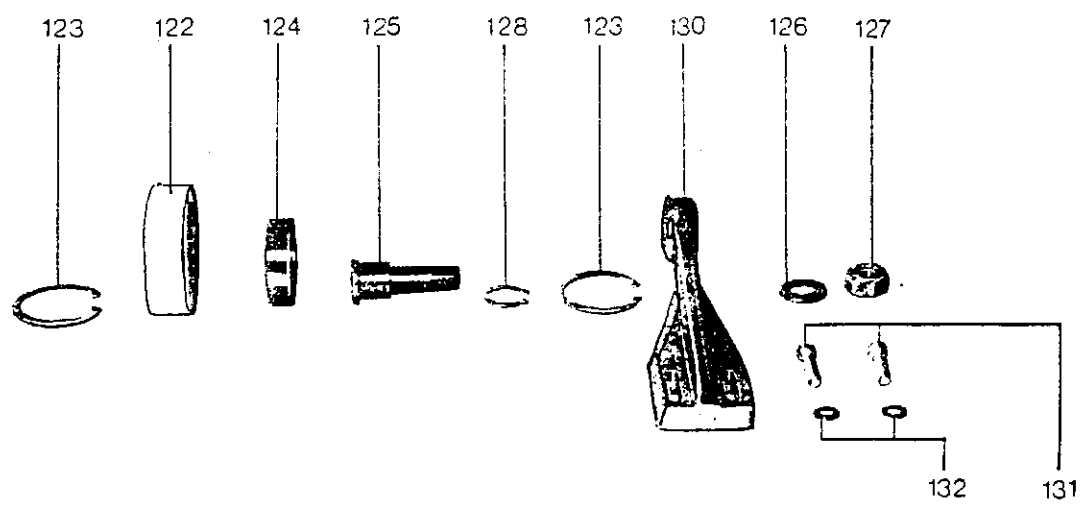
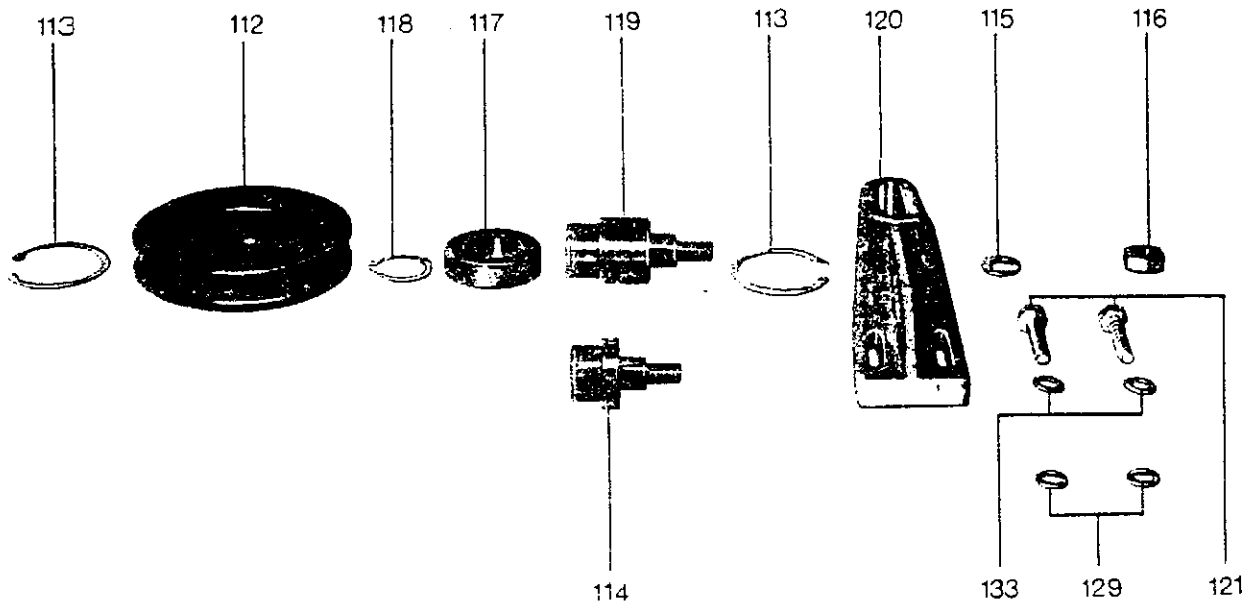
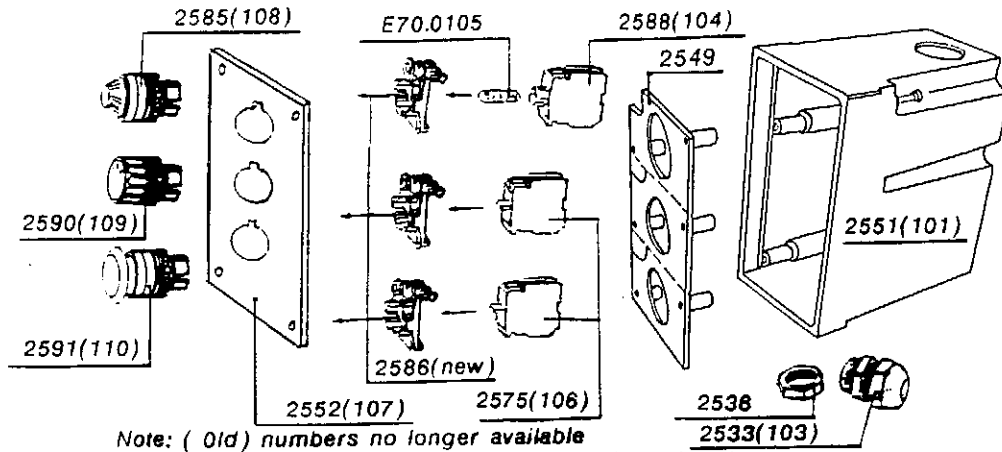


COMPENSATOR ARM
FOR GILBOS WINDER

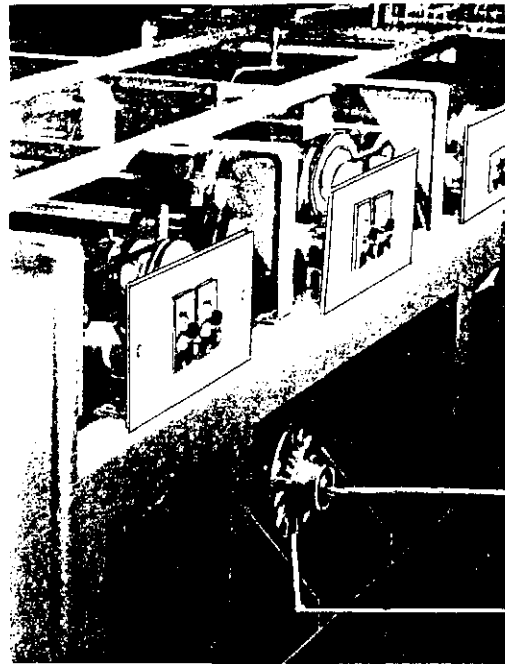
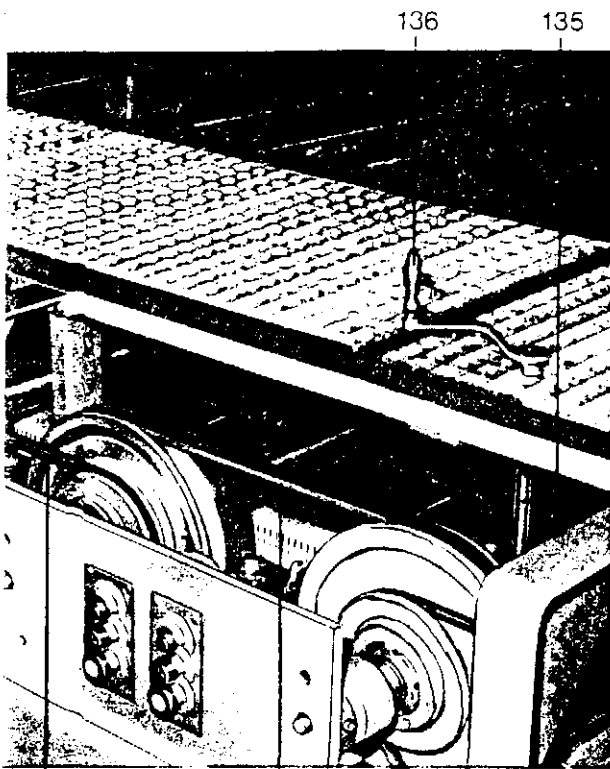
PENDELARM FUER
GILBOS SPULMASCHINE

| <u>Part No.</u> | <u>Part Name</u> | <u>Benennung</u> |
|-----------------|---|---|
| 027 | Eye Bolt # 8016 | Fadenoese # 8016 |
| 028 | Hex. Nut 1/4"-28 | 6kt.-Mutter 1/4"-28 |
| 035 | Light Cover | Lampenabdeckung |
| 036 | Light Bulb | Lampe |
| 037 | Yarn Cutter CA 9-TE 11 | Garnschneider CA 9-TE 11 |
| 038 | Ceramic Guide for Cutter | Keramikfuehrung for Garnschneider |
| 039 | Ceramic Guide for Stop-Motion Switch | Keramikfuehrung for Fadenbruchueberwachung |
| 040 | Stop-Moiton Switch XC2 FA 116 | Fadenbruchueberwachung XC2 FA 116 |
| 041 | Fixing Plate | Halteplatte |
| 042 | Mounting Rail Cover | Abdeckschiene |
| 043 | Mounting Plate for Stop Motion | Grundplatte for Fadenbruchueberwachung |
| 044 | Eye Bolt Bracket | Fadenoesenwinkel |
| 045 | Slotted Machine Screw M3x12 | Zyl.-Schraube mit Schlitz M3x12 |
| 245 | Socket Hd. Screw M6x16 | Zylinderschraube M6x16 |

SPARE PARTS FOR GWM YARN WINDING MACHINE
 ERSATZTEILE FÜR GARNWICKELMASCHINE GWM

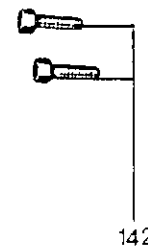
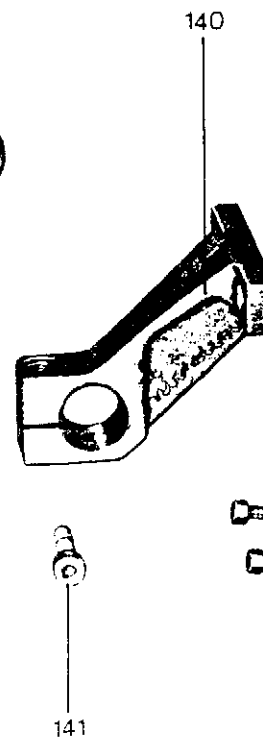
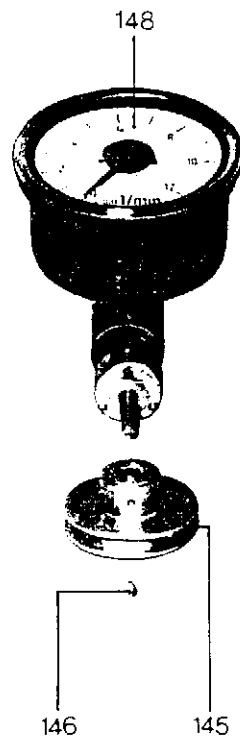
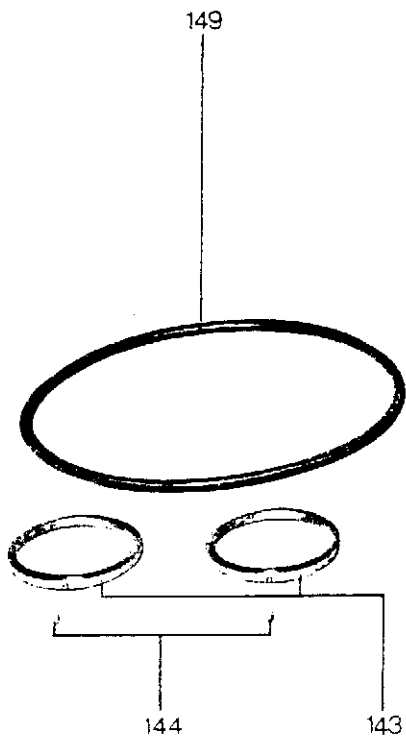
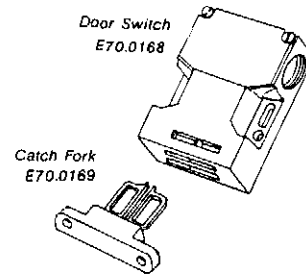


| <u>Order No.</u> | <u>Designation</u> | <u>New exchange numbers</u> |
|------------------|---|---|
| 101 | Housing H3M | <u>E70.2551</u> |
| 102 | Flat-Head Screw M4x25 | reuse |
| 103 | <u>Fastener with Nut PG 13.5-1250/13</u> | <u>reuse or order E70.2533+2536</u> |
| 104 | <u>Bulb Mounting Socket EF</u> | <u>E70.2588</u> Note:new MOUNTING |
| 105 | <u>Bulb GL 130</u> | <u>E70.0105</u> ADAPTOR E70.2586 |
| 106 | <u>Contact Block K-NA</u> | <u>E70.2575</u> is needed for assembly |
| 107 | <u>Mounting Plate e-K3</u> | <u>E70.2552</u> (come with E70.2549) |
| 108 | <u>Lamp Collar with red Lens L2-rt</u> | <u>E70.2585</u> |
| 109 | <u>Selector Switch with Indicator W 91/92</u> | <u>E70.2590</u> |
| 110 | <u>Mushroom Push-Button 51</u> | <u>E70.2591</u> |
| 111 | Flat-Head Screw M4x16 | <u>E70.2549 Mounting Cover for 2551</u> |
| 112 | Pulley Ø 105.6x20 | Spannrolle Ø 105,6x20 |
| 113 | Retainer Ring 47x1.75 | Sicherungsring 47x1,75 |
| 114 | Axle, Short 53 mm | Bolzen, kurz 53 mm |
| 115 | Washer 10.5 | Scheibe 10,5 |
| 116 | Hex. Nut M10 | 6kt.-Mutter M10 |
| 117 | Grooved Ball Bearing 6005 | Rillenkugellager 6005 |
| 118 | Retainer Ring 25x1.2 | Sicherungsring 25x1,2 |
| 119 | Axle, Long 71 mm | Bolzen, lang 71 mm |
| 120 | Holder for Idler Pulley | Halter fuer Scheibe |
| 121 | Hex. Screw M8x25 DIN 933 | 6kt.-Schraube M8x25 |
| 122 | Pulley Ø 60x20.5 | Stuetzrolle Ø 60x20,5 |
| 123 | Retainer Ring 40x1.75 | Sicherungsring 40x1,75 |
| 124 | Grooved Ball Bearing 6203 | Rillenkugellager 6203 |
| 125 | Axle Ø 22x50 | Bolzen Ø 22x50 |
| 126 | Washer 13 | Scheibe 13 |
| 127 | Hex. Nut M12 | 6kt.-Mutter M12 |
| 128 | Retainer Ring 17x1 DIN 471 | Sicherungsring 17x1 |
| 129 | Washer 8.4 | Scheibe 8,4 |
| 130 | Bracket | Lager |
| 131 | Socket-Head Screw M6x20 | Zylinderkopfschraube M6x20 |
| 132 | Washer 6.4 | Scheibe 6,4 |
| 133 | Lock Washer A8 | Ring A8 |



157

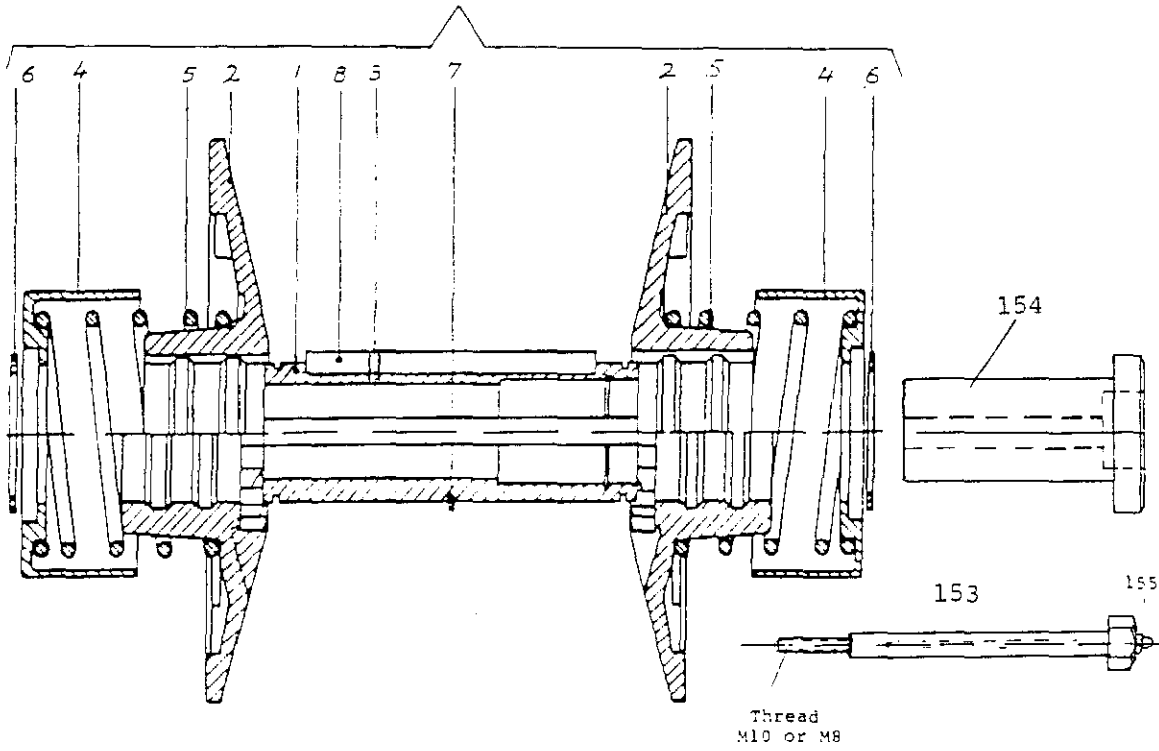
159
160



| <u>Order No.</u> | <u>Designation</u> | <u>Benennung</u> |
|------------------|-----------------------------------|--------------------------------------|
| 135 | Shaft Ø 20x590 | Welle 20x590 |
| 136 | Handle | Kurbel |
| *137 | Rolled Pin 3x20 DIN 1481 | Spannhuelse 3x20 |
| 140 | Holder for Tachometer | Halter |
| 141 | Socket-Head Screw M8x30 | Zylinderschraube M8x30 |
| 142 | Hex.-Head Screw M6x20 | 6kt.-Schraube M6x20 |
| 143 | Ring Ø 55x3 | Ring Ø 55x3 |
| 144 | Set Screw M3x4 | Gewindestift M3x4 |
| 145 | Pulley for Tachometer Ø 56x6.5 | Scheibe fuer Drehzahlmesser Ø 56x6,5 |
| 146 | Set Screw M4x8 | Gewindestift M4x8 |
| *147 | Socket-Head Screw M4x8 DIN 964 | Linsensenkschraube M4x8 |
| 148 | Tachometer | Drehzahlmesser |
| 149 | "O"Ring for Tacho Drive 159.2x5.7 | O-Ring 159,2x5,7 |
| *150 | Foot Pad | Fussplatte |
| *151 | Threaded Rod M16x120 | Gewindestange M16x120 |
| *152 | Hex. Cap Nut M16 | 6kt.-Hutmutter M16 |
| 153 | Screw M8/M10 | Schraube M8/M10 |
| 154 | Bushing | Buchse |
| 155 | Ball Grease Nipple | Schmiernippel |
| 156 | Variable Speed Pulley | Regelscheibe |
| 157 | "V"belt SPAX1500 | Keilriemen SPAX1500 |
| 159 | "V"belt 22x14x2500 | Keilriemen 22x14x2500 |
| 160 | "V"belt 22x14x2360 | Keilriemen 22x14x2360 |
| *165 | Lock for Cover | Verdeckverriegelung |
| *166 | Magnetic Switch for Cover | Magnetschalter fuer Verdeck |
| *167 | Magnet for Cover | Magnetplaettchen |
| *170 | Motor Plate | Motorschlitten |

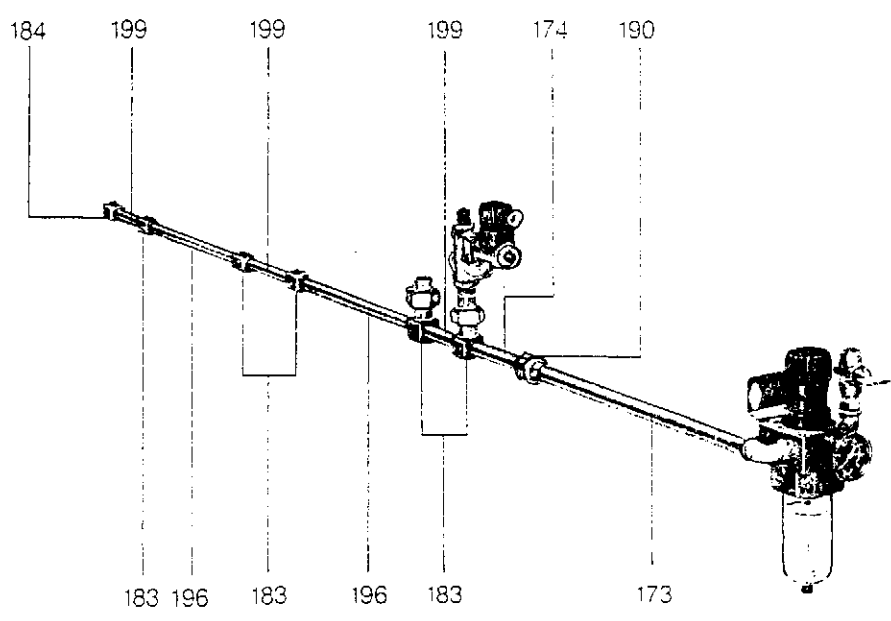
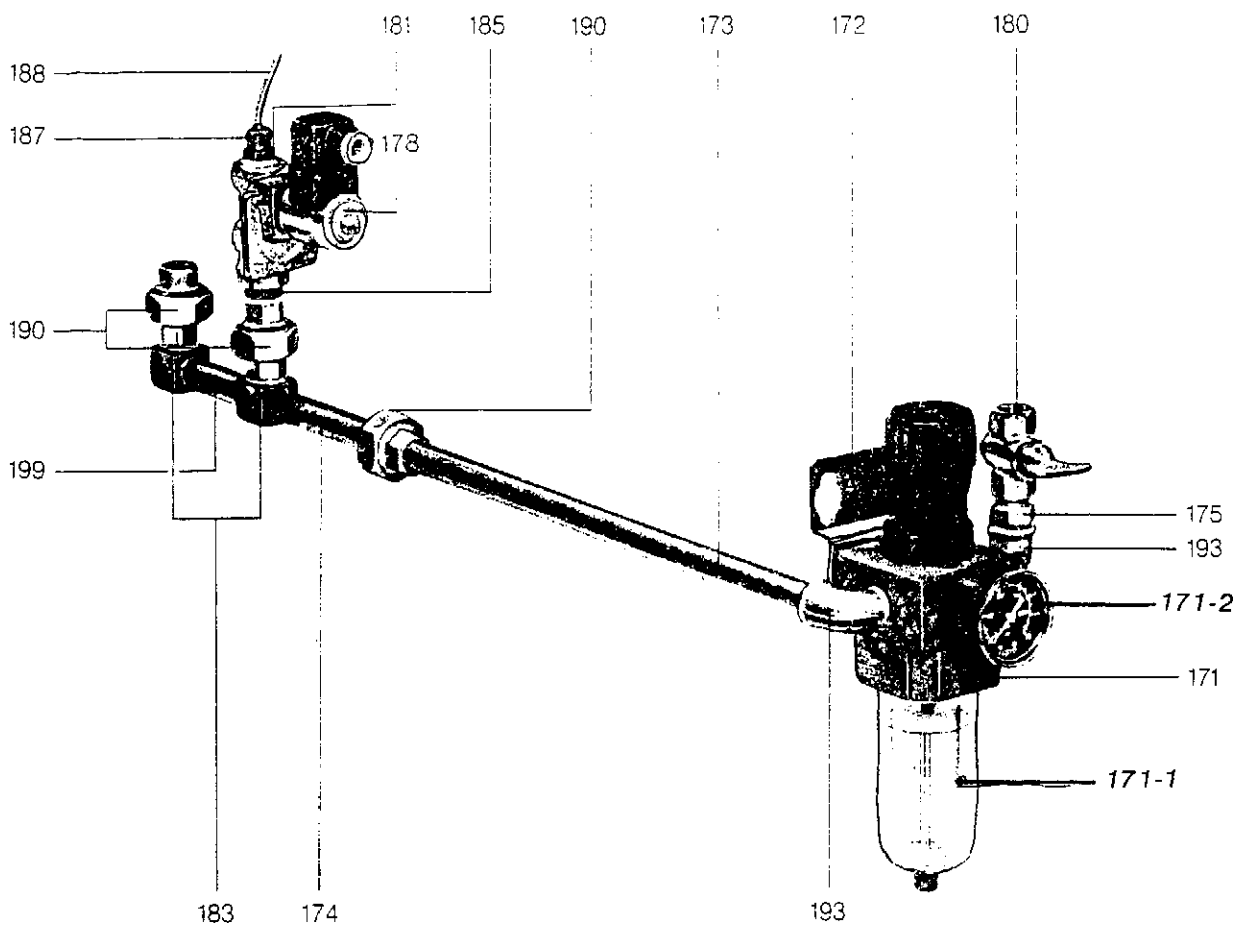
* Not Shown
Ohne Bild

ORDER NO. 156



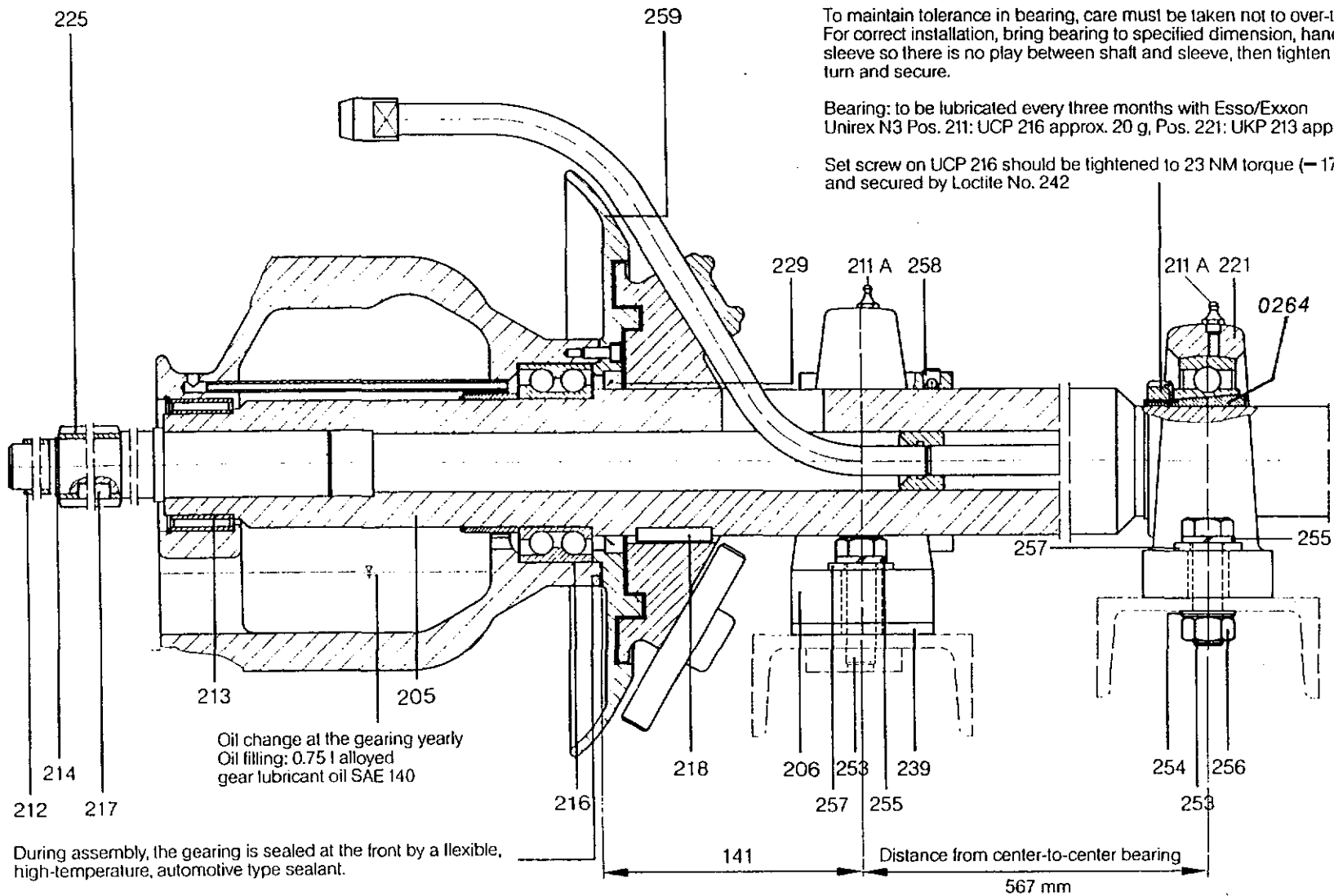
VARIABLE SPEED PULLEY No. 156
REGELSCHEIBE Nr. 156

| <u>Order No.</u> | <u>Designation</u> | <u>Benennung</u> |
|------------------|---------------------------------|-----------------------|
| 156 | Variable Speed Pulley, Complete | Regelscheibe komplett |
| 156/1 | Main Hub | Hauptnabe |
| 156/2 | Pulley Disc | Kammscheibe |
| 156/3 | Rolled Pin | Spannhuelse |
| 156/4 | Spring Cover | Federhuelle |
| 156/5 | Pressure Spring | Druckfeder |
| 156/6 | Retainer Ring | Sicherungsring |
| 156/7 | Crescent Ring | Halbmondring |
| 156/8 | Fitting key | Passfeder |
| 153 | Screw M8 or M10 | Schraube M8 oder M10 |
| 154 | Bushing | Buchse |
| 155 | Ball Grease Nipple | Schmiernippel |



| <u>Order No.</u> | <u>Designation</u> | <u>Benennung</u> |
|------------------|------------------------------|-------------------------------------|
| 171 | Reducing Valve LFR-3/8-S | Reduzierventil LFR-3/8-S |
| 171-1 | Bowl for 171 | |
| 171-2 | Gauge MA 50-16 | |
| 172 | Bracket | Halter |
| 173 | Nipple R 3/8" x355mm | Gewinderohr R 3/8"x355mm |
| 174 | Nippel R 3/8"x100mm | Gewinderohr R 3/8"x100mm |
| 175 | Double Nipple R 3/8" | Doppelnippel R 3/8" |
| *178 | Magnetic Coil for No. 181 | Magnet fuer Nr. 181 |
| *179 | Rubber Diaphragm for No. 181 | Membrane fuer Magnetventile Nr. 181 |
| 180 | Air Regulator Valve R 3/8" | Absperrhahn R 3/8" |
| 181 | Magnetic Valve 2/2 | Magnetventil 2/2 Wege |
| 183 | Tee | Verteilerstueck |
| 184 | 90° Elbow | Winkelstueck |
| 185 | Nipple | Doppelnippel |
| 187 | Union | Schnellverschraubung |
| 188 | Tubing | Druckluft-Kunststoffschlauch |
| *189 | Sealing Ring Type 0-3/8" | Dichtring Type 0-3/8" |
| 190 | Union R 3/8" | Rohrdoppelnippel R 3/8" |
| 193 | 90° Elbow | Winkel R 3/8" |
| *195 | Union GES 12 R 3/8" | Einschraubstutzen GES 12 R 3/8" |
| 196 | Nipple R 3/8"x745 mm | Rohrdoppelnippel R 3/8"x745 mm |
| 199 | Nipple R 3/8x 80 mm | Rohrdoppelnippel R 3/8"x80 mm |

* Not Shown
Ohne Bild



To maintain tolerance in bearing, care must be taken not to over-tighten it. For correct installation, bring bearing to specified dimension, hand tighten sleeve so there is no play between shaft and sleeve, then tighten nut 1/4 turn and secure.

Bearing: to be lubricated every three months with Esso/Exxon Unirex N3 Pos. 211: UCP 216 approx. 20 g, Pos. 221: UKP 213 approx. 15 g

Set screw on UCP 216 should be tightened to 23 NM torque (– 17 ft/lb.) and secured by Loctite No. 242

Oil change at the gearing yearly
 Oil filling: 0.75 l alloyed gear lubricant oil SAE 140

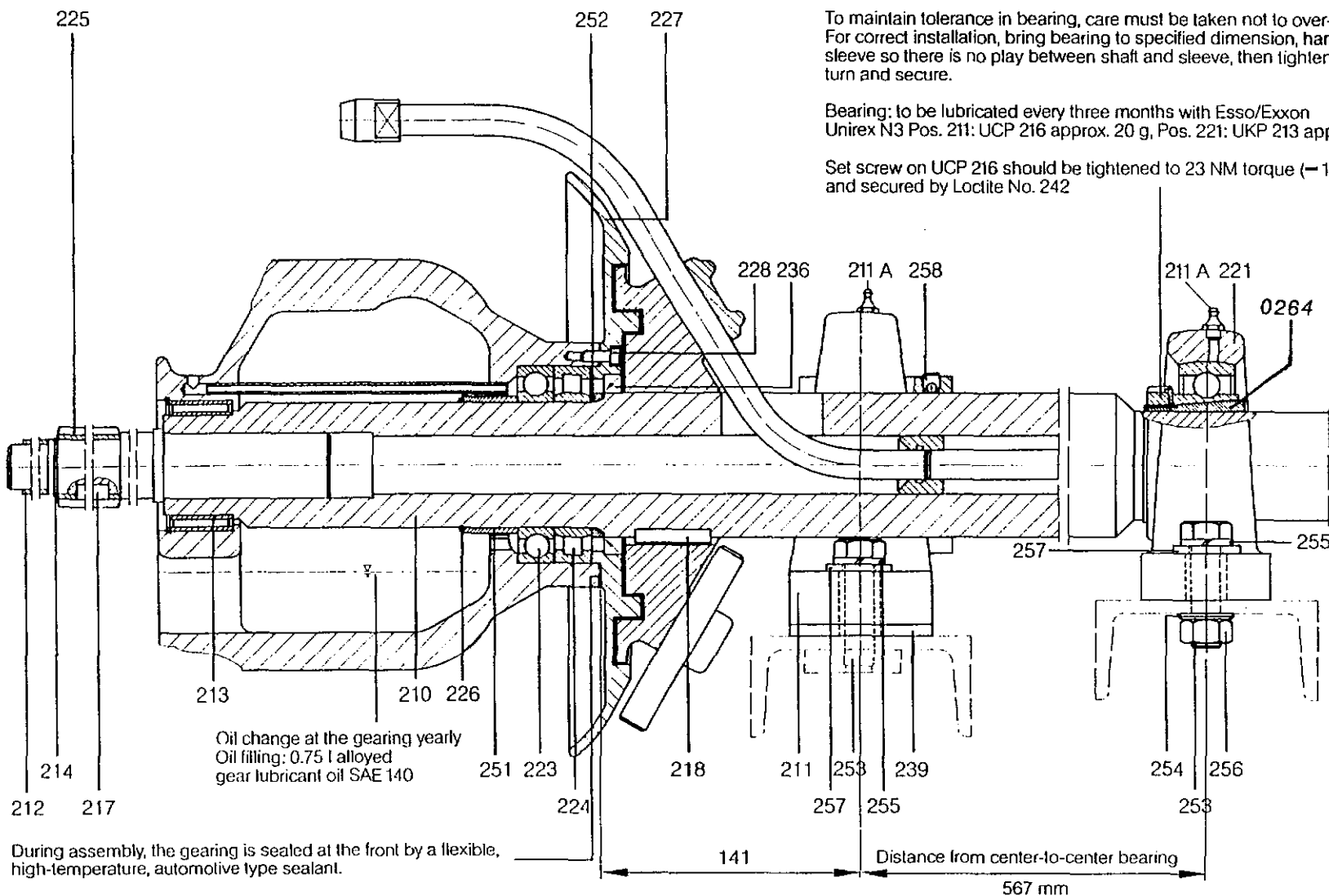
During assembly, the gearing is sealed at the front by a flexible, high-temperature, automotive type sealant.

MAIN SHAFT DRIVE Ø 60/70
 ANTRIEB DER HAUBTWELLEN Ø 60/70

MAIN SHAFT DRIVE Ø 60/70

ANTRIEB DER HAUPTWELLEN Ø 60/70

| <u>Order No.</u> | <u>Designation</u> | <u>Benennung</u> |
|------------------|---|--|
| 200 | Main Shaft Drive, Complete Ø 60/70 | Hauptwellenantrieb komplett Ø 60/70 mm |
| 205 | Main Shaft Ø 70 | Hauptwellenantrieb Ø 70 |
| 206 | Pillow Block Bearing UCP 212 | Stehlager UCP 212 |
| 211 A | Ball Grease Nipple | Kugel-Schmiernippel |
| 212 | Inner Ring 25x30x30 | Innenring 25x30x30 |
| 213 | Inner Ring 55x60x35 | Innenring 55x60x35 |
| 413 | Needle Bearing NK 60/35 (for # 213) | |
| 214 | Retainer Ring 30x1.5 | Sicherungsring 30x1,5 |
| 215 | Retainer Ring 60x2 | Sicherungsring 60x2 |
| 216 | Bearing for Main Shaft Ø 60 + Ø 70 | Schraegkugellager Ø 60 + Ø 70 |
| 217 | Key 8x7x36 | Passfeder 8x7x36 |
| 218 | Key 10x8x40 | Passfeder 10x8x40 |
| 221 | Pillow Block Bearing UKP 213 with Tension Sleeve H 2313 (E70.0264) | Stehlagereinheit UKP 213 mit Spannhuelse H 2313 |
| 225 | Worm | Schnecke |
| 229 | Radial Seal 62x90x10 | Radial Dichtung 62x90x10 |
| 229 A | Radial Seal 60x90x10 for Original 60 mm Main Shaft | Radial Dichtung 60x90x10 fuer alte 60 mm Ø Hauptwelle |
| 239 | Base Plate | Unterlage |
| 252 | Ring Ø 80x7 | Ring Ø 80x7 |
| 253 | Hex. Bolt M16x60 | 6kt.-Schraube M16x60 |
| 254 | Washer B17 | Scheibe B 17 |
| 255 | Lock Washer A16 | Federring A16 |
| 256 | Hex. Nut M16 | 6kt.-Mutter M16 |
| 257 | Washer Ø 36x4 | Scheibe 36x4 |
| 258 | Ball Set Screw for No. 206 +211 | Kugeldruckschraube fuer Nr. 206 + 211 |
| 264 | Tension sleeve H2313 | Spannhuelse H2313 |
| 259 | Flange | Flansch |



To maintain tolerance in bearing, care must be taken not to over-tighten it. For correct installation, bring bearing to specified dimension, hand tighten sleeve so there is no play between shaft and sleeve, then tighten nut 1/4 turn and secure.

Bearing: to be lubricated every three months with Esso/Exxon Unirex N3 Pos. 211: UCP 216 approx. 20 g, Pos. 221: UKP 213 approx. 15 g

Set screw on UCP 216 should be tightened to 23 NM torque (= 17 ft/lb.) and secured by Loctite No. 242

Oil change at the gearing yearly
 Oil filling: 0.75 l alloyed gear lubricant oil SAE 140

During assembly, the gearing is sealed at the front by a flexible, high-temperature, automotive type sealant.

MAIN SHAFT DRIVE Ø 80
 ANTRIEB / HAUPTWELLE Ø 80

141

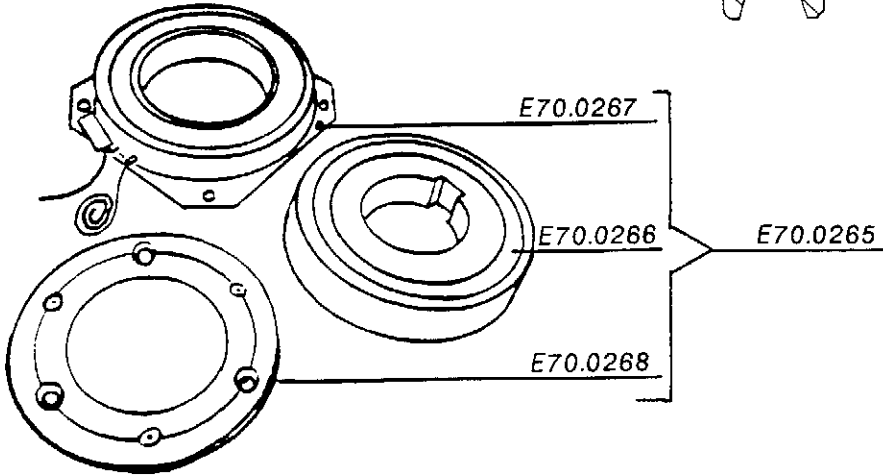
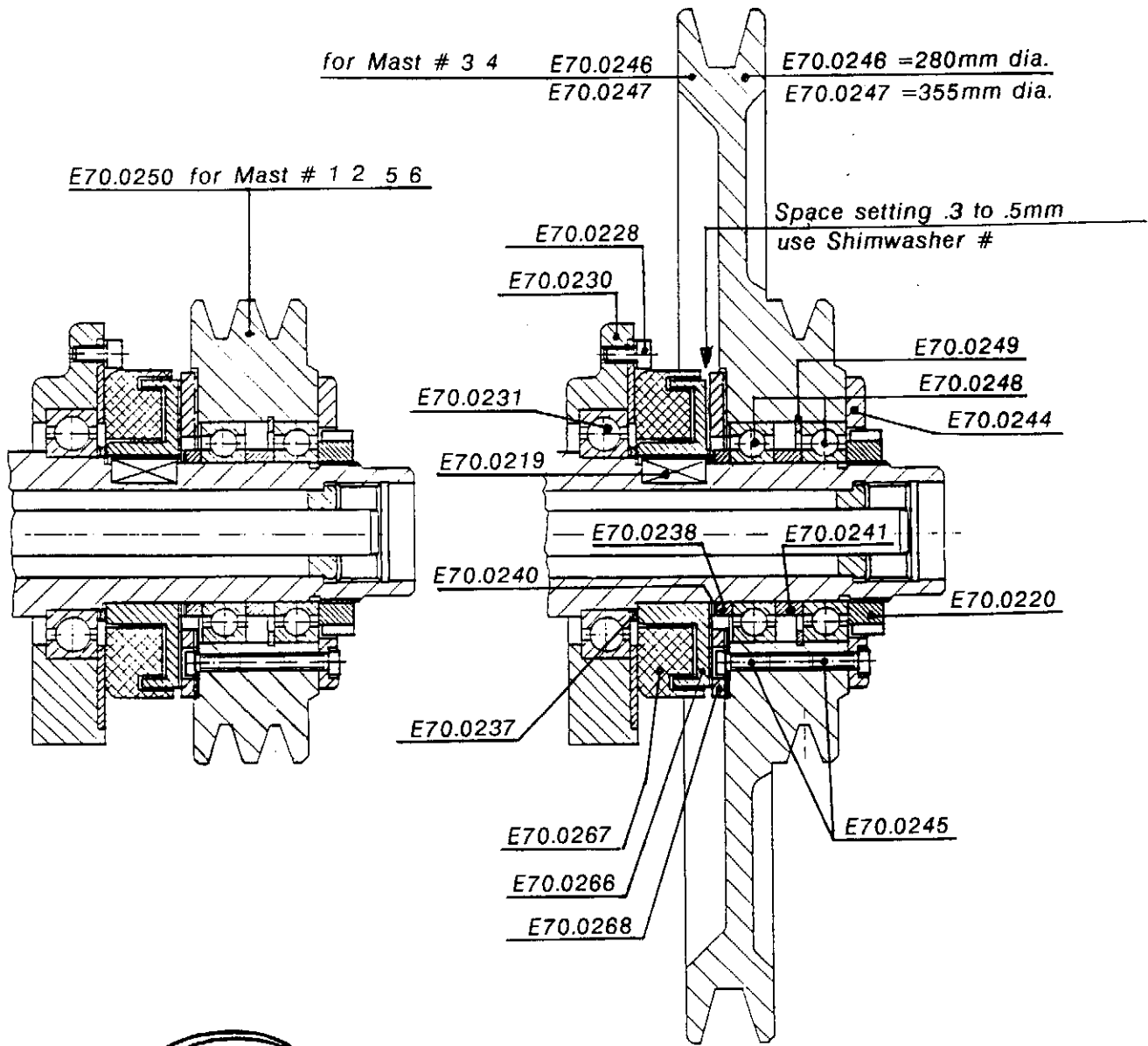
Distance from center-to-center bearing

567 mm

MAIN SHAFT DRIVE Ø 80
ANTRIEB / HAUPTWELLE Ø 80

| <u>Order No.</u> | <u>Designation</u> | <u>Benennung</u> |
|------------------|---|--|
| 201 | Main Shaft Drive, Complete Ø 80 mm | Hauptwellenantrieb komplett Ø 80 mm |
| 210 | Main Shaft Ø 80 | Hauptwelle Ø 80 |
| 211 | Pillow Block Bearing UCP 216 | Stehlager UCP 216 |
| 211 A | Grease Nipple | Kugel-Schmiernippel |
| 212 | Inner Ring 25x30x30 | Innenring 25x30x30 |
| 213 | Inner Ring 55x60x35 | Innenring 55x60x35 |
| 413 | Needle Bearing NK 60/35 (for# 213) | |
| 214 | Retainer Ring 30x1.5 | Sicherungsring 30x1,5 |
| 217 | Key 8x7x36 | Passfeder 8x7x36 |
| 218 | Key 10x8x40 | Passfeder 10x8x40 |
| 221 | Pillow Block Bearing UKP 213 with Tension Sleeve H 2313 (E70.0264) | Stehlagereinheit UKP 213 mit H 2313 Spannhuelse |
| 223 | Grooved Ball Bearing 6014 | Rillenkugellager 6014 |
| 224 | Roller Bearing NU 1014 | Zylinder Rollenlager NU 1014 |
| 225 | Worm | Schnecke |
| 226 | Retainer Ring WR 70 | Sicherungsring WR 70 |
| 227 | Flange | Flansch |
| 236 | Radial Seal 80x100x10 | Radial Dichtung 80x100x10 |
| 239 | Base Plate | Unterlage |
| 251 | Spacer Ring Ø 76x30 | Distanzring Ø 76x30 |
| 252 | Ring Ø 80x7 | Ring Ø 80x7 |
| 253 | Hex. Bolt M16x60 | 6kt.-Schraube M16x60 |
| 254 | Washer B17 | Scheibe B17 |
| 255 | Lock Washer A16 | Federring A16 |
| 256 | Hex. Nut M16 | 6kt.-Mutter M16 |
| 257 | Washer Ø 36x4 | Scheibe 36x4 |
| 264 | Tension sleeve H2313 | Spannhuelse H2313 |
| 258 | Ball Set Screw for No. 206+211 | Kugeldruckschraube fuer Nr. 206+211 |

Main Shaft Drive 60/70/80/ Antrieb der Hauptwellen 60/70/80



MAIN SHAFT DRIVE \varnothing 60/70/80
 ANTRIEB DER HAUPTWELLEN \varnothing 60/70/80

| <u>Order No.</u> | <u>Designation</u> | <u>Benennung</u> |
|------------------|--|---|
| 219 | Key 14x9x24 | Passfeder 14x9x24 |
| 220 | Slotted Nut M50x1.5 | Nutmutter M50x1,5 |
| 228 | Socket-Head Screw M6x12 | Zylinderschraube M6x12 |
| 230 | Holder | Haltering |
| 231 | Grooved Ball Bearings 6011 | Rillenkugellager 6011 |
| 265 | Clutch MFT 5, compl. with Thermo Switch | Scheibenkupplung MFT 5 mit Thermoschalter |
| 266 | Clutch Anchor for JFT 5 | Kupplungsrotor fuer JFT 5 |
| 267 | Clutch Coil for MFT 5 | Spulenkoerper fuer MFT 5 |
| 268 | Clutch Washer for MFT 5 | Mitnehmerscheibe fuer MFT 5 |
| 237 | Washer \varnothing 63x3 | Abstandscheibe \varnothing 63x3 |
| 238 | Bushing 50x6 | Abstandbuchse 50x6 |
| 240 | <i>E70.0240 Shimwasher Set 50x62x.3/.5</i> | Passscheibe 50x62x0,5 |
| 241 | Bushing \varnothing 60x10 | Abstandbuchse \varnothing 60x10 |
| 244 | Cover | Deckel |
| 245 | Socket-Head Screw M6x16 DIN 7984 (low head) | Zylinderschraube M6x16 DIN 7984 |
| 246 | Drive Pulley \varnothing 280 (580-1740rpm) | Antriebsscheibe \varnothing 280 (580-1740 u/min) |
| 247 | Drive Pulley \varnothing 355 (460-1360rpm.) | Antriebsscheibe \varnothing 355 (460-1360u/min) |
| 248 | Grooved Ball bearing 6010 | Rillenkugellager 6010 |
| 249 | Retainer Ring 80x20.5 | Sicherungsring 80x2,5 |
| 250 | Drive Pulley for Mast 1,2,5 and 6 | Antriebsscheibe fuer Mast 1,2,5 und 6 |

Note: Thermo switch for clutch is built into No. 265, not available separately.

Anmerkung: Thermoschalter fuer Scheibenkupplung ist eingebaut in Nr. 265, nicht separat erhaeltlich.

FLYER FOR MAIN SHAFT Ø 60/70
WICKELFLUEGEL FUER HAUPTWELLE Ø 60/70

